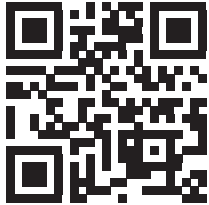




VEHICLE	KIT	CROSSBAR
Mitsubishi Outlander ZJ/ZK	DK290	SZ137
RUNNING DATES	2012 - 2020	
VEHICLE NOTES	See Page 2 for instructions	

VISIT THE ONLINE
CALCULATOR FOR CURRENT
SYSTEM LOAD LIMIT DATA



DYNAMIC ROAD LOAD LIMIT (NOTE: DIFFERENT ON AND OFF ROAD CARGO LIMIT)
***USE THE VEHICLE MANUFACTURER'S MAXIMUM ROOF ALLOWANCE IF IT IS LOWER THAN THE FIGURE LISTED**

 LOAD LIMIT	 SYSTEM WEIGHT	 ON ROAD CARGO LIMIT	 OFF ROAD CARGO LIMIT (ON ROAD CARGO LIMIT / 2)
UP TO 75 kg * 165 lb	— 5 kg 11lb	= UP TO 70 kg 154 lb	OR UP TO 35 kg 77 lb

PAD AND CLAMP DETAILS

PLATE ID:
M311

PAD ID:
M473

CLAMP ID:

CLAMP ID:

CLAMP ID:

PLATE ID:
M311

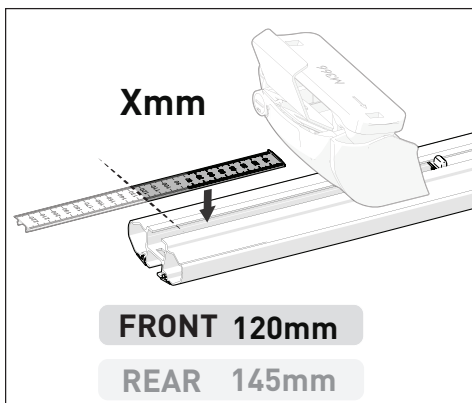
PAD ID:
M473

CLAMP ID:

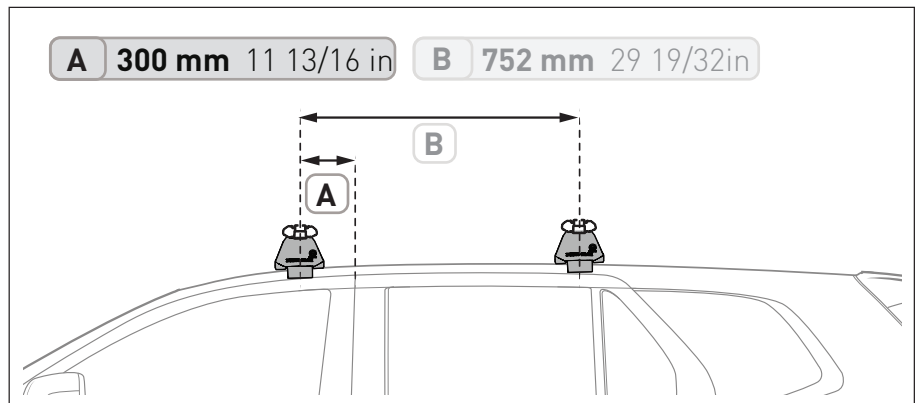
CLAMP ID:

CLAMP ID:

MEASUREMENT STRIPS



VEHICLE POSITIONING



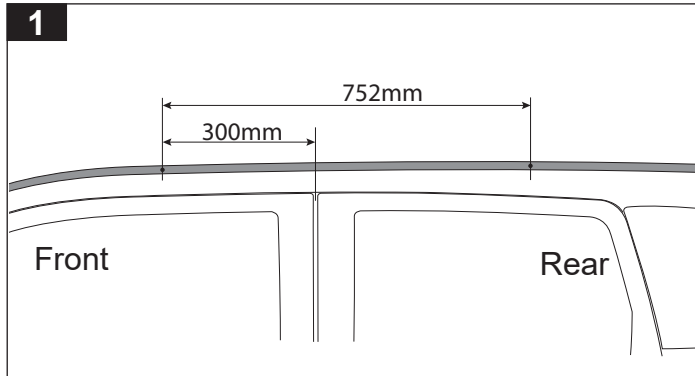
NOTES FOR DEALERS / FITTERS

It is your responsibility to ensure these fitting instructions are given to the end user or client.

Document No: R4459
Issue No: 1
Issue Date: 8-Jan-25



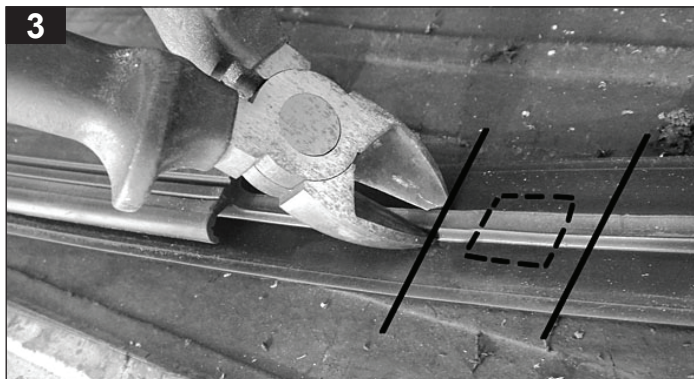
VEHICLE		KIT	CROSSBAR
Mitsubishi Outlander ZJ/ZK		DK290	SZ137
RUNNING DATES	2012 - 2020		
VEHICLE NOTES	See Page 2 for instructions		

DITCH TRIM INSTRUCTIONS

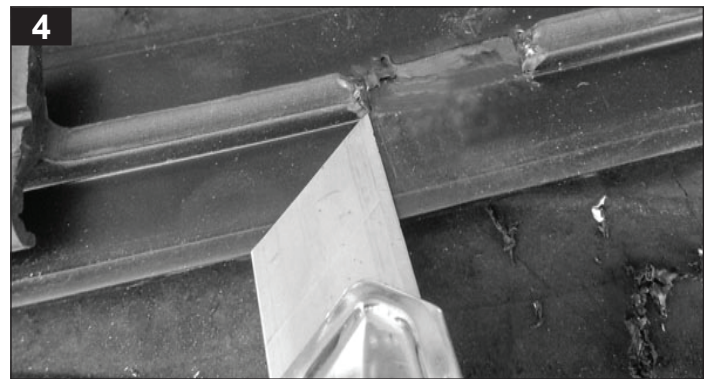
Roof ditch moulding requires holes to expose the roof rack fixing points. Mark points at measurements shown above.



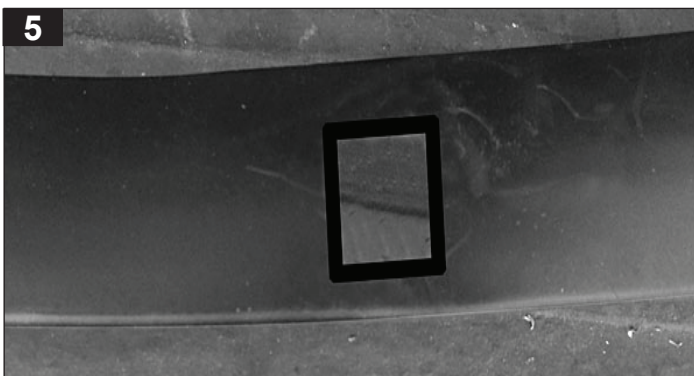
Front left hole position shown. Remove roof ditch mould.



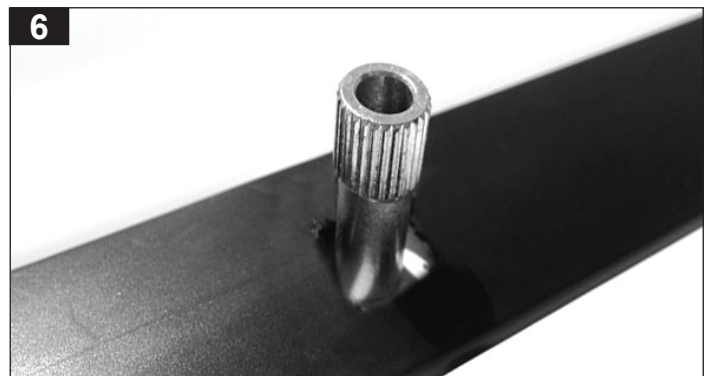
Turn roof ditch mould upside down. The underside rib has metal inside. Use side cutters to cut either side of hole position.



Trim excess rubber.



Cut hole's in each roof ditch mould approximately 12 mm square or with enough clearance to fit over the stud as shown in Step 6.



Re-install left & right roof ditch mould.
Fasten all four studs.

NOTES FOR DEALERS / FITTERS