



RHINO-RACK®

RVP86 KIA Sportage Gen4 Leg Fitting Supplement

VEHICLE LOAD LIMIT (VLL) KG/LBS	SYSTEM WEIGHT (SW) KG/LBS	ON-ROAD CARGO ALLOW. (OR)	OFF-ROAD CARGO ALLOW. (OFR)
Up to 75/165*	5/11	OR=VLL - SW	OFR = OR/1.5

***CHECK YOUR VEHICLE OWNERS HAND BOOK FOR VEHICLE MAXIMUM CARRYING CAPACITY. PLEASE ENSURE YOU USE THE VEHICLE MANUFACTURERS MAXIMUM ROOF ALLOWANCE IF IT IS LOWER THAN THE FIGURE LISTED IN THIS INSTRUCTION.**

PARTS/TOOLS REQUIRED:

T1 - 10mm Spanner/Socket Wrench

T2 - Marker

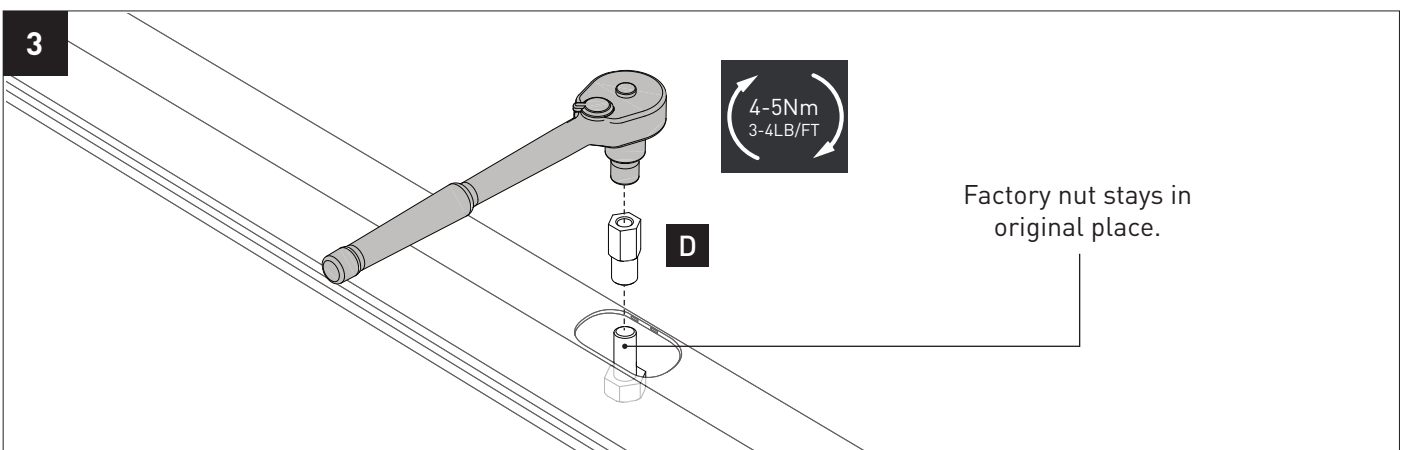
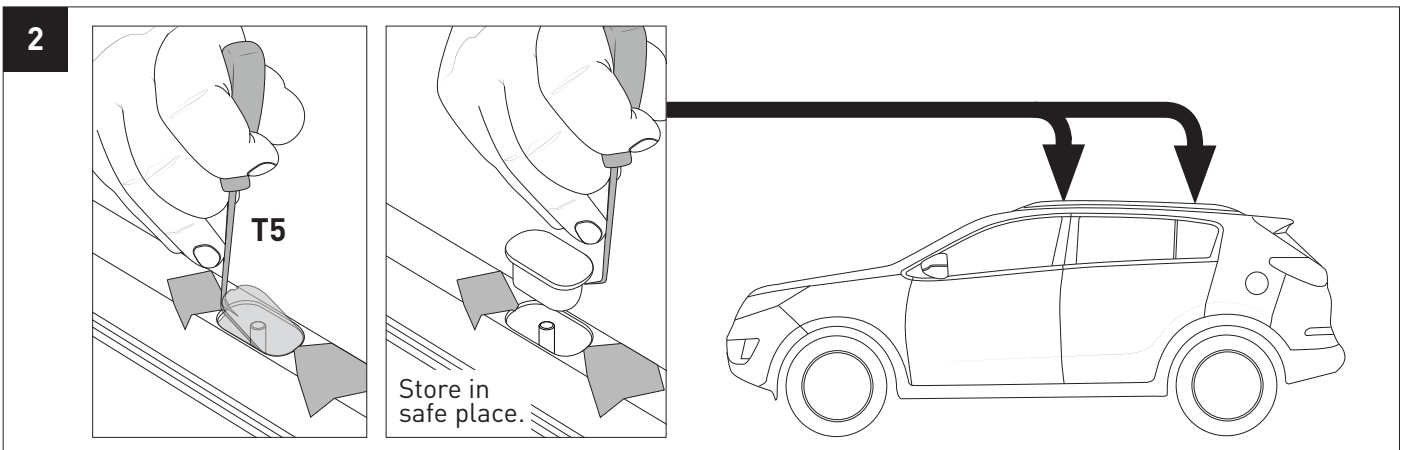
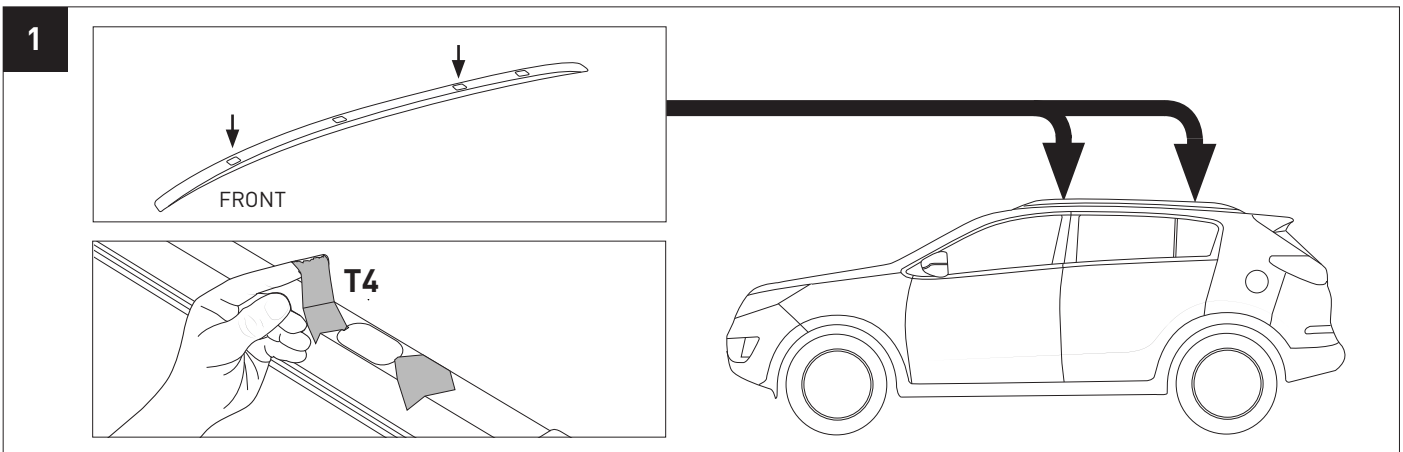
T3 - Saw (flush bar only - if converting overhang bars)

T4 - Masking Tape

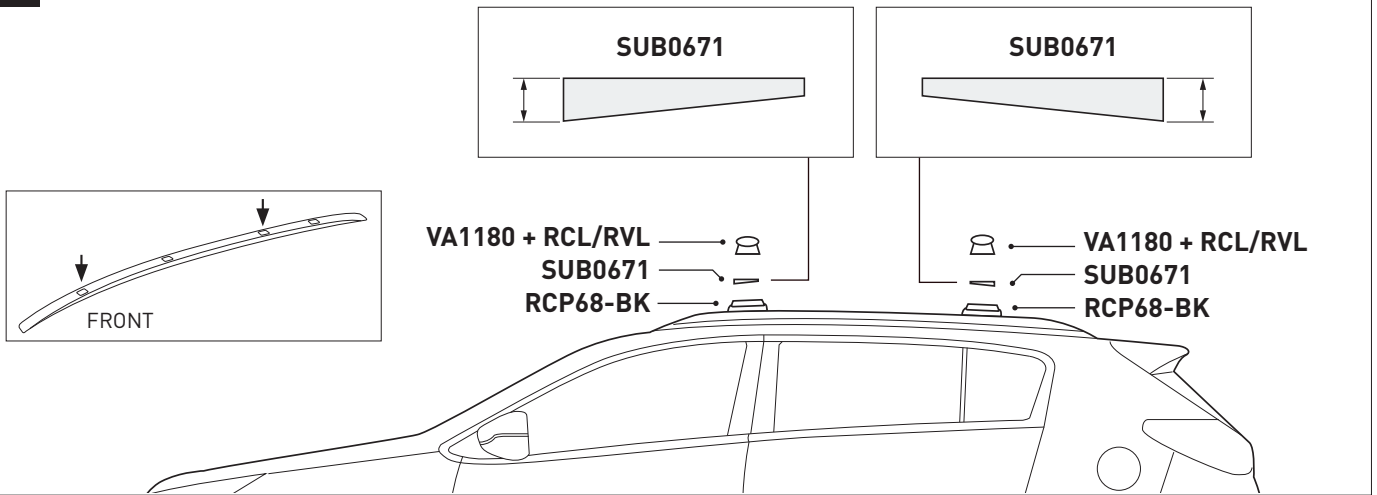
T5 - 2mm Right Angle Pick

REFER TO RCP68-BK INSTRUCTION FOR BASE KIT PARTS & HARDWARE

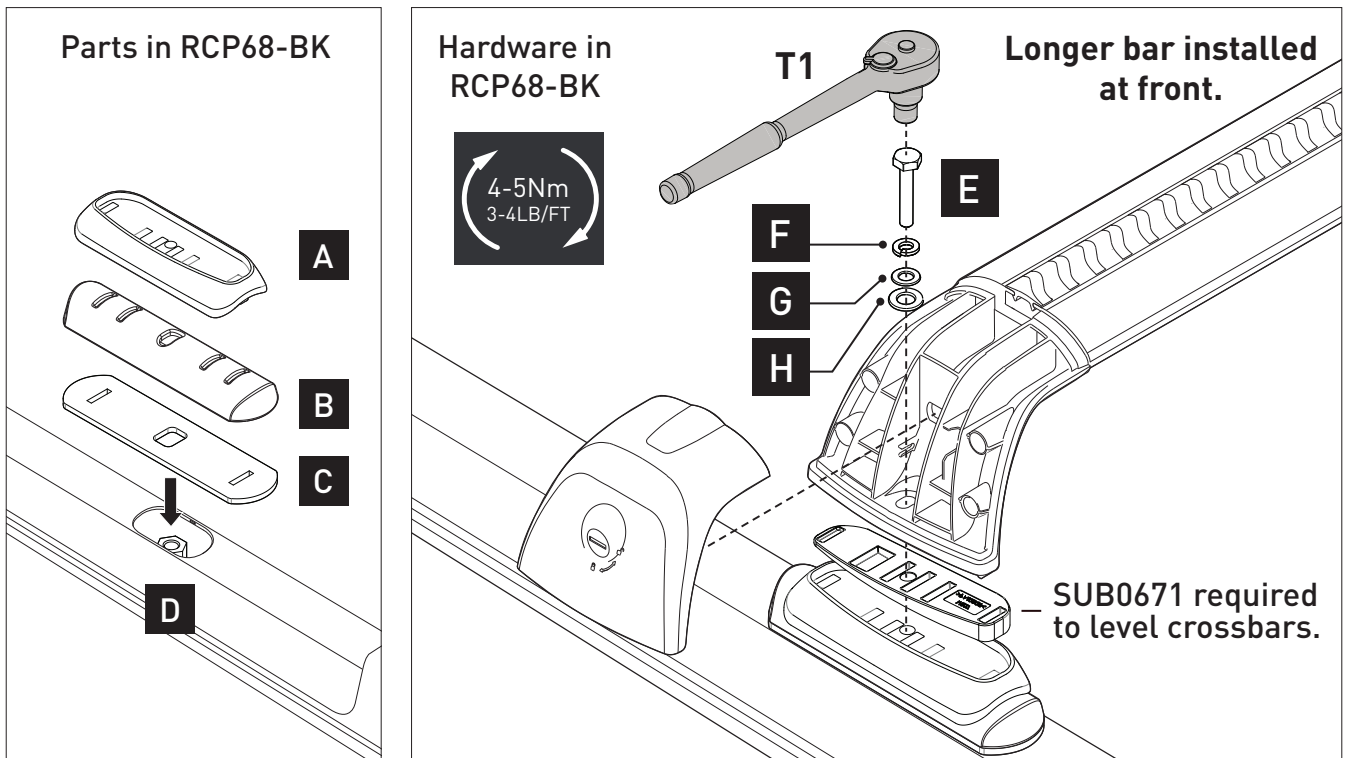
A B C D E F G H I



4

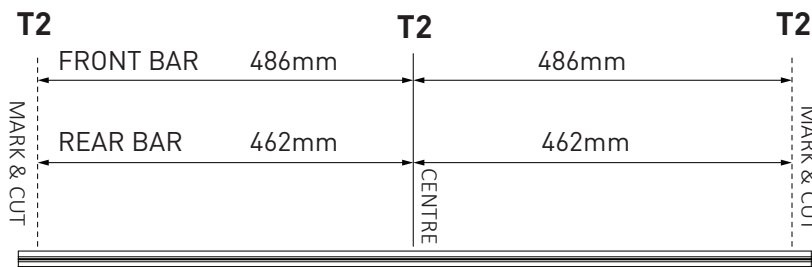


5 FOR FLUSH BAR

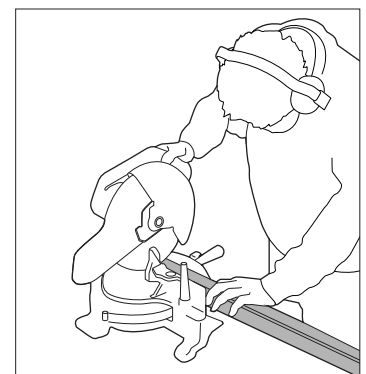


Note: Overhang crossbars can be cut to length to make flush bars fit this vehicle.

1. Mark the centre of the Front and Rear Overhang Vortex Bar
2. Measure from the centre of the front & rear bar out to the below desired lengths and mark on both ends
3. Carefully cut the bar at these markings using a Saw with an Alloy Cutting Blade.



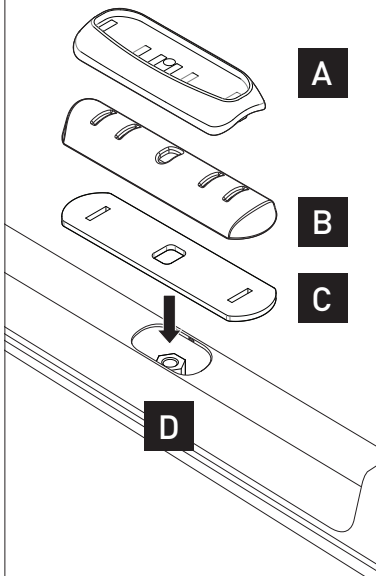
T3 to cut



Note for dealers when altering RSP kits:
 Add 38mm to sports bar measurement for RVL.
 Add 40mm to sports bar measurement for RVH.

6 FOR OVERHANG CROSS BAR

Parts in RCP68-BK



Hardware in RCP68-BK

