



# RHINO-RACK

CONTROLLED

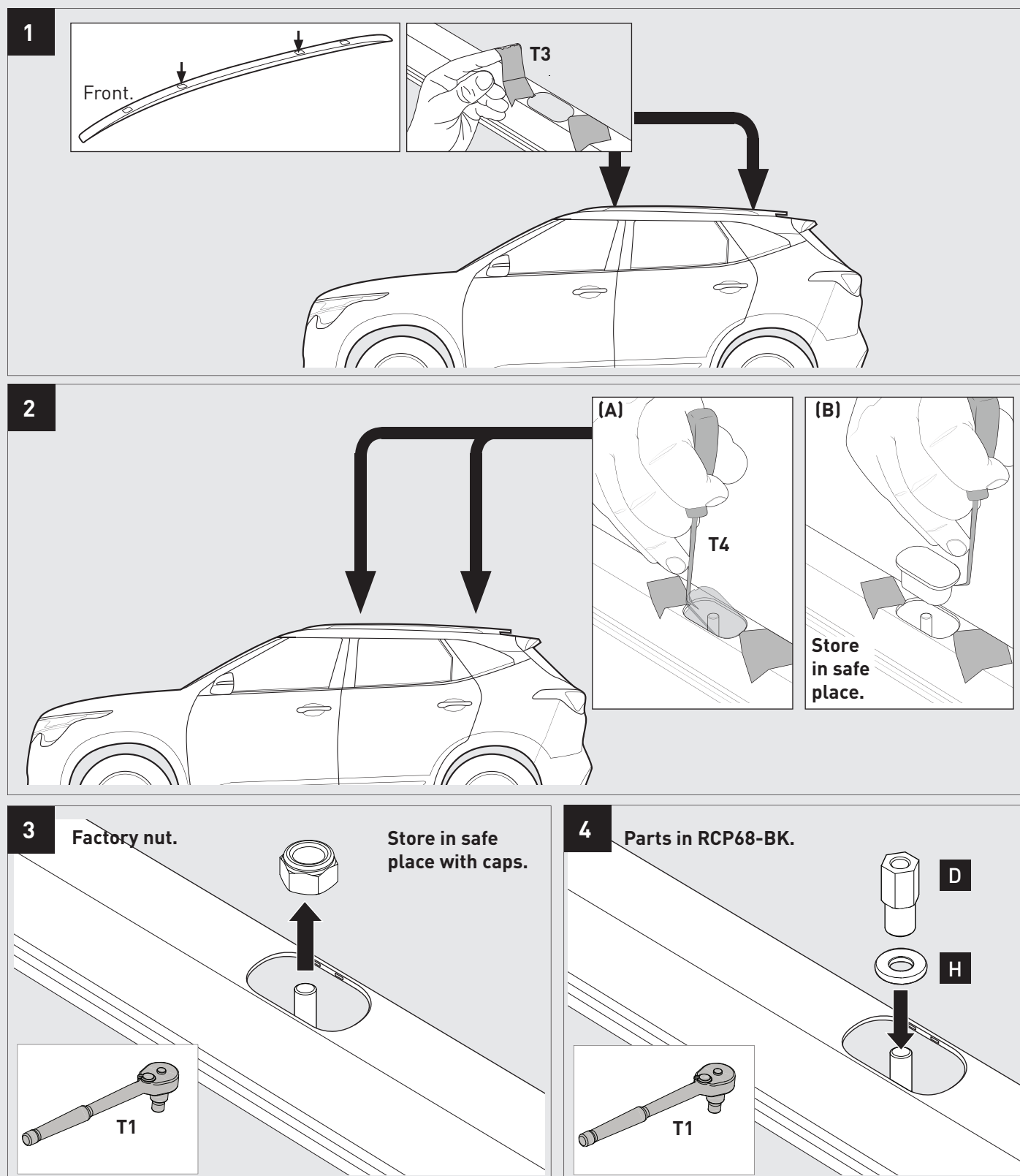
## Kia Seltos Gen 1 Base kit and leg fitting supplement.

VEHICLE LOAD LIMIT (VLL) KG/LBS	SYSTEM WEIGHT (SW) KG/LBS	ON-ROAD CARGO ALLOW. (OR)	OFF-ROAD CARGO ALLOW. (OFR)
Up to 70/154*	5/11	OR=VLL - SW	OFR = OR/1.5

**\*CHECK YOUR VEHICLE OWNERS HAND BOOK FOR VEHICLE MAXIMUM CARRYING CAPACITY. PLEASE ENSURE YOU USE THE VEHICLE MANUFACTURERS MAXIMUM ROOF ALLOWANCE IF IT IS LOWER THAN THE FIGURE LISTED IN THIS INSTRUCTION.**

### TOOLS REQUIRED:

REFER RCP68-BK INSTRUCTION FOR BASE KIT COMPONENTS AND INSTALLATION TOOLS REQUIRED.



5

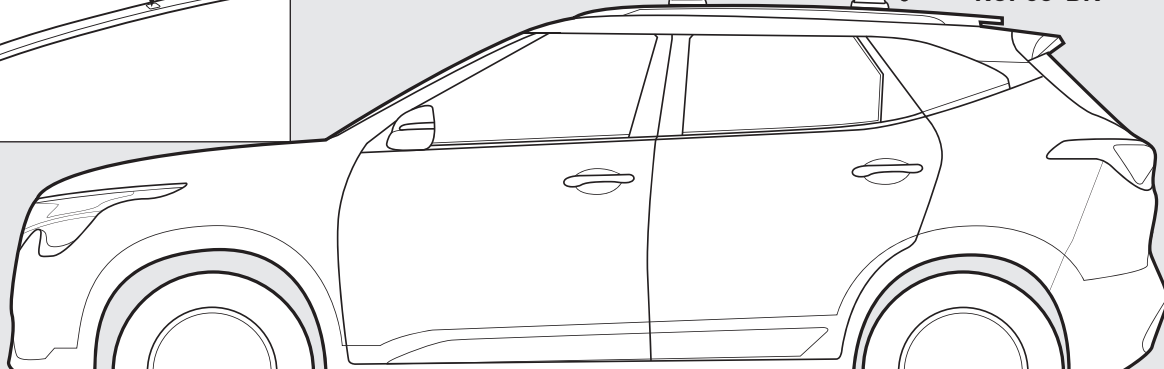
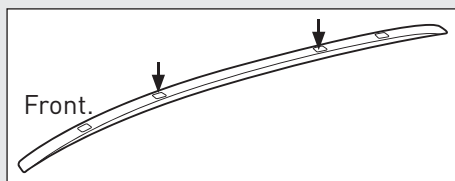
VA1180 + RCL/RVL —●—

—●— VA1180 + RCL/RVL

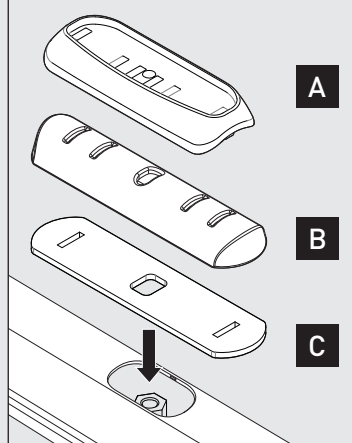
RCP68-BK

RCP68-BK

Front.



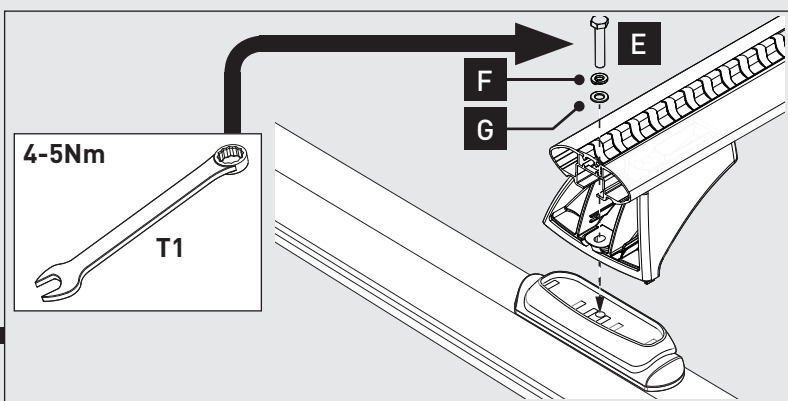
Parts in RCP68-BK



OR

4-5Nm

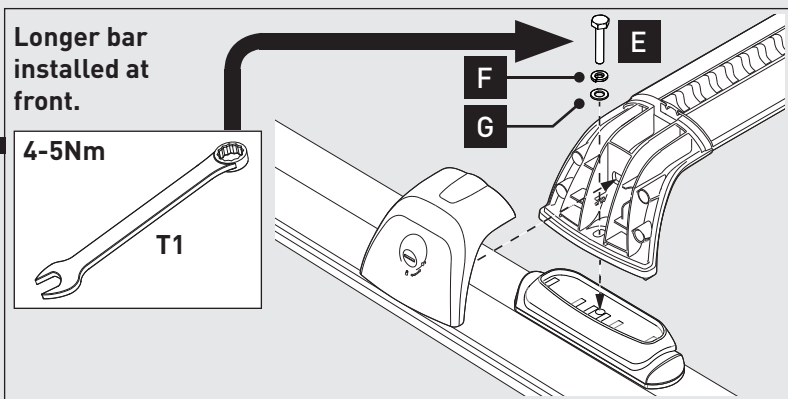
T1



Longer bar  
installed at  
front.

4-5Nm

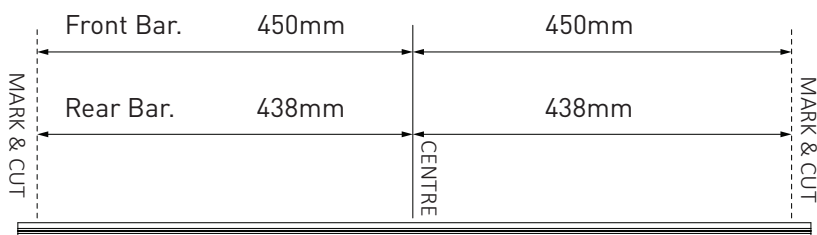
T1



## NOTES FOR DEALERS/FITTERS

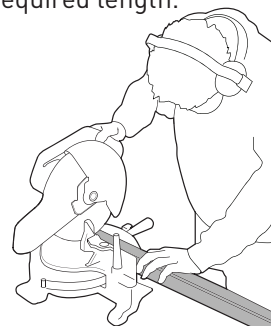
It is your responsibility to ensure these instructions are given to the end user or client.

Vortex crossbars can be cut to length to fit this vehicle. Measure the desired length out from the centre of the Vortex Bar and create a reference with a marker. Carefully cut the bar at these markings using a Saw with an Alloy Cutting Blade.



Note for dealers when altering a RSP kits:  
Add 38mm to sports bar measurement for RVL.  
Add 40mm to sports bar measurement for RVH.

Cut the Bar at the  
required length.



Document No: R2564  
Issue No: 01  
Issue Date: 10/07/20

These instructions remain the property of Rhino-Rack Pty Ltd and may not be used or changed for any purpose other than intended.