



RHINO-RACK

Aerodynamic & Heavy Duty Roof Rack Systems

Toyota Hilux - Rhino Sports Two Bar Track Mount System

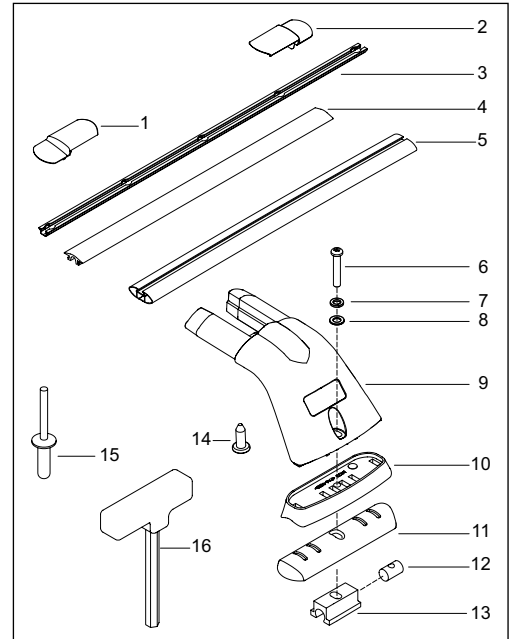
Place these instructions in the vehicle's glove box after installation is complete.

Important: Please read these instructions carefully prior to installation. Please refer to your fitting instruction to ensure that the roof racks are installed in the correct locations. Check the contents of kit before commencing fitment and report any discrepancies

Parts List

Maximum carrying capacity: 100kg

Item	Component Name	Single Cab	Extra Cab	Dual Cab	Part No.
1	Track Mount End Cap FL & RR	2	2	2	M215
2	Track Mount End Cap FR & RL	2	2	2	M214
3	Hilux Track	1 Pair	1 Pair	1 Pair	
4	Rhino Sportz Rubber Buffer Strip	1	2	2	R011
5	Rhino Sportz Crossbar	1	2	2	A155
6	M6 x 35mm Security Screw	2	4	4	B092
7	M6 Spring Washer	2	4	4	W004
8	M6 x 12.5mm Flat Washer	2	4	4	W003
9	RSP Sportz Leg	2	4	4	M094
10	RSP Top Pad	2	4	4	M173
11	RSP Bottom Pad	2	4	4	M172
12	M6 x 16 Dowel Nut	2	4	4	N027
13	M6 Dowel Nut Housing	2	4	4	A341
14	10G x 1/2" Pan Head Phillips Screw	2	4	4	B045
15	Rivet	7	9	11	H005
16	5mm Security Allen Key	1	1	1	Seckey-S
17	Fitting Instruction	1	1	1	RS-82



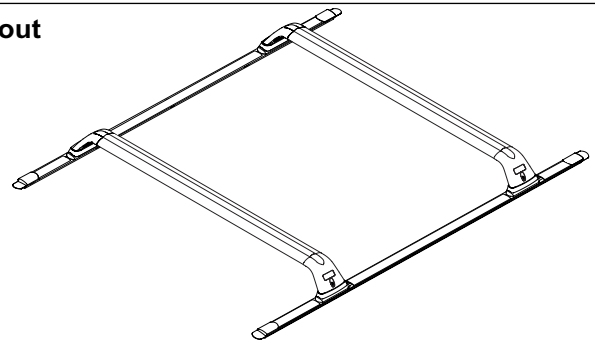
Tools Required:

Pneumatic or concertina rivet gun. 5mm Security Allen key, provided in kit.
 Marking pen. Measuring tape.
 Power or Cordless drill. Flat Head screwdriver.
 5mm drill bit. Phillips Head screwdriver.
 Drill bit depth stop. Rubber mallet.
 Vacuum cleaner.
 Cold galvanizing solution & brush.
 Selleys Butyl Mastic, Caulking Gun.

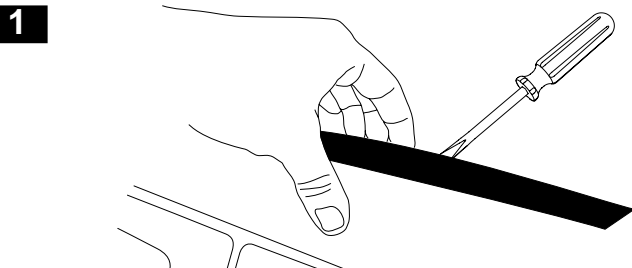
Care Instruction:

Clean vehicle roof prior to fitting Rhino Heavy Duty Racks.

Layout

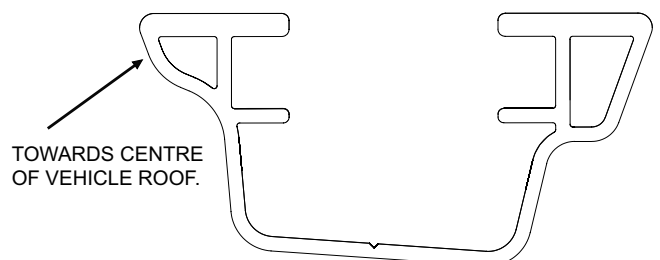


Gently lever the rubber roof trim starting with a screwdriver (wrap tape around end of screwdriver to prevent paint scratching) then using fingertips pull carefully upwards. Small plastic clips are attached to the roof underneath each end of the strip.



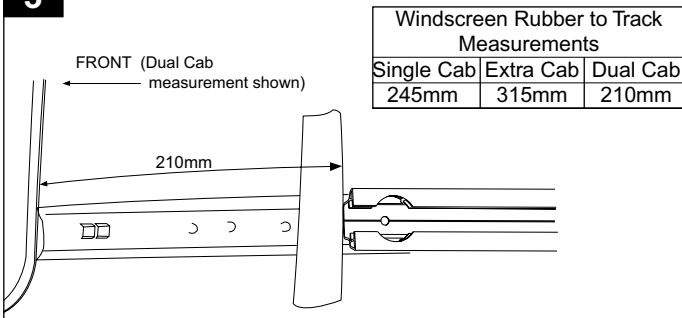
Take note of track orientation when placing in the roof channel. Both tracks are the same.

2



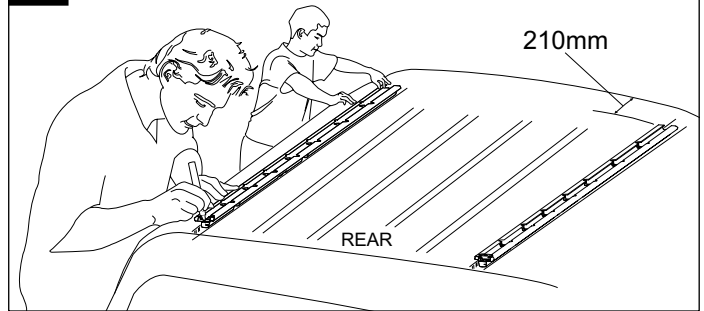
Place the track in the channel and measure from the edge of the windscreen rubber to the front of the track. The use of masking tape will help maintain this measurement while marking out holes for drilling.

3



Hold track down tight in roof channel. Mark all holes using a marking pen. Remove the track.

4



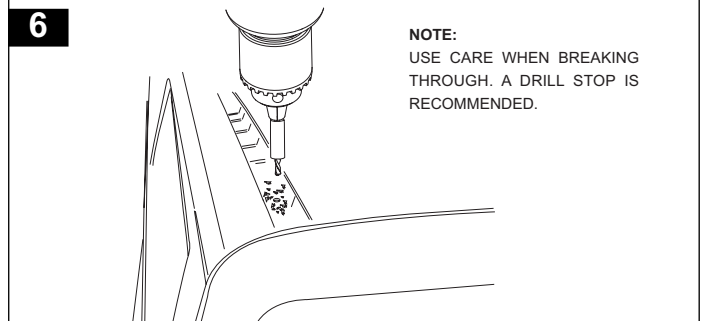
Accurately centre punch all holes before drilling.

5



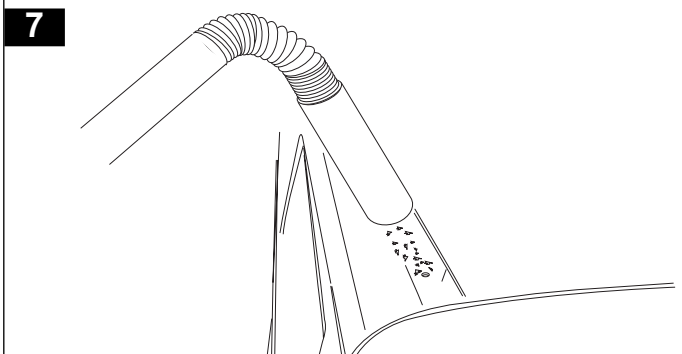
Marked out holes can now be drilled through using a 5mm drill bit and drill stop. Set the drill stop to ensure you don't drill through the roof lining. Use of a drill stop will alleviate the need to remove the hood lining.

6



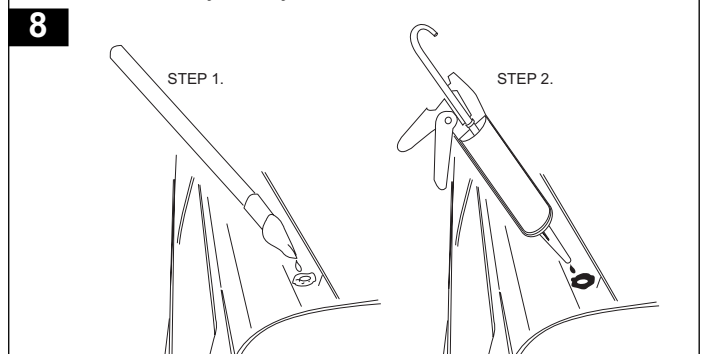
Use a vacuum to remove swarf from the roof channel.

7



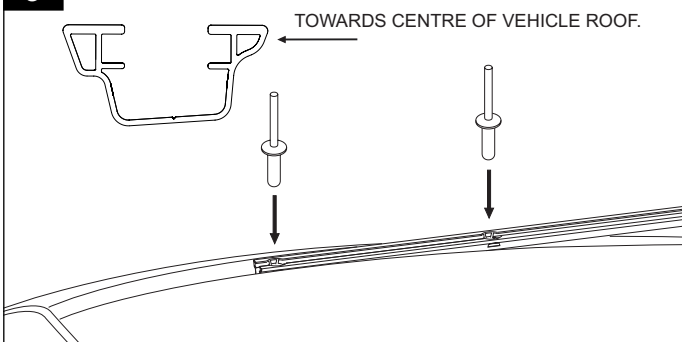
Apply a liberal amount of cold galvanizing solution to the inside and surrounds of all holes. Allow cold galvanizing solution to dry, three to four minutes, then apply a liberal amount of Selleys Butyl Mastic in and around each hole.

8



Peel the backing tape off the track. Accurately place the track over the drilled holes in the roof channel using the rivets to position. Make sure track orientation is correct.

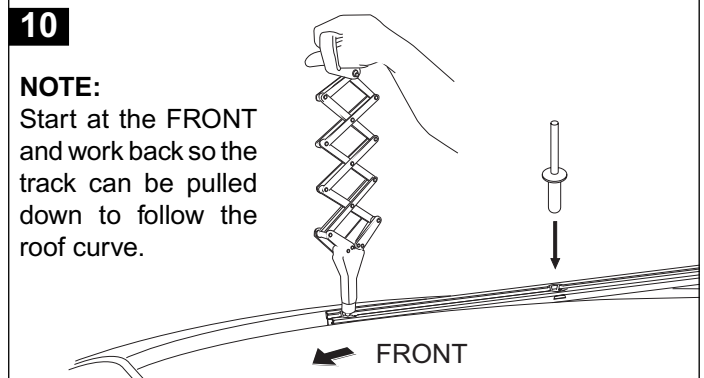
9



Using either a pneumatic or concertina type rivet gun, rivet the track into place. Make sure all rivets are seated firmly onto the base of the track.

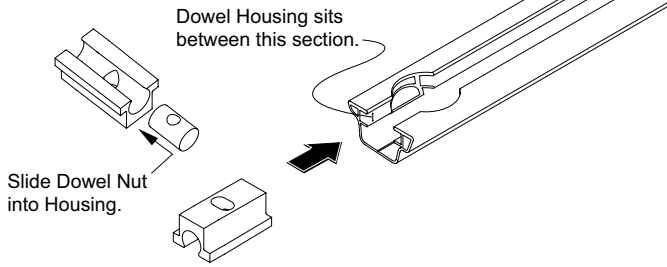
10

NOTE:
Start at the FRONT and work back so the track can be pulled down to follow the roof curve.



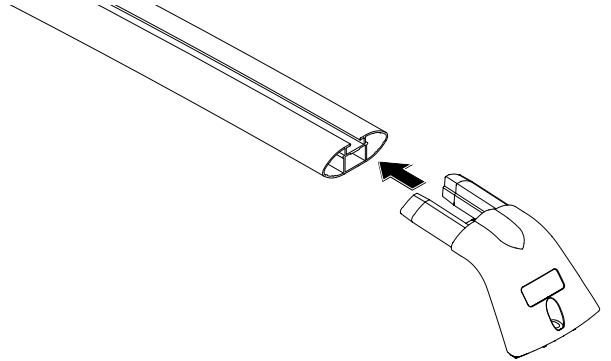
Push the Dowel Nut into the Dowel Nut Housing with the thread facing up through the hole. Slide the unit into the top 'U' section of the track.

11



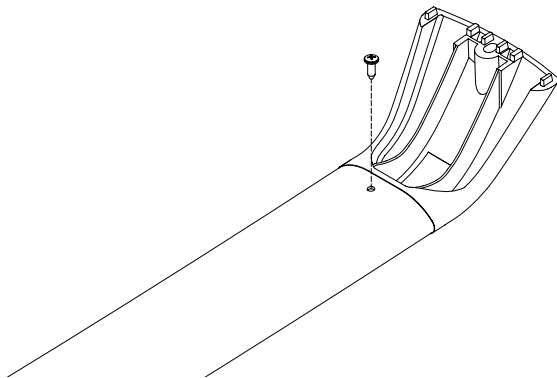
Insert the Sportz leg fully into the cross bars, a rubber mallet may be required to knock the leg in place.

12



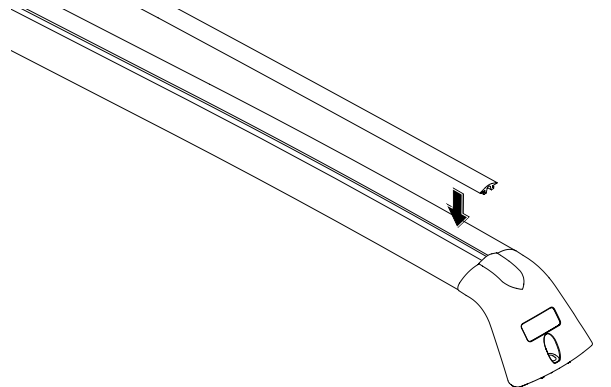
From the underside of the cross bar insert the Phillips head screw.

13



Insert the rubber buffer strip into the top of the cross bar.

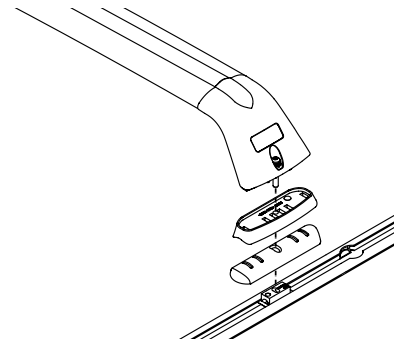
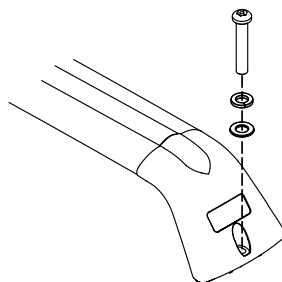
14



Place the bottom pad over the Dowel Nut Housing then Top Pad. Sit the Leg/Cross bar assembly on the Top Pad. Place the M6 Security Screw and washers through the hole in the Leg as shown and screw into the Dowel Nut. Tightening torque is 3-4Nm. Tighten after positioning both sides equally.

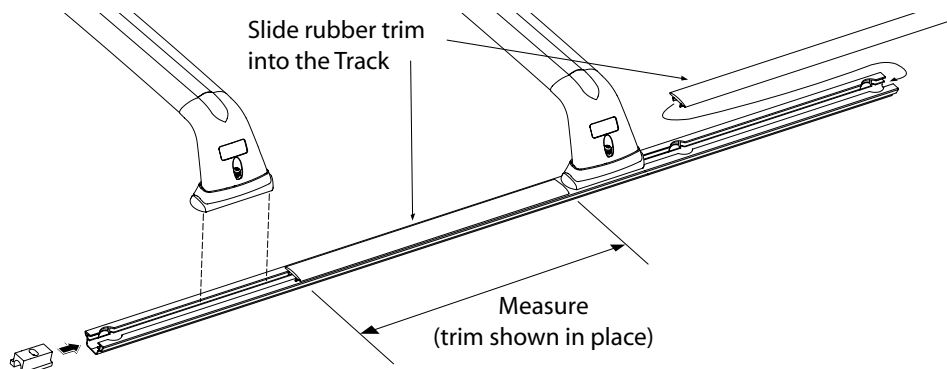
15

Tangs face towards outside of vehicle



Prior to final fitment of the second Cross bar/Leg assembly, do a trial placement and measure the distance inbetween. Cut the rubber roof trim to this measurement. Slide the rubber roof trim into the Track as shown.

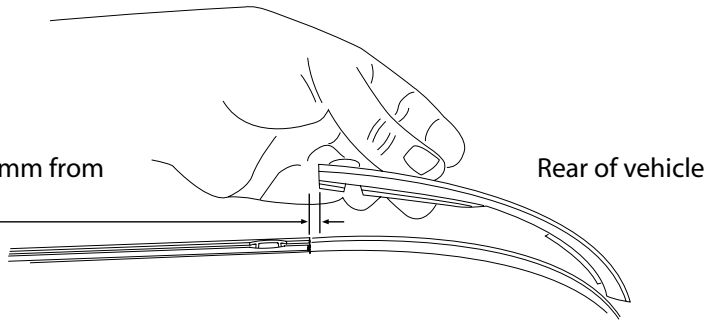
16



Measure and cut the rubber roof trim and put back in the vehicle roof channel at the front and rear ends of the Track. The front piece needs to be measured so the end of it sits under the windscreen rubber. The measurement and cutting of the rubber roof trim isn't critical since the End Cap will cover it. Recommend using a fine tooth hacksaw because of metal inside the rubber roof trim.

17

Cut trim 5-10mm from end of Track.



Showing the orientation of the End Caps after installation. Caps are LEFT and RIGHT handed..

18

FRONT VIEW

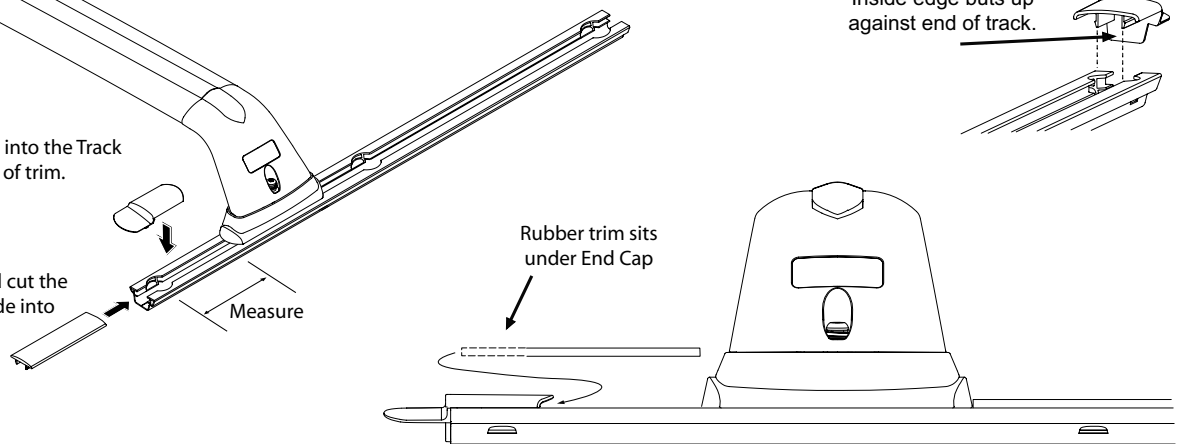


With the Leg/Crossbar units tight and fixed in place the rubber roof trim can be cut and slid in place to cover the exposed areas of the Track at each end. The End Cap is designed to sit over the rubber roof trim after it is cut. Therefore there is a generous tolerance on the measurement of the rubber roof trim.

19

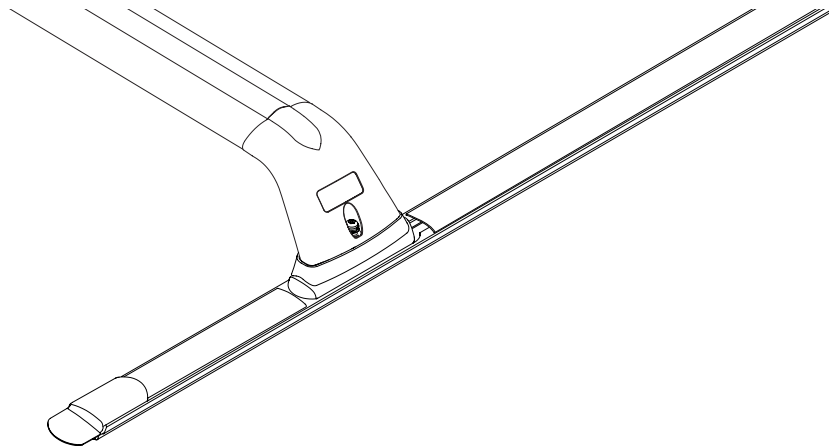
Step 2.
Clip End Cap into the Track
to cover end of trim.

Step 1.
Measure and cut the
trim then slide into
the track.



Showing the the fitted rubber roof trim in place for a neat appearance.

20



Important Information

Maximum carrying capacity: 100kg

Recommendations:

It is essential that all bolt connections be checked after driving a short distance when you first install your cross bars.

Bolt connections should be checked again at regular intervals (probably once a week is enough, depending on road conditions, usage, loads and distances travelled). You should also check the cross bars each time they are refitted.

Make sure to fasten your load securely. Please ensure that all loads are evenly distributed and that the centre of gravity is kept as low as possible.

Use only non-stretch fastening ropes or straps.

Sensitivity to cross winds, behaviour in curves and braking.

The handling characteristics of the vehicle, changes when you transport a load on the roof. For safety reasons, we recommend you exercise extreme care when transporting wind-resisting loads; special consideration must be taken into account when braking.

Please remove cross bars when putting vehicle through an automatic car wash.

Load Ratings:

Maximum permissible load is 100kg per pair of cross bars (include the weight of the cross bars, 5kg). When cross bars are to be used in off-road conditions, please build a safety factor of 1.5 into this load limit. 67kg for off road conditions. Although the roof racks are tested and approved to AS1235-2000, Australian road conditions can be much more rigorous. However, increasing the number of cross bars does not increase the vehicles maximum permissible roof loading.

Note for Dealers and Fitters.

It is your responsibility to ensure instructions are given to the end user or client.

Rhino-Rack
3 Pike Street, Rydalmere,
NSW 2116, Australia.
(Ph) (02) 9638 4744
(Fax) (02) 9638 4822

Document No: RS-82
Prepared By: Craig Jones
Authorised By: Gary England

Issue No: 03
Issue Date: 20/03/2008

These instructions remain the property of Rhino-Rack Australia Pty Ltd and may not be used or changed for any other purpose than intended.