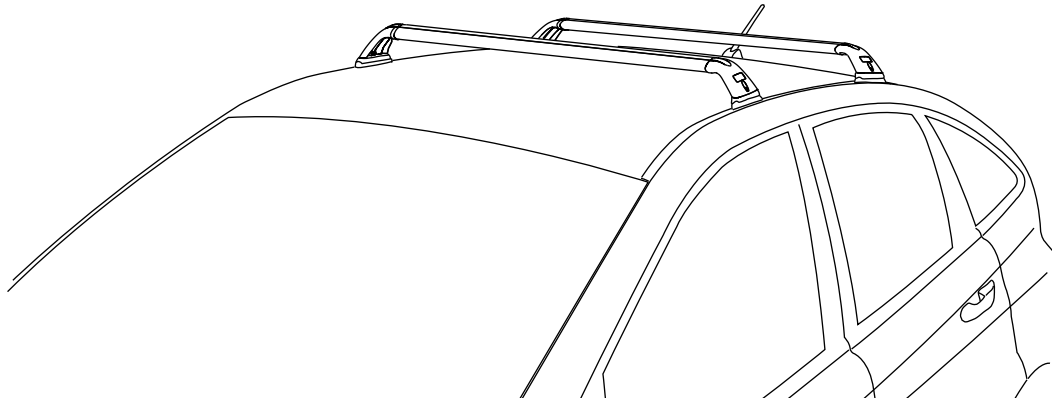




RHINO-RACK

RSPT511 SSANGYONG Actyon - Rhino Sports 2 Bar Track Mount System

Important: Please read these instructions carefully prior to installation.
Please refer to your fitting instruction to ensure that the roof racks are installed in the correct locations.
Check the contents of kit before commencing fitment and report any discrepancies.
Place these instructions in the vehicle's glove box after installation is complete.



NOTE: Assistance by a second person to fit the track extrusion is recommended.

Care Instruction: Thoroughly clean under the roof channel trim when removed prior to installation.

Important Information

Maximum carrying capacity: 60kg evenly distributed over the two crossbars.

Recommendations:

It is essential that all bolt connections be checked after driving a short distance when you first install your crossbars. Bolt connections should be checked and lubricated at regular intervals (probably once a week is enough, depending on road conditions, usage, loads and distances travelled). You should also check the crossbars each time they are re-fitted.

Make sure to fasten your load securely. Please ensure that all loads are evenly distributed and that the centre of gravity is kept as low as possible.

Use only non-stretch fastening ropes or straps.

Sensitivity to cross winds, behaviour in curves and braking.

The handling characteristics of the vehicle, changes when you transport a load on the roof. For safety reasons, we recommend you exercise extreme care when transporting wind-resisting loads; special consideration must be taken into account when braking.

Please remove crossbars when putting vehicle through an automatic car wash.

Load Ratings:

Maximum permissible load is 60kg per pair of crossbars. When crossbars are to be used in off-road conditions, please build a safety factor of 1.5 into this load limit. 40kg maximum for off-road conditions. Although the crossbars are tested and approved to AS1235-2000, off-road conditions can be much more rigorous. However, increasing the number of crossbars does not increase the vehicles maximum permissible roof loading.

Note for Dealers and Fitters:

It is your responsibility to ensure instructions are given to the end user or client.

Rhino-Rack
3 Pike Street, Rydalmere,
NSW 2116, Australia.
(Ph) (02) 9638 4744
(Fax) (02) 9638 4822

Document No: RS340
Prepared By: Craig Jones
Authorised By: Chris Murty

Issue No: 02
Issue Date: 05/07/2013

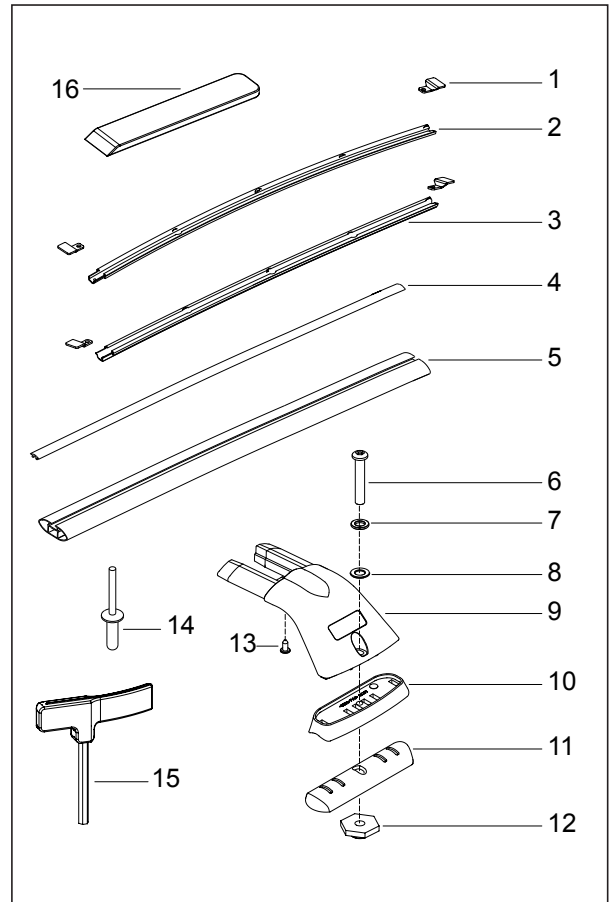
These instructions remain the property of Rhino-Rack Australia Pty. Ltd. and may not be used or changed for any other purpose than intended.



Ssangyong Actyon RSPT511

Parts List

Item	Component Name	Qty	Part No.
1	Track Mount End Cap	4	C587
2	Track Extrusion RIGHT	1	C573
3	Track Extrusion LEFT	1	
4	Sports Rubber Buffer - pair	2	R011
5	Front Crossbar 975mm	1	A155
	Rear Crossbar 954mm	1	
6	M6 x 40mm Security Screw	4	B085
7	M6 Spring Washer	4	W004
8	M6 x 12.5mm Flat Washer	4	W003
9	RSP Leg	4	M094
10	Top Pad	4	M173
11	Bottom Pad	4	M172
12	M6 Brass Hex Spigot Nut	4	N042K
13	10G x 1/2" Pan Head Phillips Screw	4	B045
14	5mm Rivet	10	H004
15	5mm Security Torque Key	1	TORKEY-S
16	Plastic Scraper	1	C590
17	Fitting Instruction	1	RS340



Tools Required:

Pneumatic or Concertina rivet gun.

Marking pen.

Power or Cordless drill.

5mm drill with drill depth stop.

Vacuum cleaner.

Cold galvanizing solution & brush.

Stanley Knife.

Silicon Remover.

3mm drill bit.

Silastic Sealer/Butyl Mastic.

5mm Security Torque key, provided in kit

Measuring tape.

Philips head screwdriver.

Side Cutters.

Scraper, provided in kit.

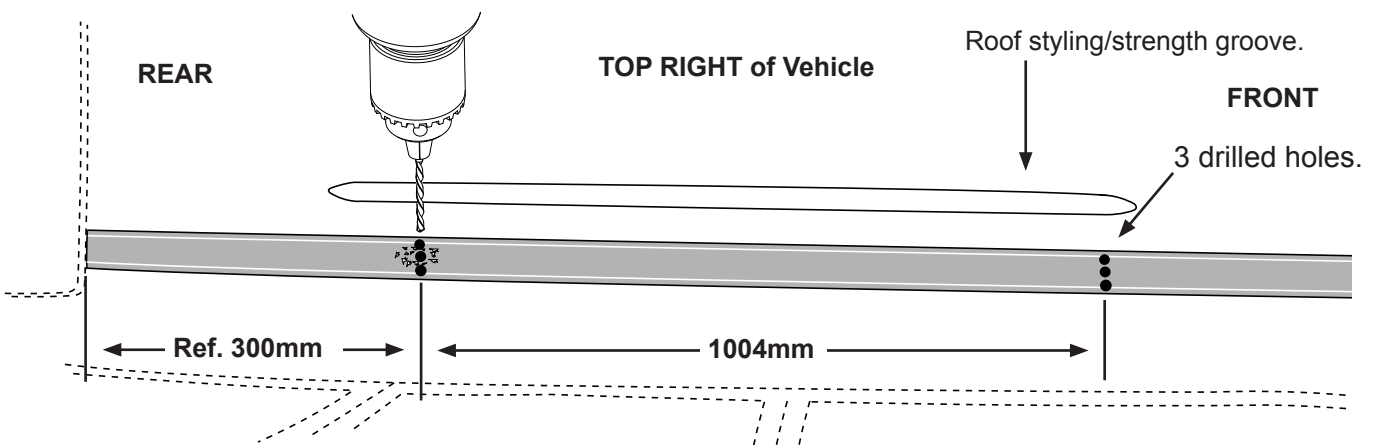
Rubber Mallet.



Drill depth stop.

Round piece of wood or plastic of larger outer diameter than the hole being drilled.
5-6mm hole through centre.

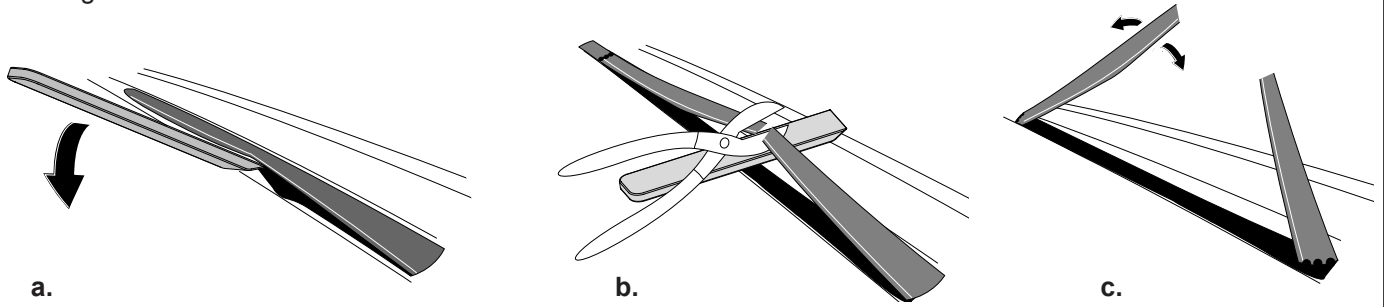
1 Measure a distance of 300mm from the Rear of the trim. Drill 3 holes of diameter 3mm. Measure a further 1004mm and drill 3 holes of diameter 3mm through the black trim on the roof, it has a steel backing. There is also a rubber strip under the trim **Do not drill into the roof.** This will allow you to remove the rubber and this section of the roof trim.



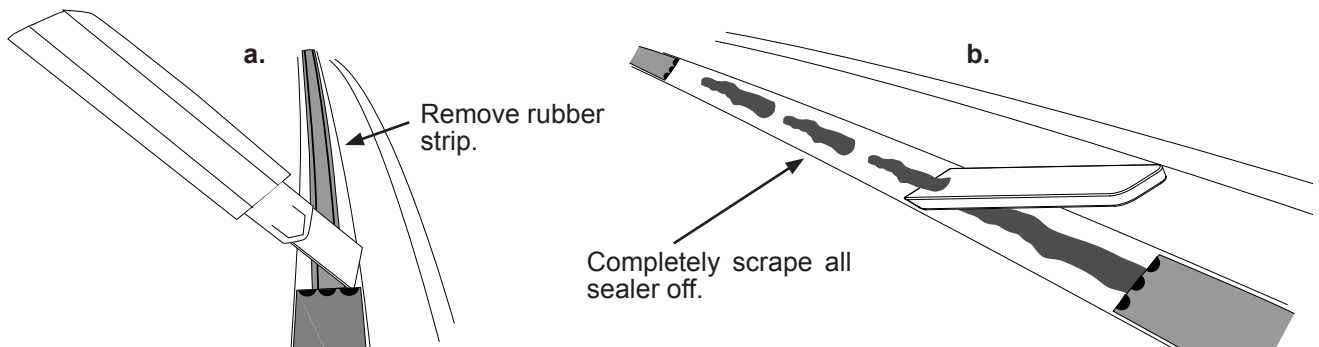


Ssangyong Actyon RSPT511

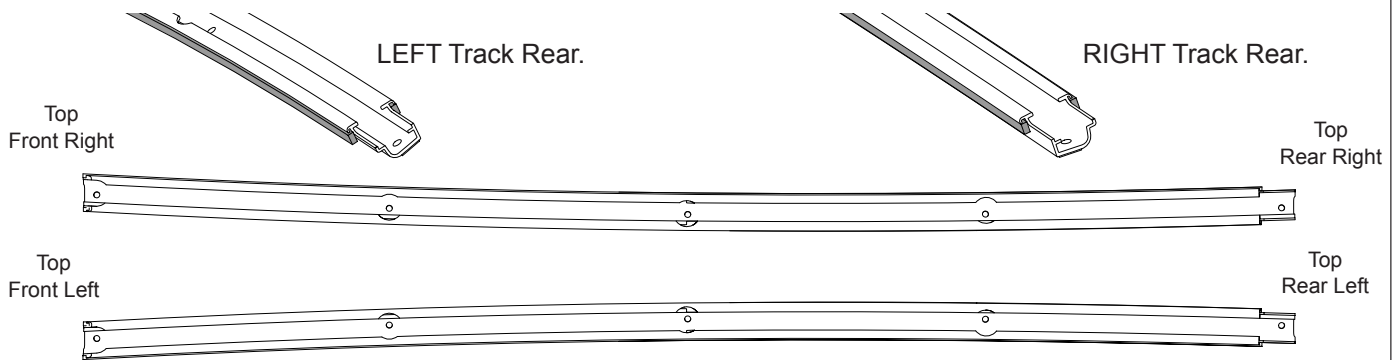
2 a. Use the plastic scraper to lever up the trim. b. Slide the scraper between the trim and roof to support trim. Use secateurs or side cutters to cut the trim. c. Support the roof trim by pushing down behind the drilled holes while bending the trim back and forth to break at the drilled holes.



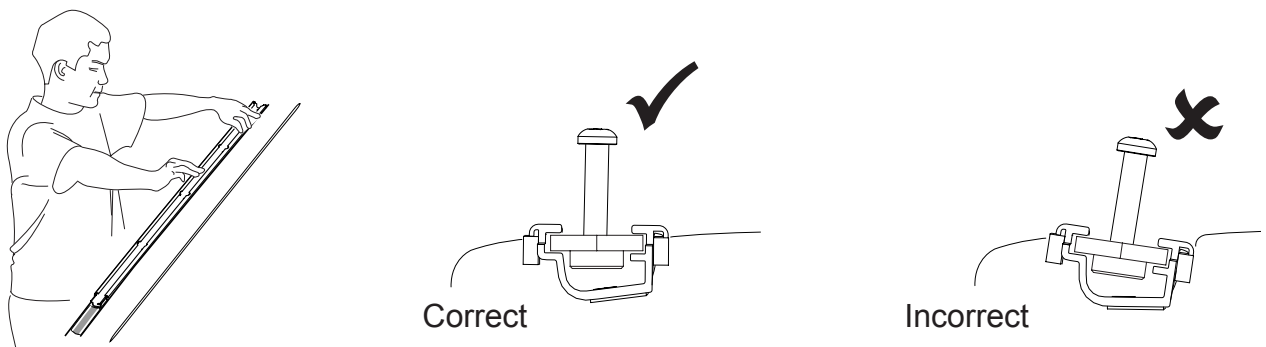
3 a. Use a knife to cut the rubber strip level with the edges of the remaining roof trim. The rubber is stuck on, pull this out of the roof channel. b. **The black sealer left behind must be fully scraped off before the tracks can be installed.** Use the supplied scraper and a Silicon remover to soften the sealer so it can be more easily scraped off.



4 Track extrusions are **LEFT** (*passenger side*) and **RIGHT** (*driver side*) handed.



5 a. Locate track in roof channel. Fasten a brass hex spigot nut and screw together. Slide screw and spigot nut in from the slot at rear of track. Slide along the track extrusion to check the angle. Look end on to make sure the track is sitting properly in the roof channel. The screw should be close to vertical when the track is in the correct position.



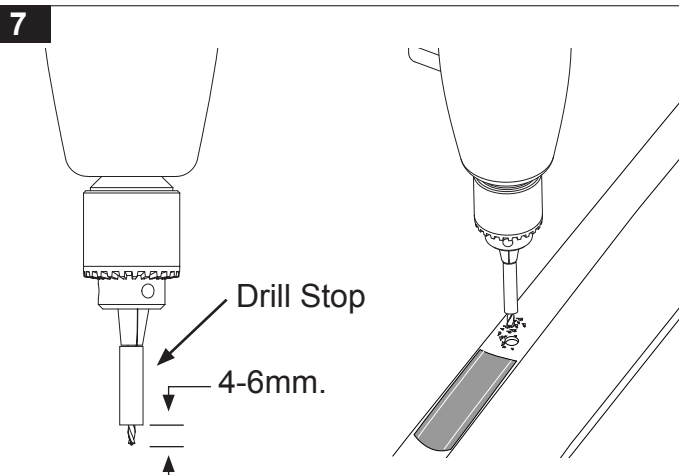
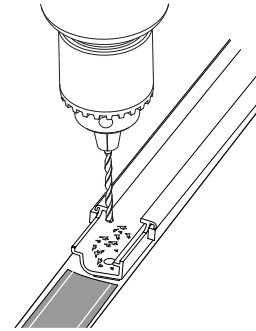


Ssangyong Actyon RSPT511

6 Assistance by a second person is recommended to hold the track in place while the holes are marked out. Use a 5mm drill bit to spot drill through the track onto the roof channel. Start at the rear and work forward while maintaining track to spot mark alignment.

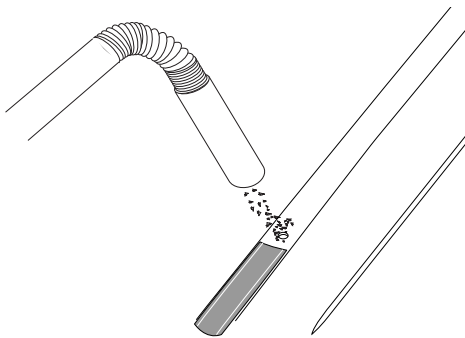


Have an assistant hold track firmly in position while you spot drill.

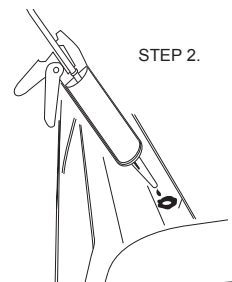
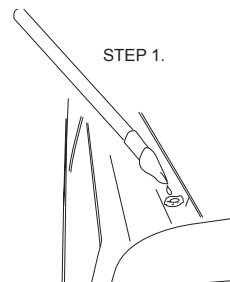


Remove the track. Marked holes can now be drilled through using a 5mm drill bit. **A DRILL STOP MUST BE USED** to avoid penetrating the inside hood lining.

8 Swarf must be vacuumed from roof to avoid rust spots and scratching.

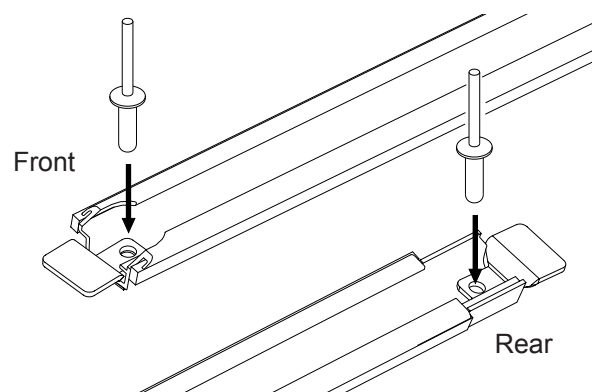
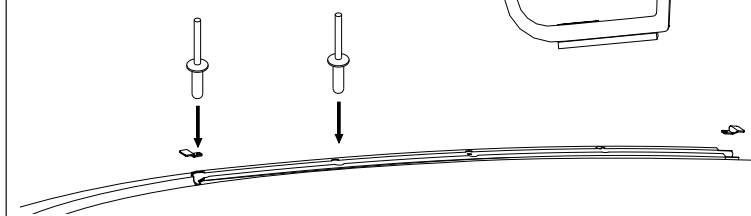


9 Apply cold galvanizing solution to the inside and surrounds of all holes. Allow to dry, few minutes, then apply a liberal amount of Selleys Butyl Mastic in and around each hole.



10 Peel the white backing tape off the track extrusion. Accurately place the track over the drilled holes in the roof channel using the rivets to position. Make sure track orientation is correct. Place the metal end caps in the track then the rivets through to secure.

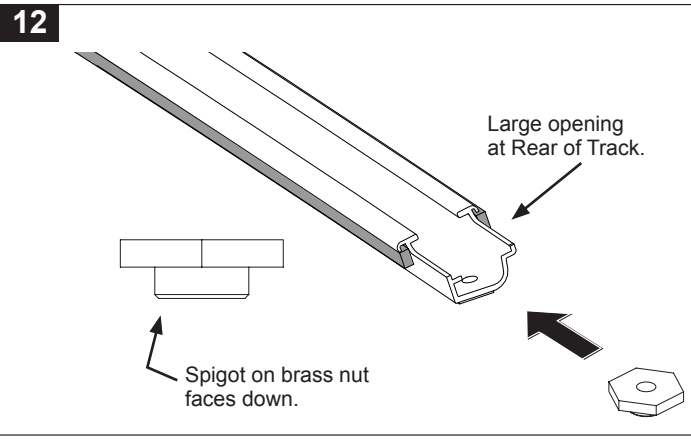
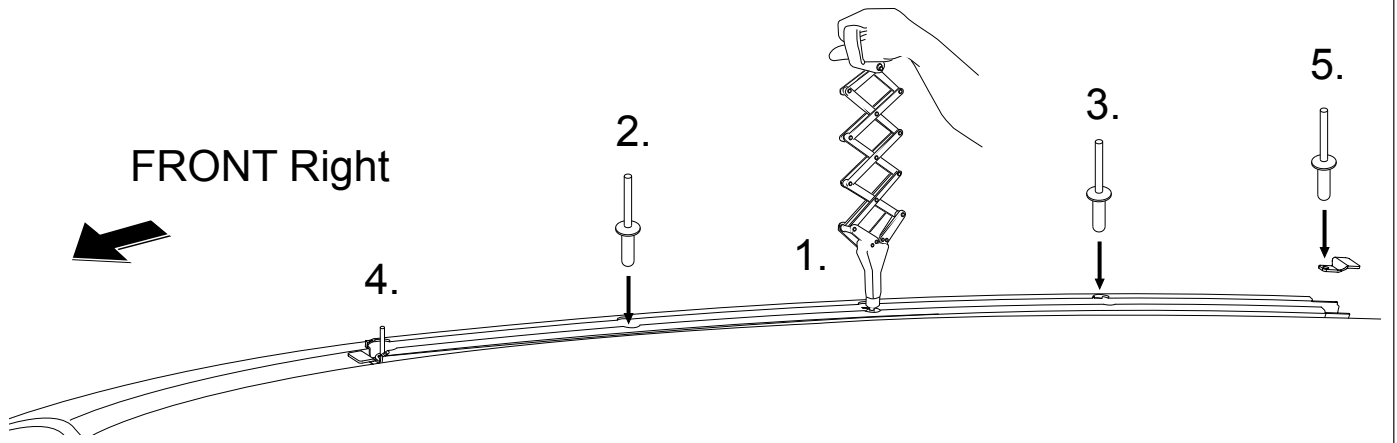
FRONT RIGHT Track.
Towards Outside of Vehicle Roof.



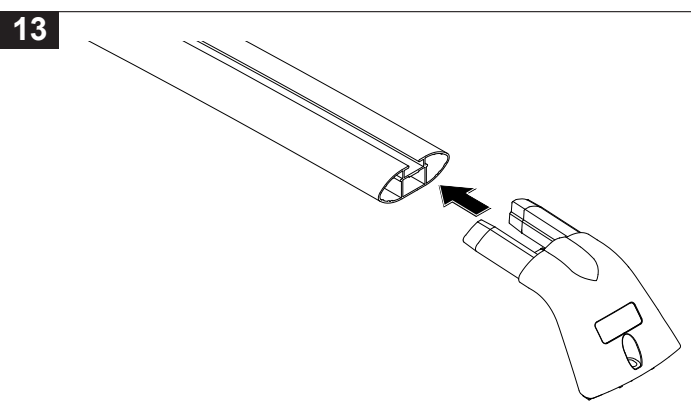


Ssangyong Actyon RSPT511

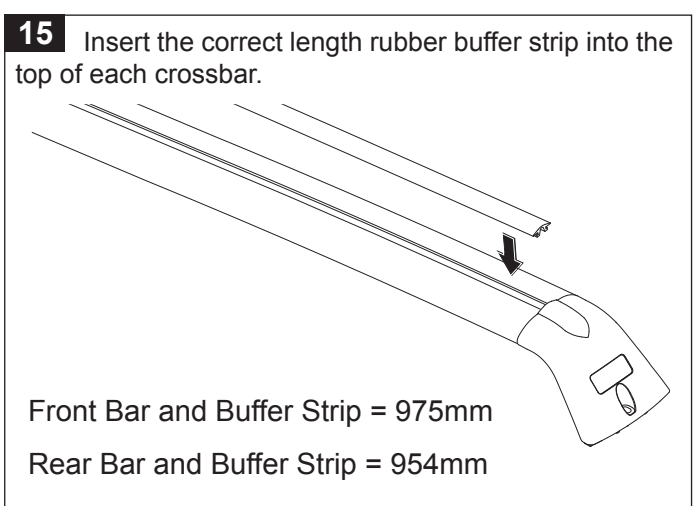
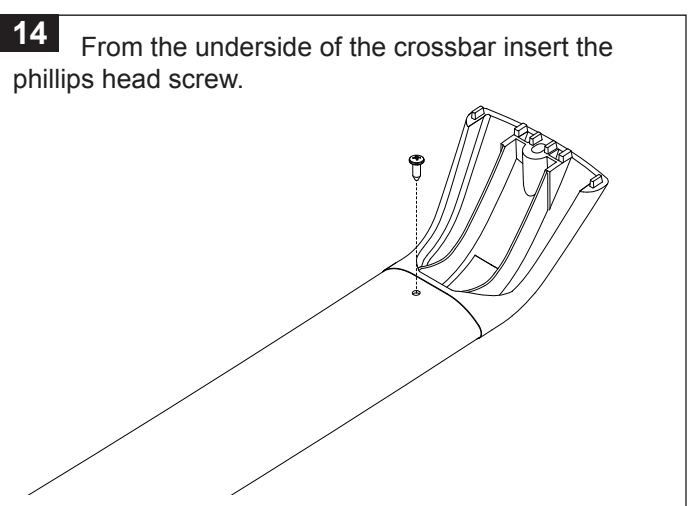
11 Using either a pneumatic or concertina type rivet gun, rivet the track into place. Make sure all rivets are seated firmly onto the base of the track. **Check track alignment again as shown in step 5.** Rivet the track in the order shown.



Insert two brass hex nuts per track from the rear and slide to desired position



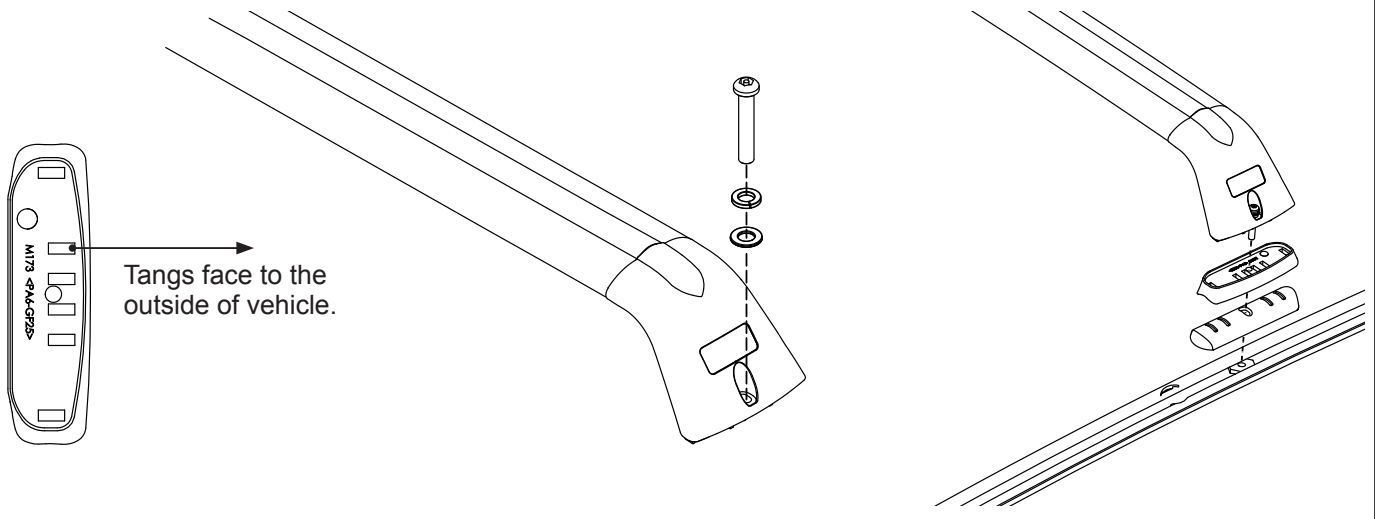
Insert the RSP leg fully into the crossbars. A rubber mallet may be required to knock the leg in place.





Ssangyong Actyon RSPT511

- 16** Place the bottom pad over the brass hex nut followed by the top pad. Sit the crossbar assembly on the Top Pad. Place the M6 security screw and washers through the hole in the leg as shown and screw into the brass nut. Tightening torque is 3-4 Nm (2-3 lb/ft). Tighten after positioning both sides equally.



- 17** Position the front edge of the base pad 70mm from the front edge of the track. Position the rear leg and crossbar 700mm apart, tighten to 3-4 Nm (2-3 lb/ft).

