



RHINO-RACK

Aerodynamic & Heavy Duty Roof Rack Systems

Mazda Tribute Rhino Heavy Duty - Two Bar Trackmount System

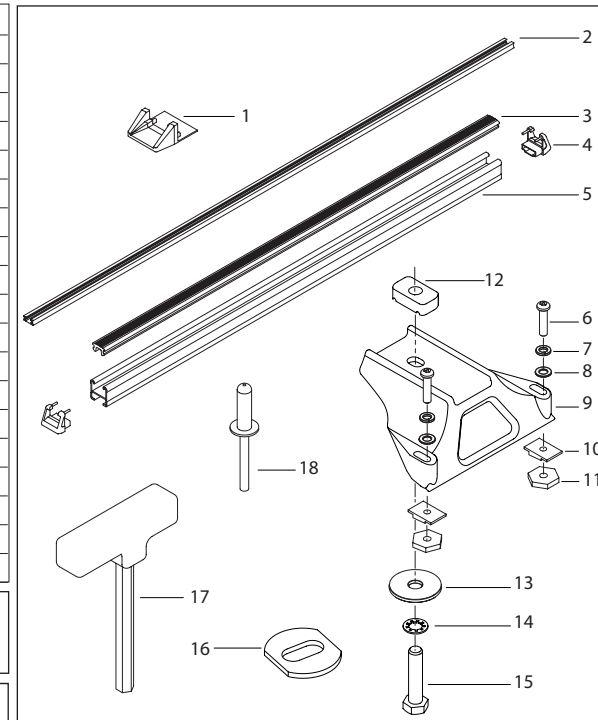
Place these instructions in the vehicle's glove box after installation is complete.

Important: Please read these instructions carefully prior to installation.
Please refer to your fitting instruction to ensure that the roof racks are installed in the correct locations.
Check the contents of kit before commencing fitment and report any discrepancies

Parts List

Maximum carrying capacity: 80kg

Item	Component Name	Qty	Part No.
1	Track End Cap	4	C393
2	Track 1400mm	2	A260
3	Heavy Duty Rubber Buffer 1375mm	2	R004
4	Heavy Duty Crossbar End Cap	4	M002
5	Heavy Duty Crossbar 1375mm	2	A020
6	M6 x 35mm Button Security Screw	8	B092
7	M6 Spring Washer	8	W004
8	M6 x 12.5mm Flat Washer	8	W003
9	RLTP Track Mount Leg	4	M010
10	Track Mount Wedge	8	M148
11	M6 x 21.43mm x 4.40mm Brass Nut	8	N009
12	M10 Channel Nut	4	N024
13	M10 x 38mm Flat Washer	4	W022
14	M10 Internal Shakeproof Washer	4	W021
15	M10 x 25mm Hex Bolt	4	B071
16	Flat Sided Washer	12	W026
17	5mm Security Allen Key	1	SECKEY-S
18	Rivet	19	H005
19	Fitting Instruction	1	RR 128



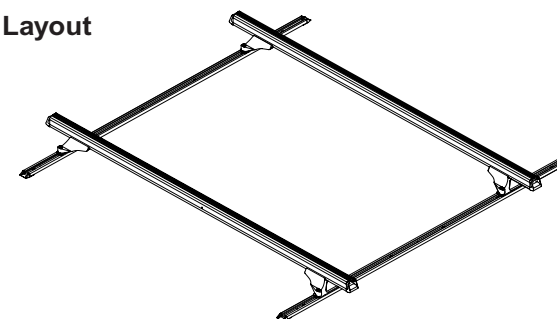
Care Instruction:

Clean vehicle roof prior to fitting Rhino Heavy Duty roof racks.

Tools Required

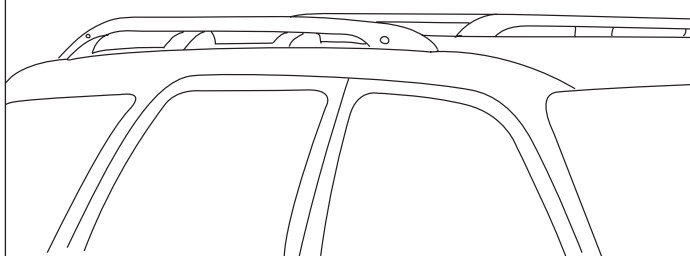
Pneumatic or concertina type rivet gun
Marking pen
Phillips Head Screwdriver
Power or Cordless drill
5mm drill bit with depth stop
Vacuum cleaner
Cold galvanizing solution & brush
Selleys Butyl Mastic
5mm Security Allen key, provided in kit
5/8 or 16mm spanner or socket wrench
Measuring tape

Layout



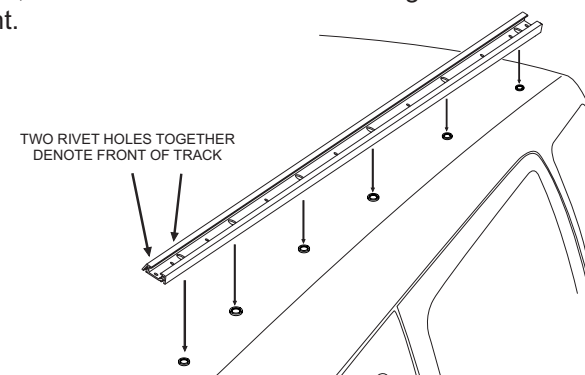
Remove the original roof racks by unscrewing the six Phillips head screws from each side of the track. Retain the screws as they will be used for fitment of the new tracks. There is no need to remove the cross bars separately, as the complete rack unit lifts off.

1



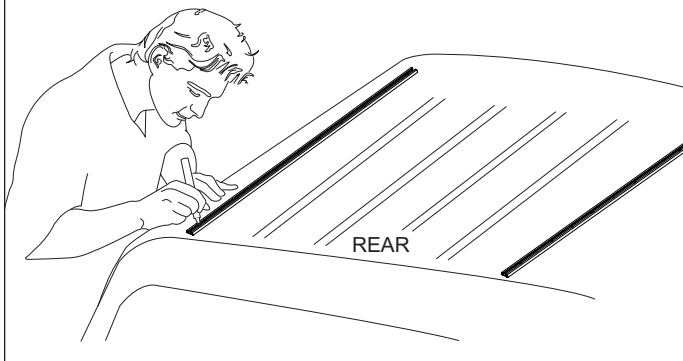
Place the Rhino track over the six nut-serts. Use the original screws to hold the track in place. Do not fully tension, as the track will be removed again before final fitment.

2



With the tracks secured, mark out all holes for the rivets.
Remove the track.

3



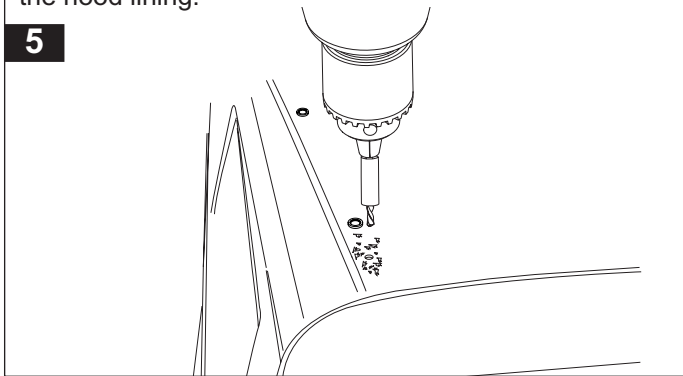
Accurately centre punch all holes before drilling.

4



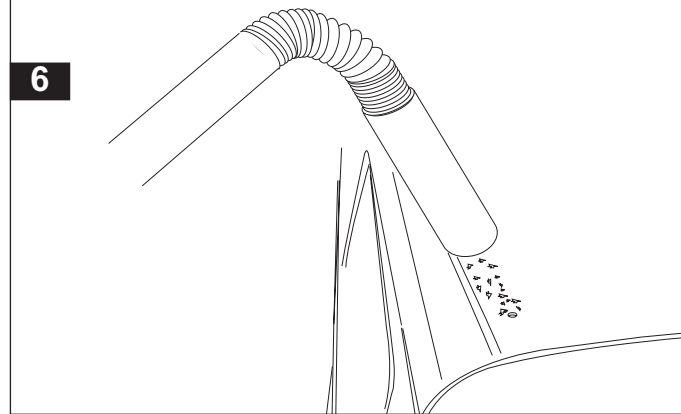
Drill through roof using a 5mm drill bit and a drill stop.
Set the drill stop to ensure you don't drill through the roof
lining. Using a drill stop will alleviate the need to remove
the hood lining.

5



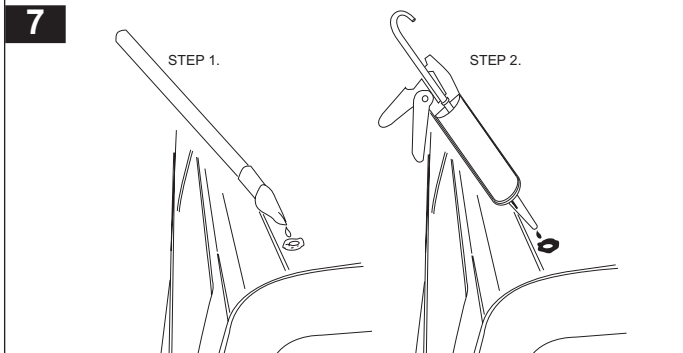
Vacuum swarf from the roof then wipe clean with a rag.

6



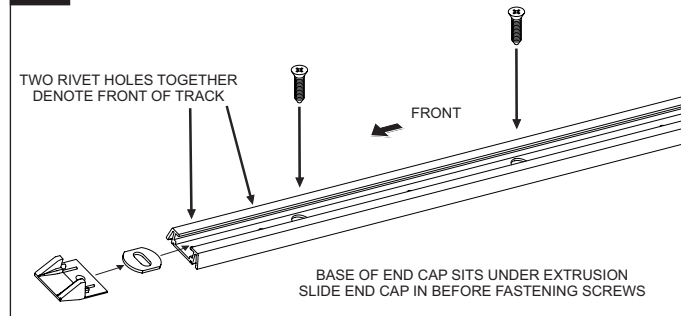
Apply a liberal amount of cold galvanizing solution to the
inside and surrounds of all holes. Allow to dry, three
to four minutes. Next apply an amount of Selleys Butyl
Mastic in and around each hole.

7



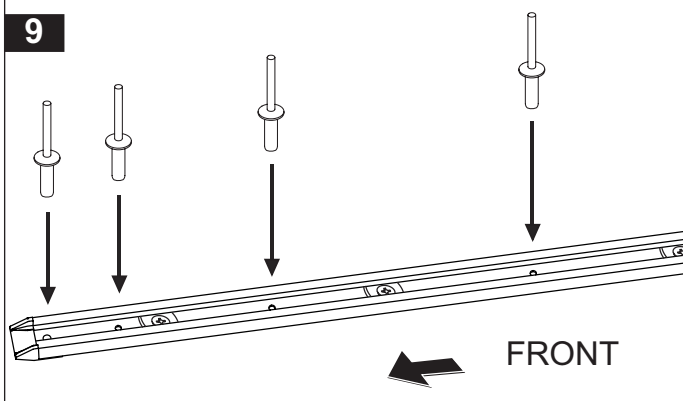
Peel the backing strips off the track. Accurately locate and
place each track over the nut-sets. Slide the supplied flat
sided washers under the original screws. Slide the end
cap on before tightening screws (3-4Nm).

8



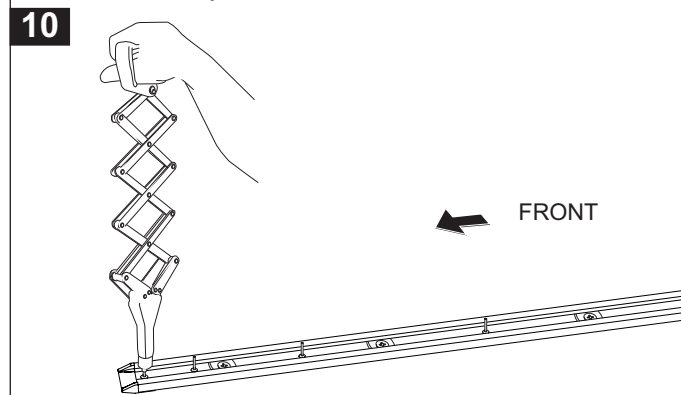
Make sure that the hole on the end cap lines up with the
hole in the track before riveting in place.

9



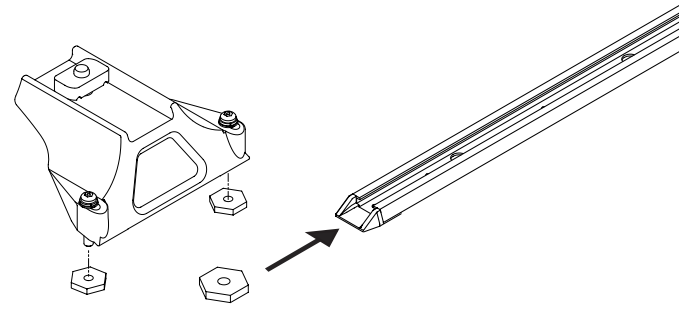
Using either a pneumatic or concertina type rivet gun,
rivet track and end caps into place, making sure all rivets
are seated firmly onto the base of the track.

10



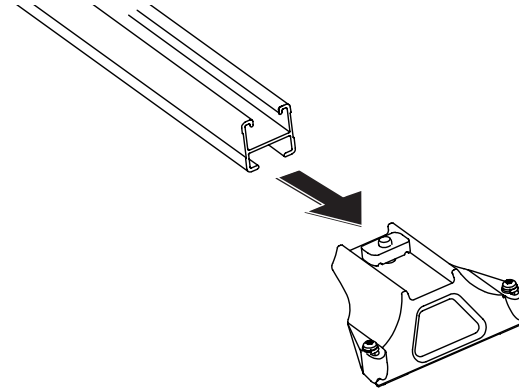
Unscrew the brass hex nuts from RLTP legs and slide them into the roof track. The legs will be fitted in place after the crossbars are attached.

11



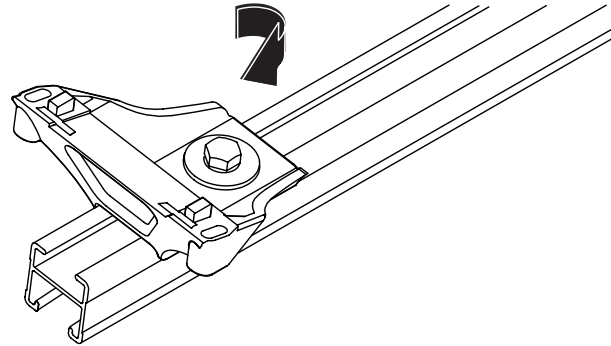
Slide the Crossbar onto the leg and locate with the M10 channel nut. Leave untensioned at this stage.

12



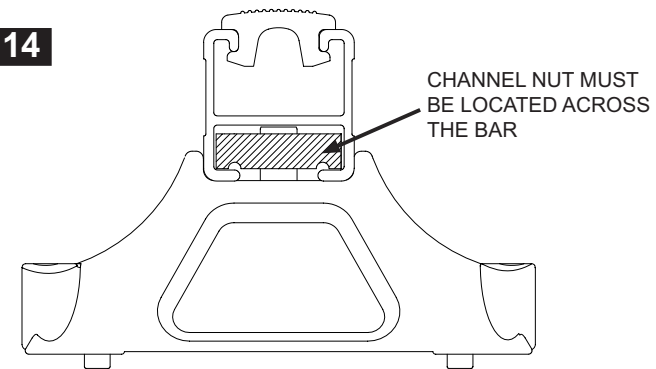
Finger tighten the leg attachment bolt so that the channel nut turns to locate across the crossbar. The legs will require adjustment later.

13



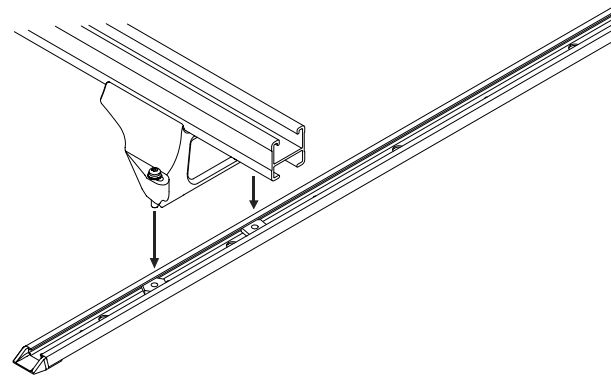
Check that the channel nut is fully located across the bar.

14



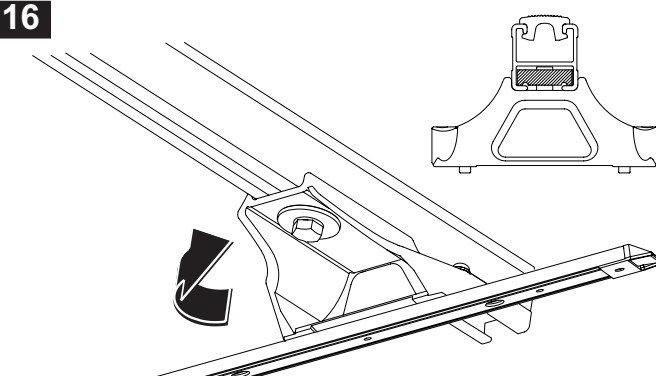
Locate the RLTP legs onto the tracks then screw M6 Security screws into the brass hex nuts (3-4Nm). Leave loose for adjustment.

15



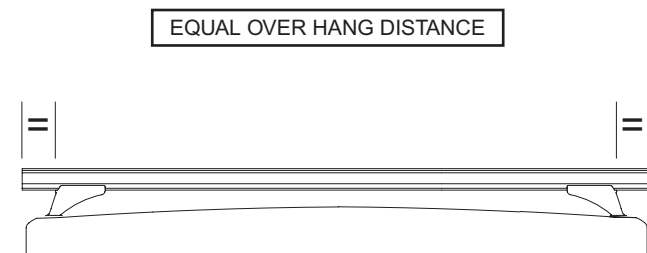
Tighten the crossbar attachment bolts. Recommended tightening torque (5Nm). Ensure that the channel nut is located across the crossbar.

16



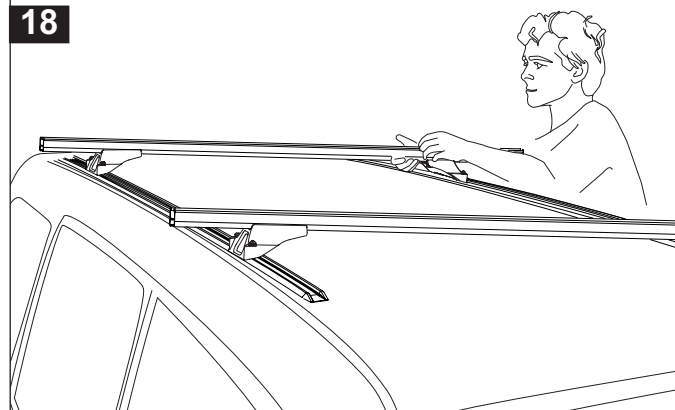
Check the crossbar over hang is equal on both sides, re-adjust if required.

17



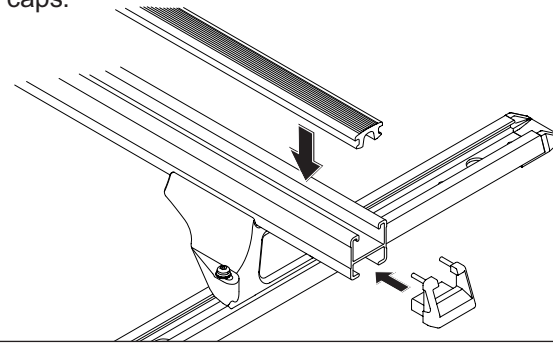
When front and rear crossbars are in required positions, tension RLTP legs and crossbars.

18



Insert the crossbar rubber buffer strip into the top of the crossbar. Insert the end caps into the ends of the crossbar, a rubber mallet may be required to fit the end caps.

19



Important Information

Maximum carrying capacity: 80kg

Recommendations

It is essential that all bolt connections be checked after driving a short distance when you first install your crossbars.

Bolt connections should be checked again at regular intervals (probably once a week is enough, depending on road conditions, usage, loads and distances travelled). You should also check the roof bars each time they are refitted.

Make sure to fasten your load securely. Please ensure that all loads are evenly distributed and that the centre of gravity is kept as low as possible.

Use only non-stretch fastening ropes or straps.

Sensitivity to Crosswinds, Behaviour in Curves and Braking

The handling characteristics of the vehicle, changes when you transport a load on the roof. For safety reasons, we recommend you exercise extreme care when transporting wind-resisting loads; special consideration must be taken into account when braking.

Please remove crossbars when putting vehicle through an automatic car wash.

Load Ratings

Maximum permissible load is 80kg per pair of roof racks (include the weight of the roof bars, 5kg). When roof racks are to be used in off-road conditions, please build a safety factor of 1.5 into this load limit. Although the roof racks are tested and approved to AS1235-2000, Australian road conditions can be much more rigorous. However, increasing the number of crossbars does not increase the vehicles maximum permissible roof loading.

Note for Dealers and Fitters

It is your responsibility to ensure instructions are given to the end user or client

Rhino-Rack
3 Pike Street, Rydalmere,
NSW 2116, Australia.
(Ph) (02) 9638 4744
(Fax) (02) 9638 4822

Document No: RR-128
Prepared By: Craig Jones
Authorised By: Gary England

Issue No: 01
Issue Date: 08/06/2005

These instructions remain the property of Fetovu Pty Ltd T/as Rhino-Rack and may not be used or changed for any other purpose than intended.