



CXBS2

Item	Component	Qty
1	M8 x 35mm Hex	2
2	M6 x 30mm Hex	2
3	Rails Spacer No.1	2
4	Rails Spacer No.2	2
5	M6 Nyloc Nuts	2
6	M6 x 12.5mm Flat Washer	2

Note:

CXBS1 is intended for use with CXB leg kits.

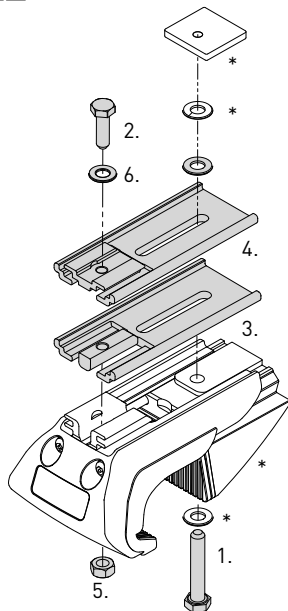
For detailed installation instructions, refer to CXB instructions (RR61).

*Included in CXB leg kit hardware.

Issue: 02

Document No: R1359

Date: 18/11/2021



CXBS2

Item	Component	Qty
1	M8 x 35mm Hex	2
2	M6 x 30mm Hex	2
3	Rails Spacer No.1	2
4	Rails Spacer No.2	2
5	M6 Nyloc Nuts	2
6	M6 x 12.5mm Flat Washer	2

Note:

CXBS1 is intended for use with CXB leg kits.

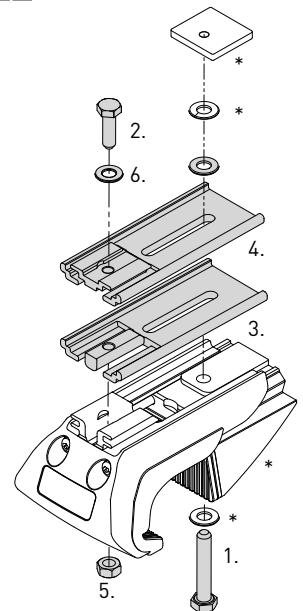
For detailed installation instructions, refer to CXB instructions (RR61).

*Included in CXB leg kit hardware.

Issue: 02

Document No: R1359

Date: 18/11/2021



CXBS2

Item	Component	Qty
1	M8 x 35mm Hex	2
2	M6 x 30mm Hex	2
3	Rails Spacer No.1	2
4	Rails Spacer No.2	2
5	M6 Nyloc Nuts	2
6	M6 x 12.5mm Flat Washer	2

Note:

CXBS1 is intended for use with CXB leg kits.

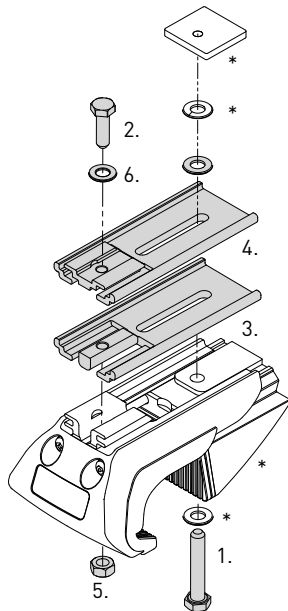
For detailed installation instructions, refer to CXB instructions (RR61).

*Included in CXB leg kit hardware.

Issue: 02

Document No: R1359

Date: 18/11/2021



CXBS2

Item	Component	Qty
1	M8 x 35mm Hex	2
2	M6 x 30mm Hex	2
3	Rails Spacer No.1	2
4	Rails Spacer No.2	2
5	M6 Nyloc Nuts	2
6	M6 x 12.5mm Flat Washer	2

Note:

CXBS1 is intended for use with CXB leg kits.

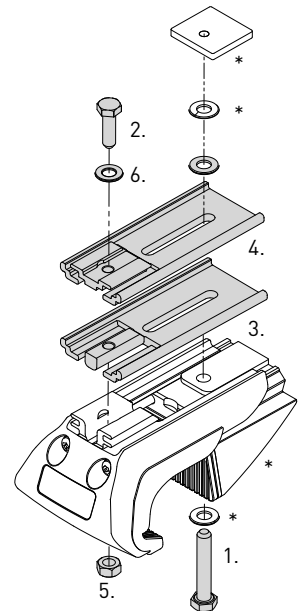
For detailed installation instructions, refer to CXB instructions (RR61).

*Included in CXB leg kit hardware.

Issue: 02

Document No: R1359

Date: 18/11/2021



CXBS2

Item	Component	Qty
1	M8 x 35mm Hex	2
2	M6 x 30mm Hex	2
3	Rails Spacer No.1	2
4	Rails Spacer No.2	2
5	M6 Nyloc Nuts	2
6	M6 x 12.5mm Flat Washer	2

Note:

CXBS1 is intended for use with CXB leg kits.

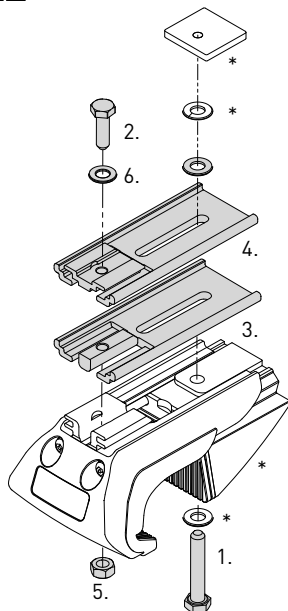
For detailed installation instructions, refer to CXB instructions (RR61).

*Included in CXB leg kit hardware.

Issue: 02

Document No: R1359

Date: 18/11/2021



CXBS2

Item	Component	Qty
1	M8 x 35mm Hex	2
2	M6 x 30mm Hex	2
3	Rails Spacer No.1	2
4	Rails Spacer No.2	2
5	M6 Nyloc Nuts	2
6	M6 x 12.5mm Flat Washer	2

Note:

CXBS1 is intended for use with CXB leg kits.

For detailed installation instructions, refer to CXB instructions (RR61).

*Included in CXB leg kit hardware.

Issue: 02

Document No: R1359

Date: 18/11/2021

