

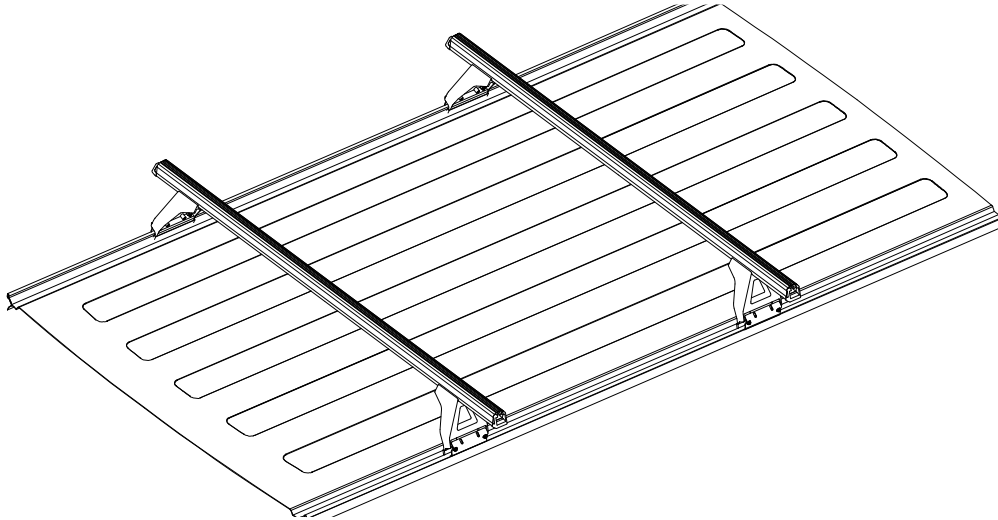


**CONTROLLED**

# RHINO-RACK

## RL150GMC Rhino Heavy Duty - Chevrolet Express & GMC Savana

**Important:** Please read these instructions carefully prior to installation.  
Please refer to your fitting instruction to ensure that the roof racks are installed in the correct locations.  
Check the contents of kit before commencing fitment and report any discrepancies.  
Place these instructions in the vehicle's glove box after installation is complete.



**Care Instruction:** Wash vehicle roof prior to installing Rhino Roof Racks.

### Important Information

**Maximum carrying capacity: 220 lbs (100kg)**

**Recommendations:**

It is essential that all bolt connections be checked after driving a short distance when you first install your cross bars. Bolt connections should be checked again at regular intervals (probably once a week is enough, depending on road conditions, usage, loads and distances travelled). You should also check the cross bars each time they are re-fitted.

Make sure to fasten your load securely. Please ensure that all loads are evenly distributed and that the centre of gravity is kept as low as possible.

**Use only non-stretch fastening ropes or straps.**

**Sensitivity to cross winds, behaviour in curves and braking.**

The handling characteristics of the vehicle, changes when you transport a load on the roof. For safety reasons, we recommend you exercise extreme care when transporting wind-resisting loads; special consideration must be taken into account when braking.

**Please remove cross bars when putting vehicle through an automatic car wash.**

**Load Ratings:**

Maximum permissible load is 220lbs (100kg) per pair of cross bars (include the weight of the cross bars, 11lbs (5kg). When cross bars are to be used in off-road conditions, please build a safety factor of 1.5 into this load limit. Although the cross bars are tested and approved to AS1235-2000, some road conditions can be much more rigorous. However, increasing the number of cross bars does not increase the vehicles maximum permissible roof loading.

**Note for Dealers and Fitters:**

It is your responsibility to ensure instructions are given to the end user or client.

Rhino-Rack  
3 Pike Street, Rydalmere,  
NSW 2116, Australia.  
(Ph) (02) 9638 4744  
(Fax) (02) 9638 4822

Document No: RR-155  
Prepared By: Craig Jones  
Authorised By: Chris Murty

Issue No: 03  
Issue Date: 22/12/2014

These instructions remain the property of Rhino-Rack and may not be used or changed for any other purpose than intended.



# RL150GMC Rhino Heavy Duty - GMC Express Van

## Parts List

**NOTE:** The list below contains parts to mount a single cross bar only. In order to mount a two bar system two of these kits are required.

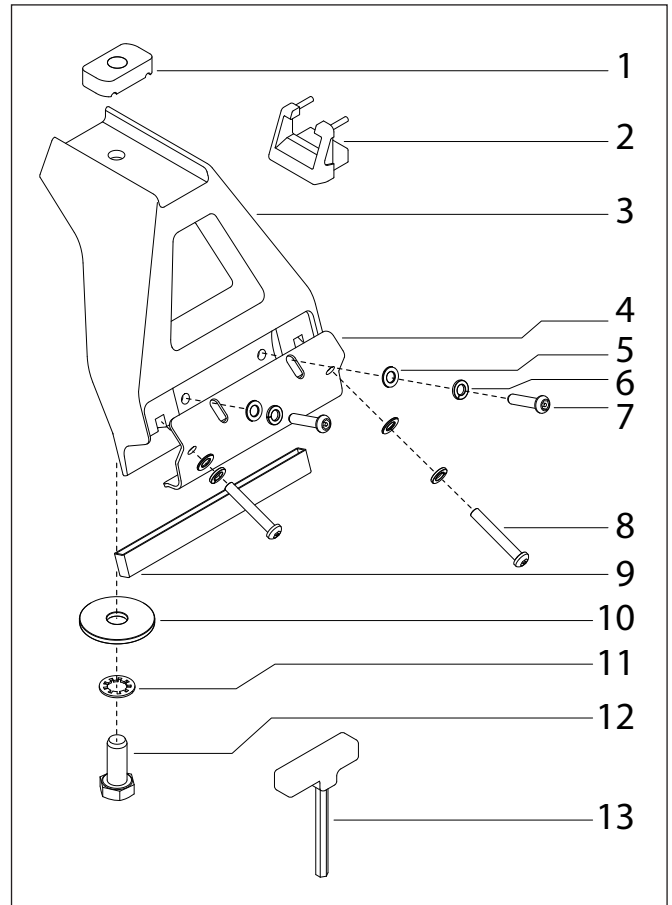
Item	Component Name	Qty	Part No.
1	M10 Channel Nut	2	N024
2	Hd End Cap sold separately		
3	150mm Nylon Leg	2	M150
4	GMC Express Gutter Clamp	2	C248
5	M6 x 12.5mm Flat Washer	8	W003
6	M6 Spring Washer	8	W004
7	M6 x 27mm Button Security Screw	4	B063
8	M6 x 40mm Button Security Screw	4	B085
9	Guttermount Rubber Foot Sleeve	2	M053
10	M10 x 38mm x 2.5mm Flat Washer	2	W022
11	M10 Internal Shake Proof Washer	2	W021
12	M10 x 25mm Hex Bolt	2	B071
13	5mm Security Allen Key	1	SECKEY-S
14	Fitting Instruction	1	RR-155

### Tools Required:

5/8" Wrench.

Rubber Mallet.

Allen Key, provided in kit.

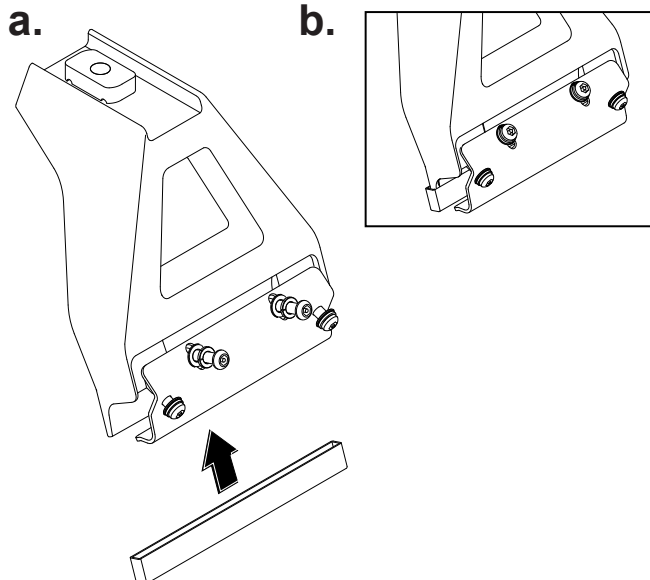


### IMPORTANT Care Instruction:

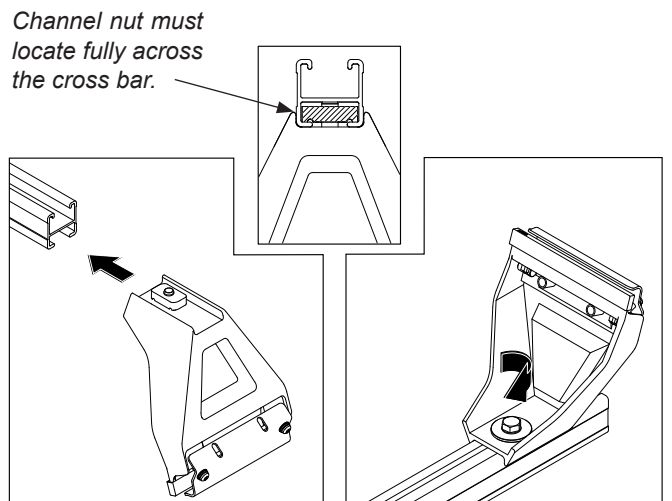
**Wash the roof gutter prior to fitting the Rhino legs and cross bars.**

**PLEASE READ THROUGH INSTRUCTIONS BEFORE FITTING.**

**1** a. Loosen the two upper M6 security screws from the leg and fit the rubber boot to the leg. b. Rubber boot attached and screws in position. **Do not tighten at this stage.**



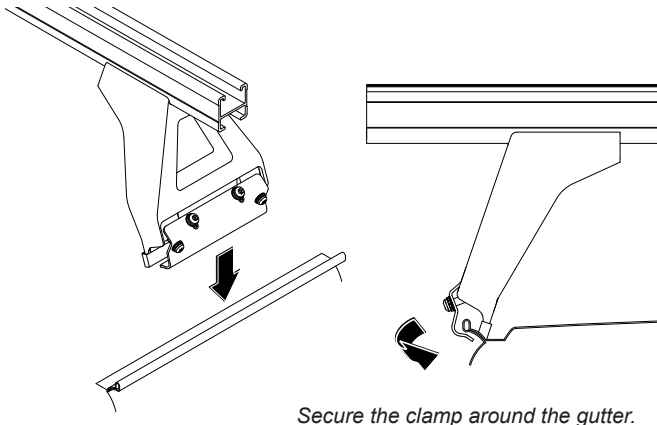
**2** Install the cross bar onto the legs and position the legs at the ends of the cross bar. Push the leg attachment bolt up and turn the bolt so that the channel nut is fully located across the cross bar. Finger tighten the attachment bolt as the legs will require adjustment when placed onto the vehicle.



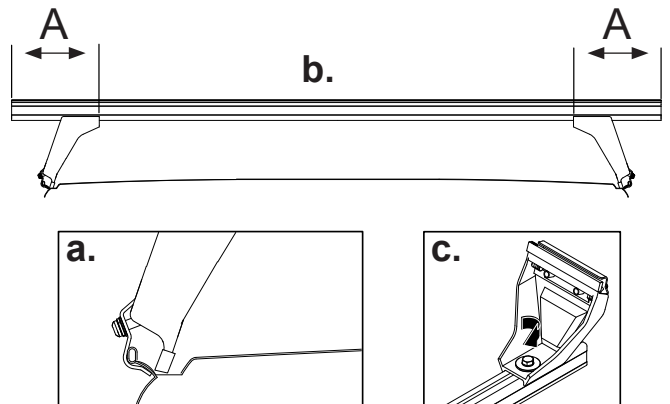


## RL150GMC Rhino Heavy Duty - GMC Express Van

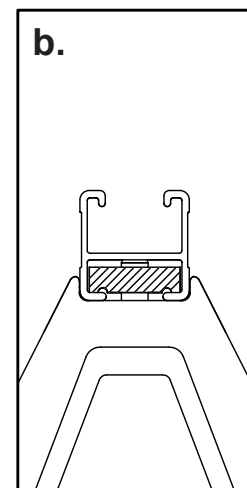
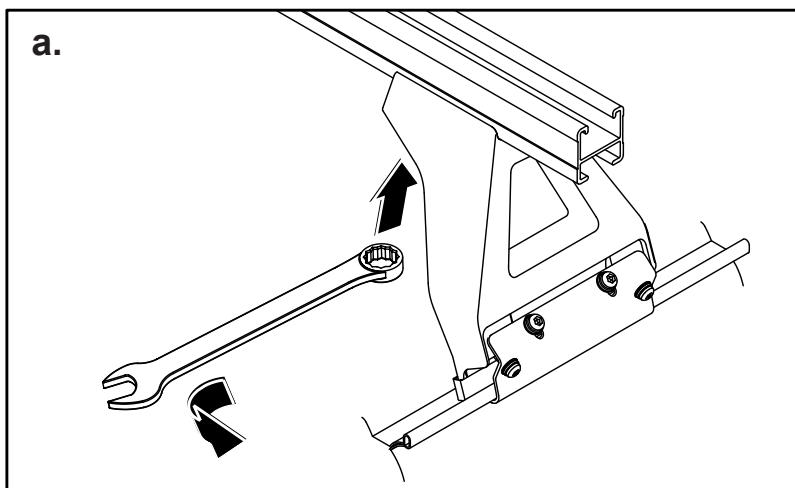
- 3** Place the cross bar and leg assembly onto the roof by hooking the clamp around the gutter.



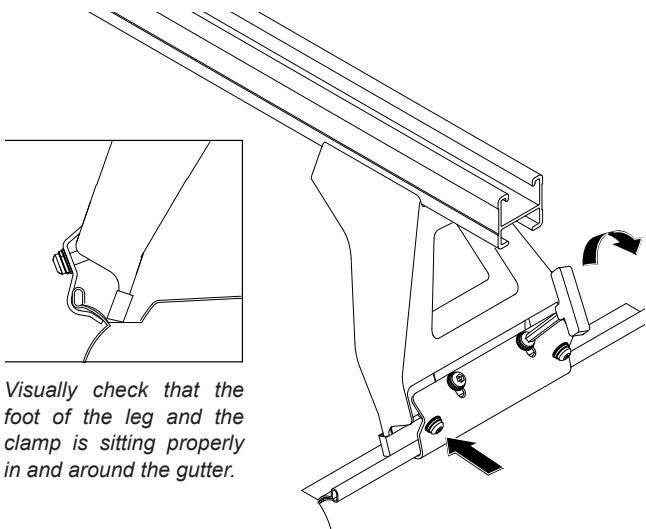
- 4** a. Adjust the legs so that the foot of the legs sit into the corner of the gutter. b. Adjust the cross bar to ensure overhang (A) is equal both sides. c. Finger tighten the cross bar attachment bolts.



- 5** a. Finger tighten the gutter clamp. Tighten the cross bar attachment bolt with a 5/8" wrench. **DO NOT OVER TIGHTEN.** b. Check the channel nut is fully located across the cross bar after tightening.



- 6** Progressively and evenly tighten the upper and lower clamp screws to secure the leg and clamp to the gutter. Tighten the four M6 screws to 3-4N/m.



- 7** Insert the rubber buffer strip into the top of the cross bar. Insert the end caps into the ends of the cross bar. A rubber mallet may be needed to knock these in. Check all attachment bolts and screws after fitment.

