



# RHINO-RACK

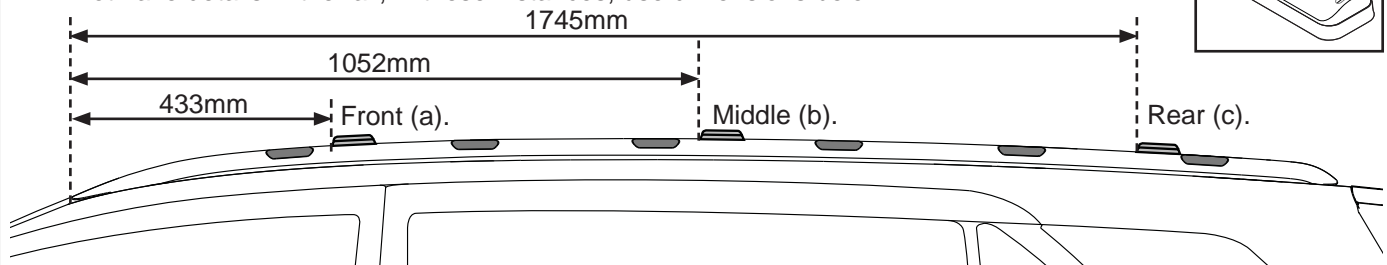
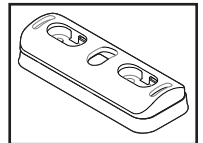
## Ford Everest Nutsert Pioneer Fitment

- Important:**
- ☐ 1. Please refer to your fitting instruction to ensure that the roof racks are installed in the correct locations.
  - ☐ 2. Check the contents of kit before commencing fitment and report any discrepancies.
  - ☐ 3. Place these instructions in the vehicle's glove box after installation is complete.
  - ☐ 4. These instructions must be followed for warranty to be upheld.

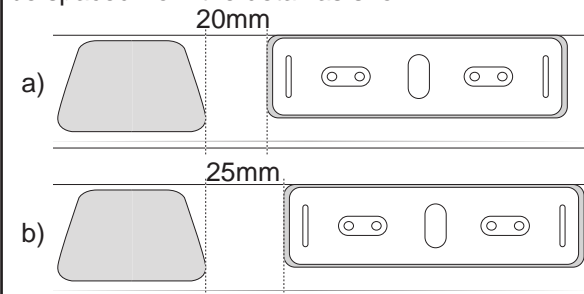
On Road Cargo Allowance	Off Road Cargo Allowance	Roof Allowance	Rack Weight
95kg / 209lb	50kg / 110lbs	100kg / 220lbs	5kg / 11lb

**1**

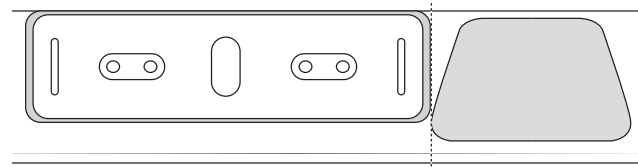
Move to the factory rail of the vehicle. Locate the 6 details in the rail and place an RCP63-BK base kit assembly in the positions indicated below. **Note:** MY18 models will not have details in the rail, in these instances, use dimensions below.



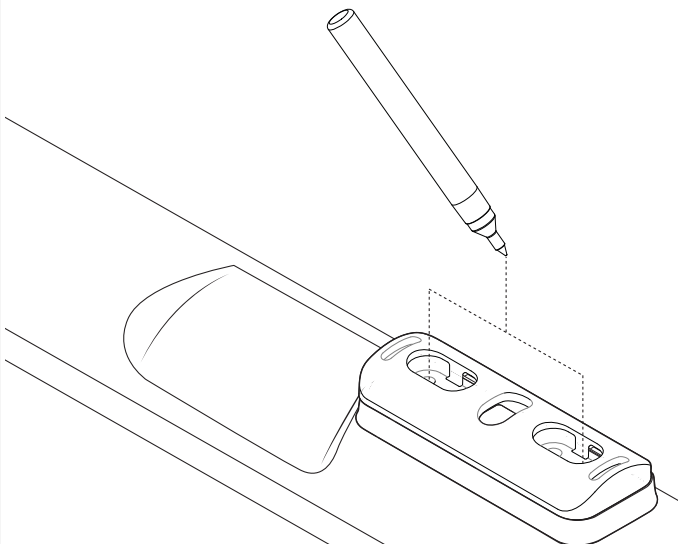
(a/b) **MY17 only** - Sit the base assembly flush with the rear of the rail. The side of the rubber skirt should be spaced from the detail as shown.



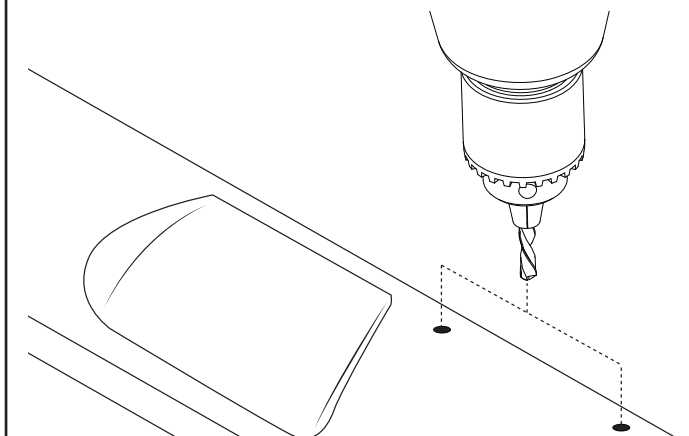
(c) **MY17 only** - Sit the base assembly flush with the rear of the rail. The side of the rubber skirt should be in line rail detail as shown.

**2**

Spot mark the outer two mounting points in each base.

**3**

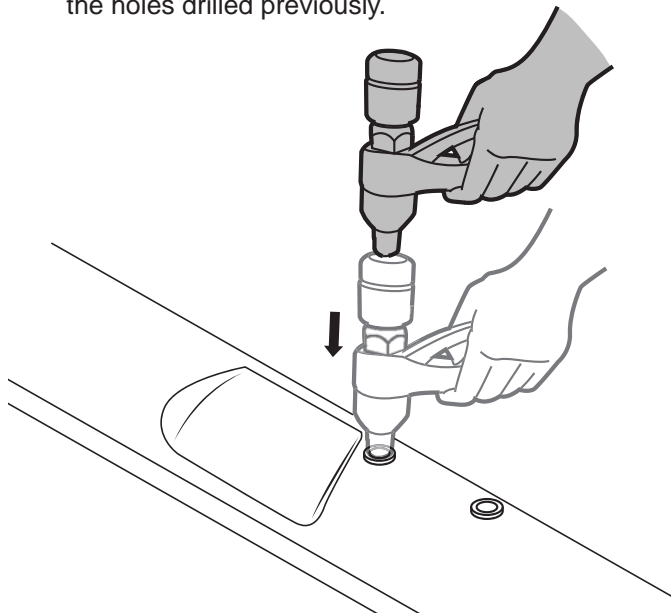
Drill through the references made with a 9mm drill bit.





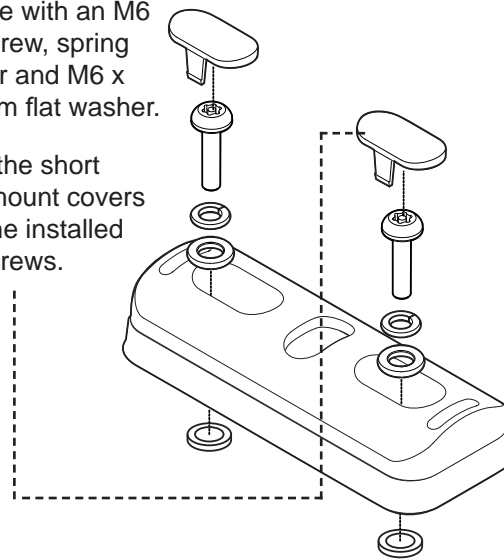
## Ford Everest Nutsert Pioneer Fitment

- 4** Using a nutsert tool, install the nutserts into the holes drilled previously.

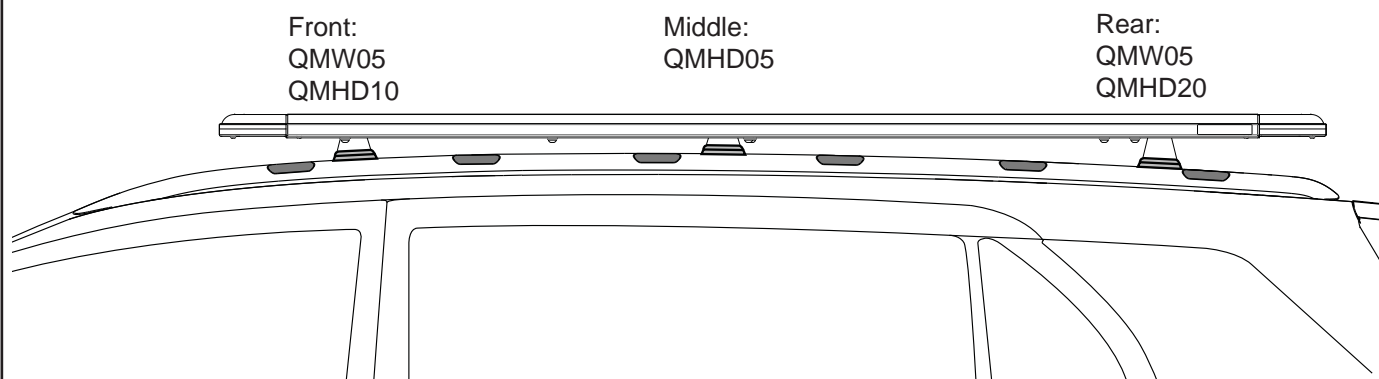


- 5** Place the base assemblies over the installed nutserts. Fix in place with an M6 torx screw, spring washer and M6 x 12.5mm flat washer.

Place the short fixed mount covers over the installed torx screws.



- 6** Install the platform as per corresponding instructions. Be aware of spacer placement to achieve a level platform.



Prepared By: Kayle Everett

Authorised: Chris Murty

Document: R1589

Date: 02/03/18 Issue: 02