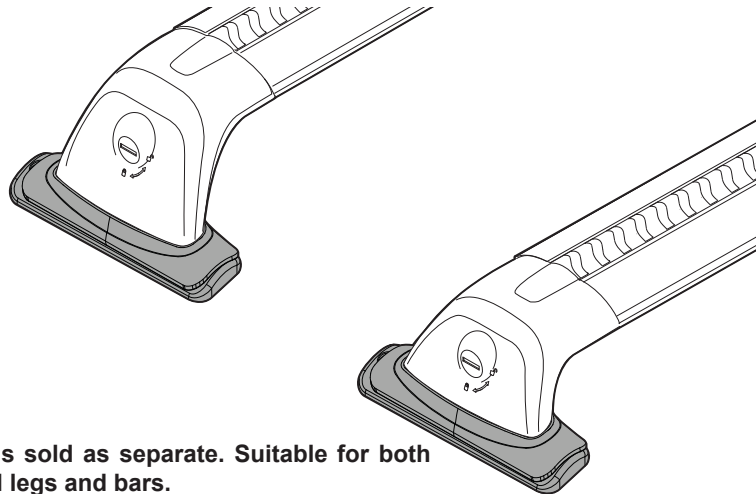




RHINO-RACK

RCP56-BK RFMS2 Kit

- Important:**
- 1. Please refer to your fitting instruction to ensure that the roof racks are installed in the correct locations.
 - 2. Check the contents of kit before commencing fitment and report any discrepancies.
 - 3. Place these instructions in the vehicle's glove box after installation is complete.
 - 4. These instructions must be followed for warranty to be upheld.



Note: Crossbars and legs sold as separate. Suitable for both RVL , RVH, RCL and RCH legs and bars.

Maximum carrying capacity: 75kg (165lbs) evenly distributed over crossbars.

On Road Cargo Allowance	Off Road Cargo Allowance	Roof Allowance	Rack Weight
70kg / 165lb	37.5kg / 82lbs	75kg / 165lbs	5kg / 11lb

Maximum carrying capacity: 75kg (165lbs) evenly distributed over crossbars when mounted on the strongest section of the roof. Please refer to your vehicle manufacturers handbook for maximum roof loading. Always use the lower of the two figures. Note: Be sure to check the Rhino-Rack website to see if you have the latest version of instructions before beginning.

Advisory:

It is essential that all bolt connections be checked after 48hrs from when you first install your crossbars. Bolt connections should be checked again at regular intervals (once a week is enough, depending on road conditions, usage, loads and distances travelled). You should also check the crossbars each time they are refitted. Make sure to fasten your load securely. Please ensure that all loads are evenly distributed and that the centre of gravity is kept as low as possible.

Use only non-stretch fastening ropes or straps.

Load Ratings

When these roof racks are to be used on a vehicle that is driven off sealed roads, the manufacturer maximum roof load rating (to be found in the vehicle's User Manual) should be divided by a safety factor of **2**. For example, if the vehicle's maximum roof load rating is 75kgs\165lbs, these racks, when fitted to this vehicle should have no more than 37.5kgs/82lbs loaded on them.

Caution:

The handling characteristics of the vehicle changes when you transport a load on the roof. For safety reasons we recommend you exercise extreme care when transporting wind-resistant loads. Special consideration must be taken into account when cornering and braking. **Please remove crossbars when putting vehicle through an automatic car wash.**

Note for Dealers and Fitters: It is your responsibility to ensure instructions are given to the end user or client.

Rhino-Rack
 3 Pike Street, Rydalmere,
 NSW 2116, Australia.
 (Ph) (02) 9638 4744
 (Fax) (02) 9638 4822

Document No: R1670
 Prepared By: Kayle Everett
 Authorised By: Chris Murty

Fit Time: 30min
 Issue No: 01
 Issue Date: 30/10/2017

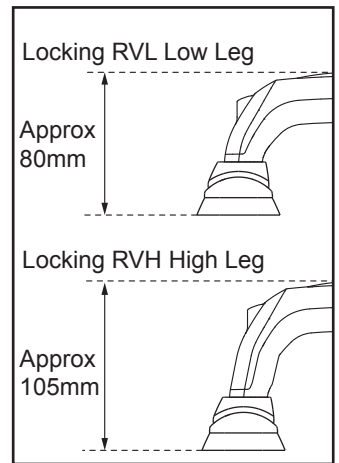
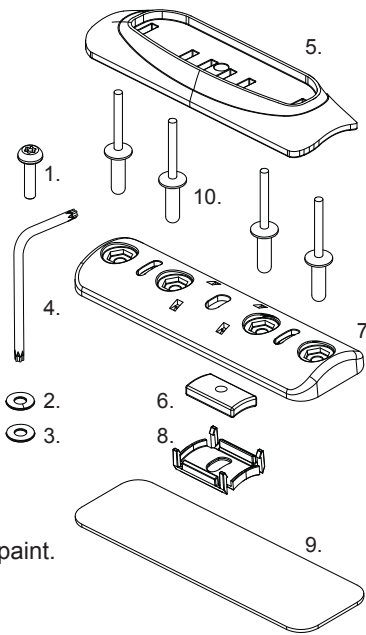
These instructions remain the property of Rhino-Rack Australia Pty. Ltd. and may not be used or changed for any other purpose than intended.



RCP56-BK RFMS2 Kit

Parts List

Item	Components	Qty	Part No.
1	M6 x 27mm torx screw	2	B245
2	M6 spring washer	2	W004
3	M6 flat washer	2	W003
4	T27 torx key	1	H054
5	Sliding mounting pad	2	M508
6	M6 curved cast nut	2	N060
7	Fixed base pad	2	M507
8	Nut retainer	2	M510
9	PVC foam pad	2	C135
10	Rivet	9	H060
11	Instructions	1	R1670



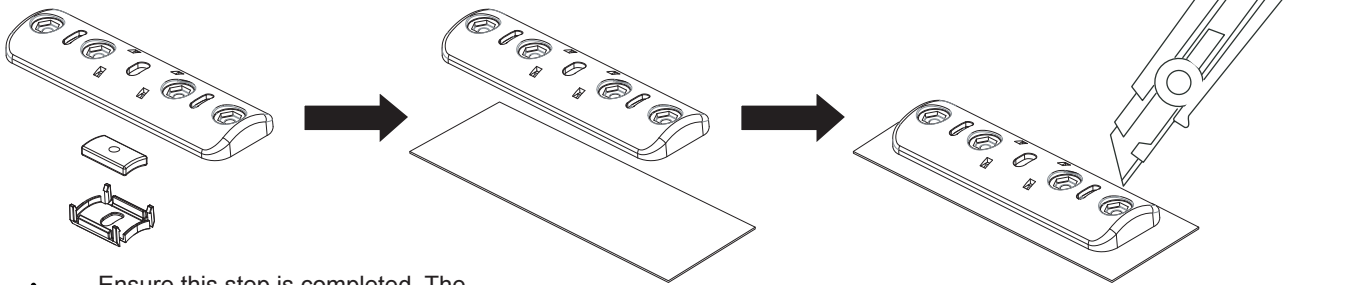
Tools Required: Drill with 5mm drill bit
Knife or blade.
Vacuum.
Rivet gun.
Centre punch.


Butyl mastic.
Drill stop.
Cold galvanising paint.

Note: Legs and Crossbars are sold separate. Be sure to obtain correct kits for your vehicle.

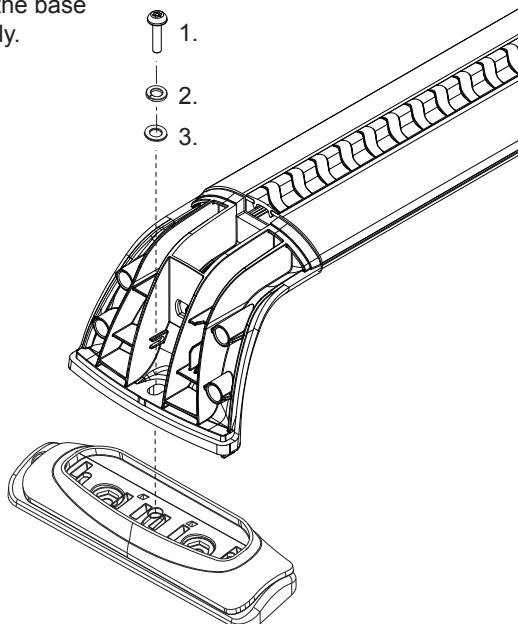
Instructions

- 1** Assemble the curved nut and retainer within the fixed pad as shown. Place the assembly onto the foam pad and cut to size if required.

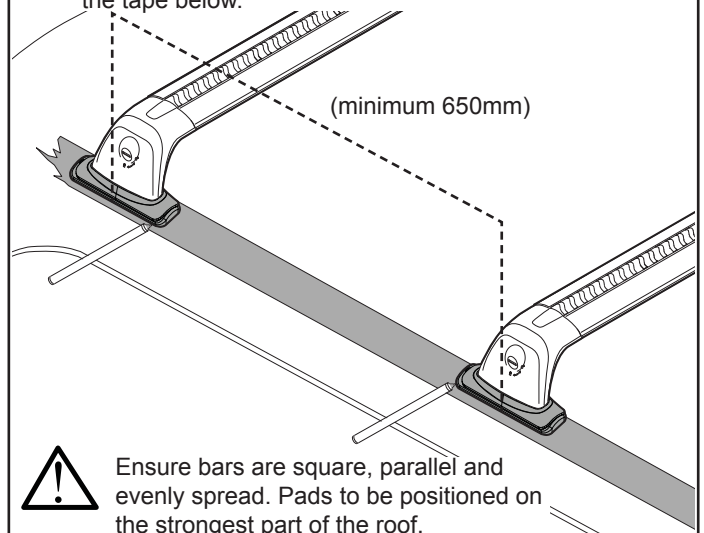


 Ensure this step is completed. The system does not function without properly installing the curved nut.

- 2** Fix the cross-bars to the base assembly.



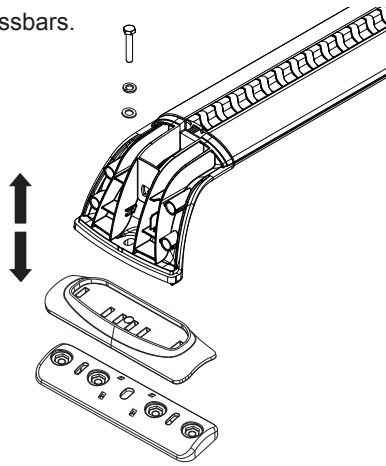
- 3** Tape up the approximate working area on the canopy. Place the crossbars onto the vehicle at the suitable distance apart (minimum 650mm). **Note:** With the crossbars in place, trace around the mounting brackets onto the tape below.



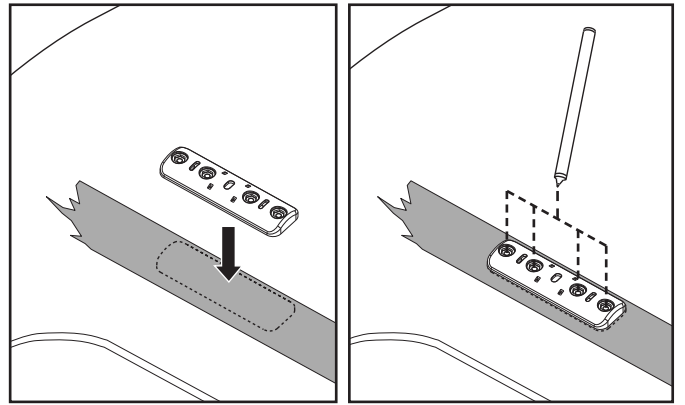


RCP56-BK RFMS2 Kit

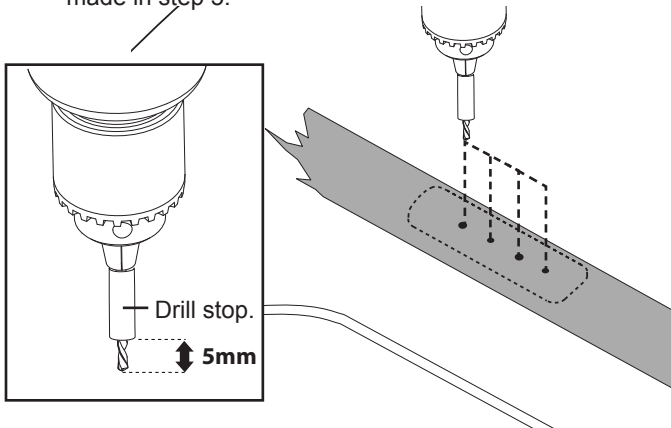
4 Disassemble the crossbars.



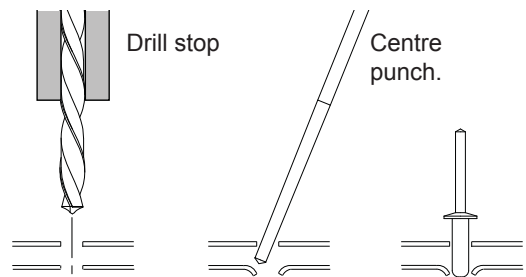
5 Drop the fixed pad in place over the marks made in step 3. Mark the two centre holes of the pad onto the tape below.



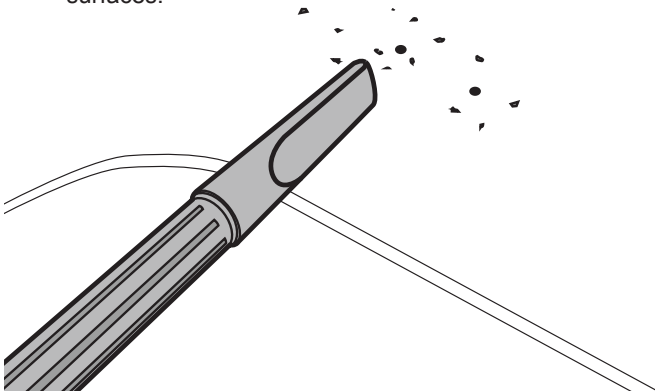
6 Using a 5mm drill bit, drill through the references made in step 5.



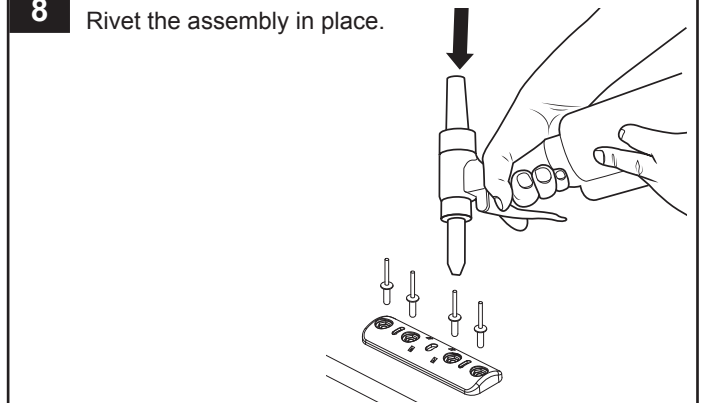
Note: A rivet must be located into each hole and checked that it fully penetrates. If a second skin is encountered, drill second skin then with a centre punch counter sink the hole to allow clearance for rivet. Failing to do this correctly may result in vehicle roof damage due to rivet catching on second skin.



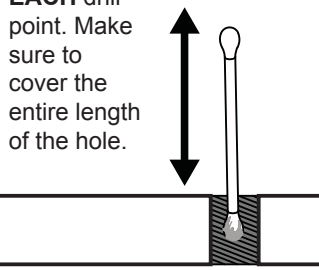
7a Remove the tape. Vacuum away any swarf from the roof. Using a cold galvanising paint, cover any exposed surfaces.



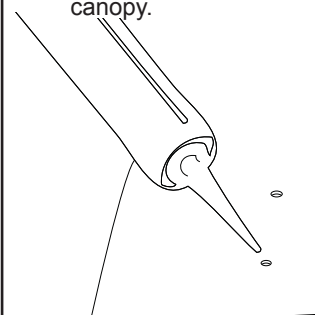
8 Rivet the assembly in place.



7b Apply the Paint inside EACH drill point. Make sure to cover the entire length of the hole.



7c Apply butyl mastic to the drilled holes in the canopy.



9 Fix the crossbars to the installed base assembly.

