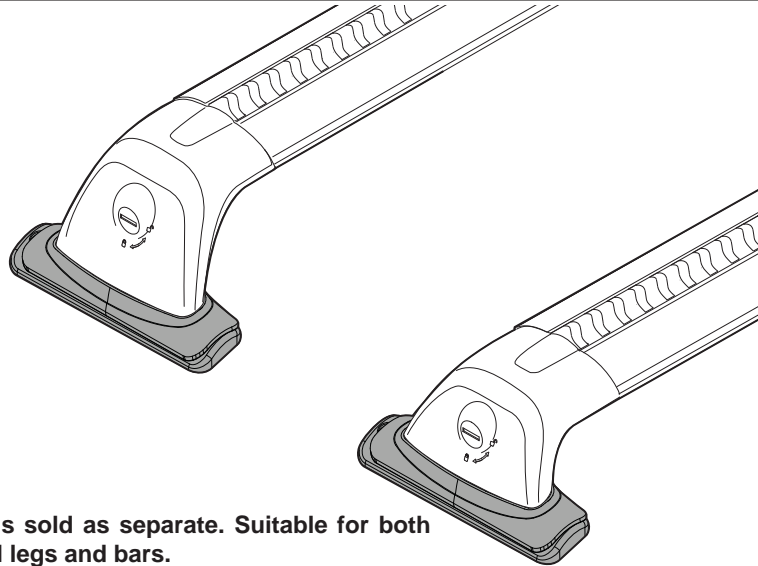




RHINO-RACK

RCP54-BK RFMC2 Kit

Important: Please read these instructions carefully prior to installation. Please refer to your fitting instruction to ensure that the roof racks are installed in the correct locations. Check the contents of kit before commencing fitment and report any discrepancies



Note: Crossbars and legs sold as separate. Suitable for both RVL , RVH, RCL and RCH legs and bars.

Important Information

1. Check Part No./Kit is correct
2. Read through instruction before installing
3. Fit roof rack accessory
4. Check and recheck all fasteners are secure

Maximum carrying capacity: 75kg (165lbs) evenly distributed over crossbars when mounted on the strongest section of the roof. Please refer to your vehicle manufacturers handbook for maximum roof loading. Always use the lower of the two figures. Note: Be sure to check the Rhino-Rack website to see if you have the latest version of instructions before beginning.

Advisory:

It is essential that all bolt connections be checked after 48hrs from when you first install your crossbars. Bolt connections should be checked again at regular intervals (once a week is enough, depending on road conditions, usage, loads and distances travelled). You should also check the crossbars each time they are refitted. Make sure to fasten your load securely. Please ensure that all loads are evenly distributed and that the centre of gravity is kept as low as possible.

Use only non-stretch fastening ropes or straps.

Load Ratings

When these roof racks are to be used on a vehicle that is driven off sealed roads, the manufacturer maximum roof load rating (to be found in the vehicle's User Manual) should be divided by a safety factor of **2**. For example, if the vehicle's maximum roof load rating is 75kgs\165lbs, these racks, when fitted to this vehicle should have no more than 37.5kgs/82lbs loaded on them.

Caution:

The handling characteristics of the vehicle changes when you transport a load on the roof. For safety reasons we recommend you exercise extreme care when transporting wind-resistant loads. Special consideration must be taken into account when cornering and braking. **Please remove crossbars when putting vehicle through an automatic car wash.**

Note for Dealers and Fitters: It is your responsibility to ensure instructions are given to the end user or client.

Rhino-Rack
3 Pike Street, Rydalmere,
NSW 2116, Australia.
(Ph) (02) 9638 4744
(Fax) (02) 9638 4822

Document No: R1463
Prepared By: Kayle Everett
Authorised By: Chris Murty

Fit Time: 30min
Issue No: 01
Issue Date: 23/08/2017

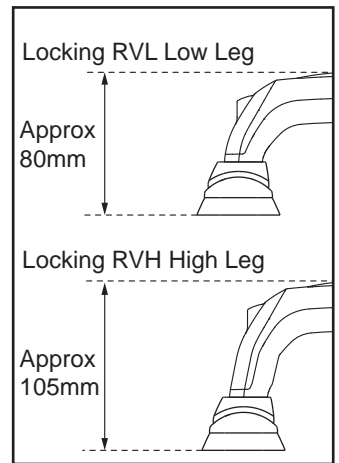
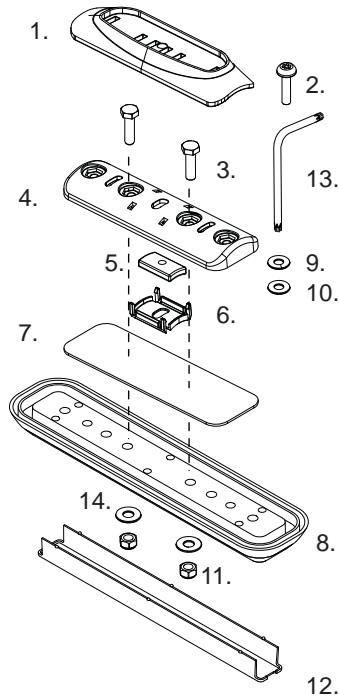
These instructions remain the property of Rhino-Rack Australia Pty. Ltd. and may not be used or changed for any other purpose than intended.



RCP54-BK RFMC2 Kit

Parts List

Item	Components	Qty	Part No.
1	RCP sliding mounting pad	2	M508
2	M6 x 27mm sec torx screw	2	B245
3	M6 x 25mm hex screw	4	B067
4	RCP fixed pad	2	M507
5	M6 curved nut	2	N060
6	RCP curved nut retainer	2	M510
7	PVC foam block	2	C135
8	Canopy lower pad	2	M088
9	M6 spring washer	6	W004
10	M6 x 12.5mm flat washer	2	W003
11	M6 nyloc nut	4	N013
12	Canopy lower pad insert	2	M089
13	T27 torx key	1	H054
14	M6 x 16mm flat washer	4	W031
15	Instructions	1	R1463

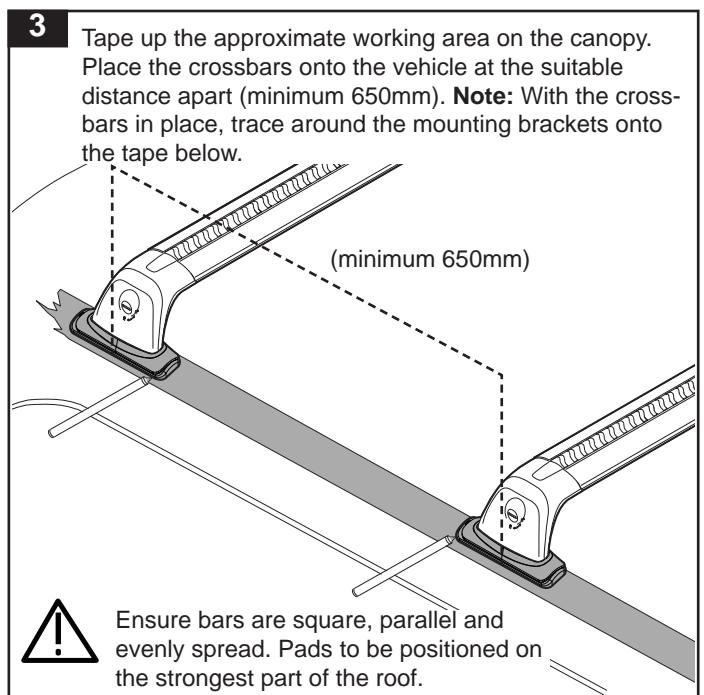
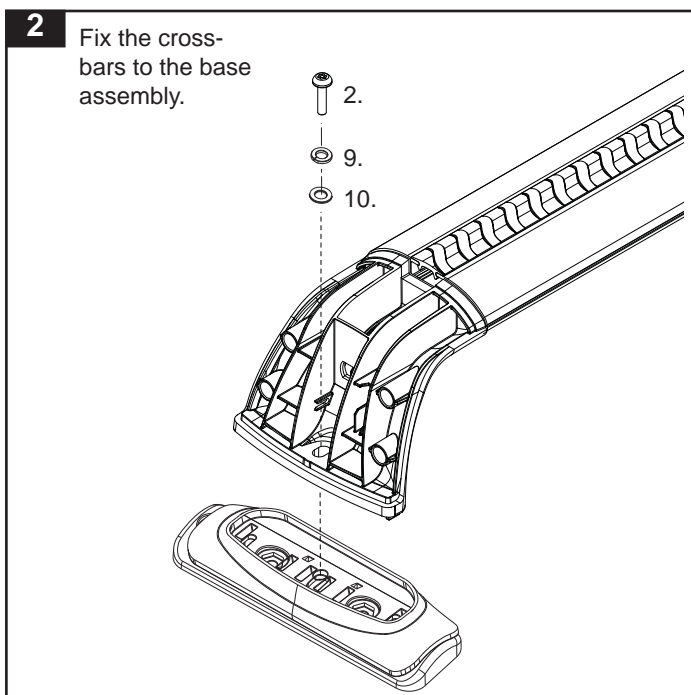
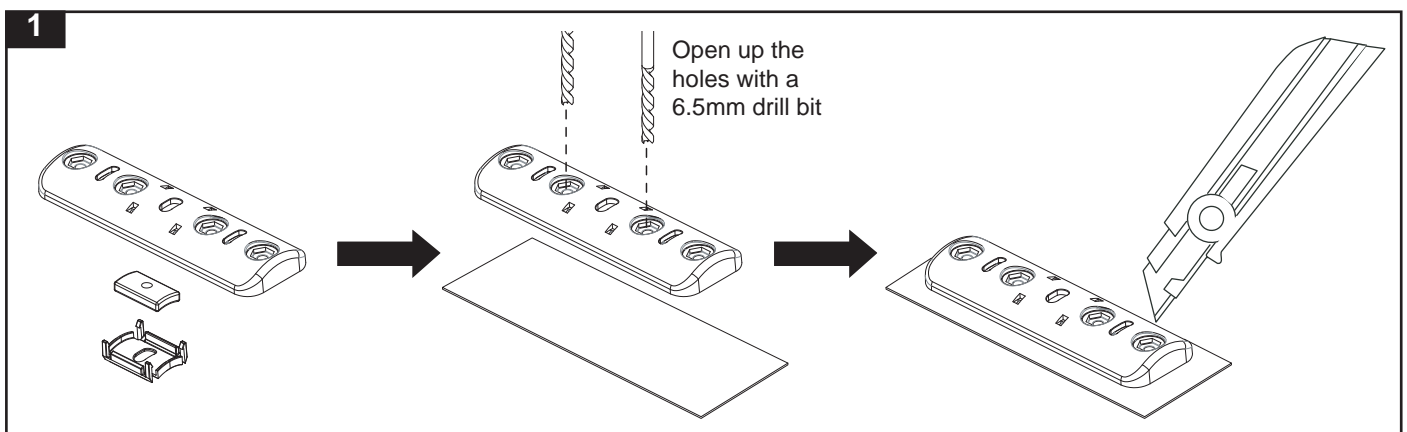


Note: Legs and Crossbars are sold separate. Be sure to obtain correct kits for your vehicle.

Tools Required: 10mm socket wrench.
Drill with 6.5mm drill bit
Knife or blade.

Butyl mastic.
Drill stop.

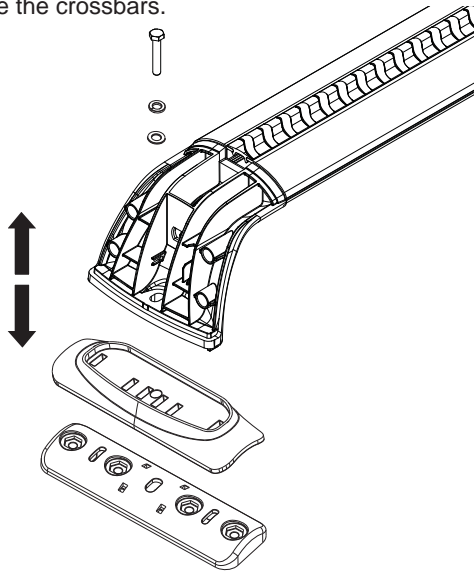
Instructions



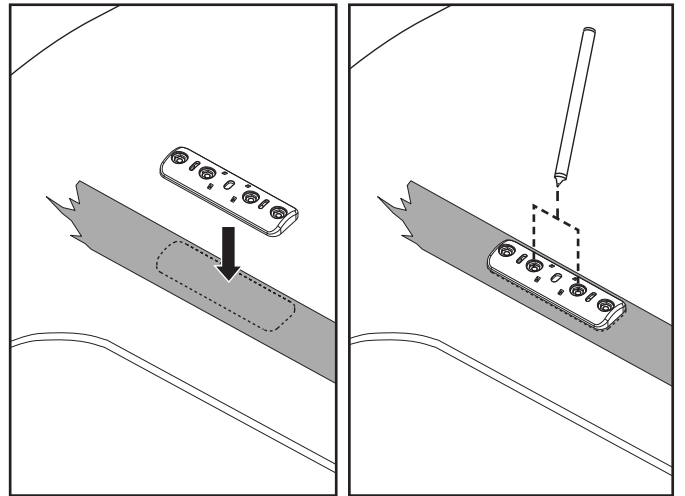


RCP54-BK RFMC2 Kit

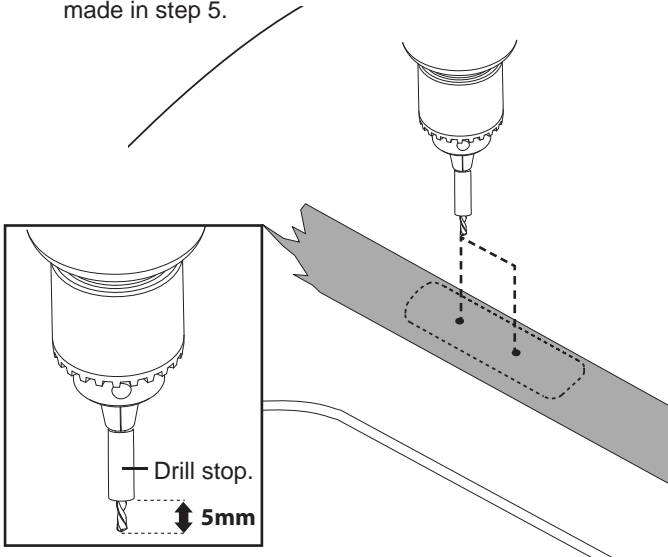
4 Disassemble the crossbars.



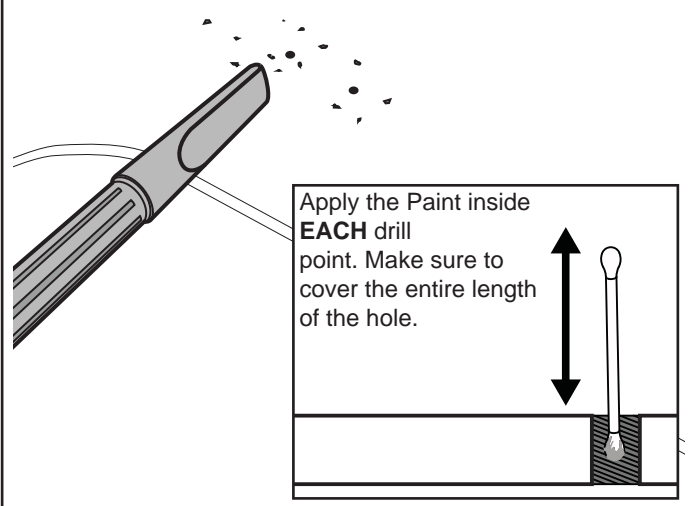
5 Drop the fixed pad in place over the marks made in step 3. Mark the two centre holes of the pad onto the tape below.



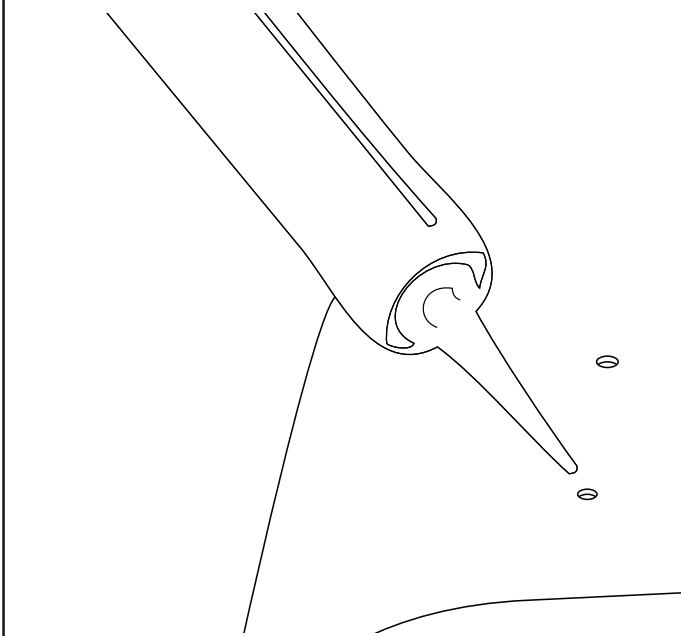
6 Using a 6.5mm drill bit, drill through the references made in step 5.



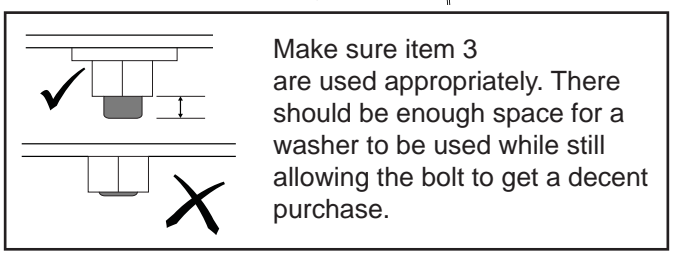
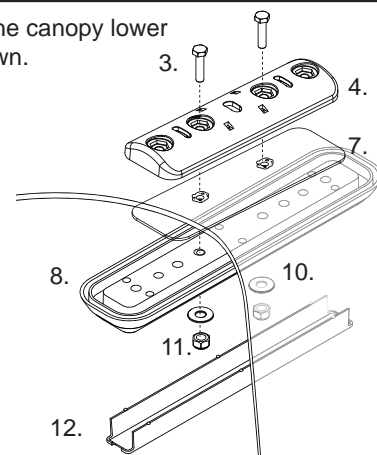
7 Remove the tape. Vacuum away any swarf from the roof. Using a cold galvanising paint, cover any exposed surfaces.



7 Apply butyl mastic to the drilled holes in the canopy.



8 Assemble the canopy lower pad as shown.



Make sure item 3 are used appropriately. There should be enough space for a washer to be used while still allowing the bolt to get a decent purchase.