



# RHINO-RACK®

## RCP95-BK Leg Supplement

Renault Kangoo Gen3 LWB, Mercedes-Benz W420 LWB  
Citan & LWB T-Class, Nissan Townstar Gen1 LWB

### Carrying Capacity

Check your vehicle owners hand book for vehicle maximum carrying capacity. Please ensure you use the vehicle manufacturer's maximum roof allowance if it is lower than the figure listed in this instruction.

Load must be evenly distributed over the system.

For your vehicle specific fitment rating, refer to the Rhino Rack online load rating calculator.

For Pioneer Load Ratings, refer to the Pioneer Fitting Chart found in Step **4**.

VISIT THE ONLINE  
CALCULATOR FOR  
CURRENT SYSTEM  
LOAD LIMIT DATA



**DYNAMIC 3 CROSS BAR LOAD LIMIT (ON AND OFF ROAD):**  
**\*USE THE VEHICLE MANUFACTURER'S MAXIMUM ROOF ALLOWANCE IF IT IS LOWER THAN THE FIGURE LISTED**

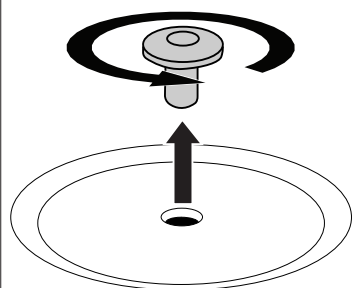
 CARGO	 SYSTEM WEIGHT	 LOAD LIMIT	OR	 Max kg
UP TO <b>92.5 KG</b> <b>204 lbs</b>	<b>+</b> <b>7.5 KG</b> <b>16.5 lbs</b> <b>=</b>	UP TO <b>100 KG</b> <b>220 lbs</b>		<b>*VEHICLE MANUFACTURER'S ROOF LOAD LIMIT</b>

**3 BARS**



**1**

**T40**  
Torx



**NOTE:** Store factory plugs in  
safe place.



#### 3 Crossbars fits:

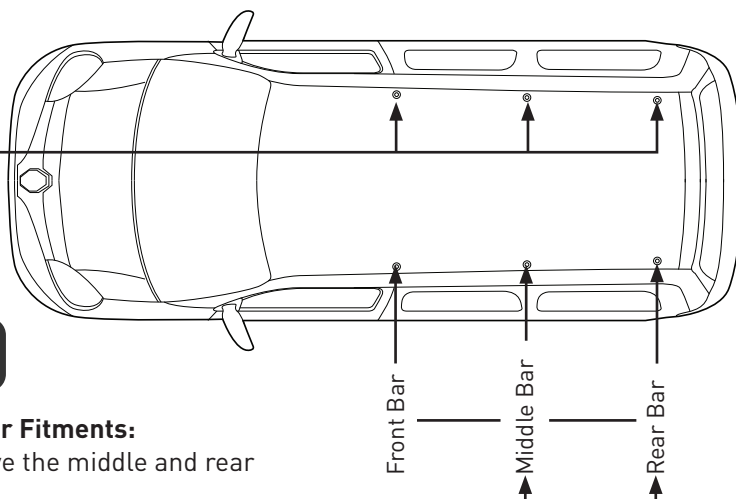
For 3-bar fit remove **all** factory plugs.



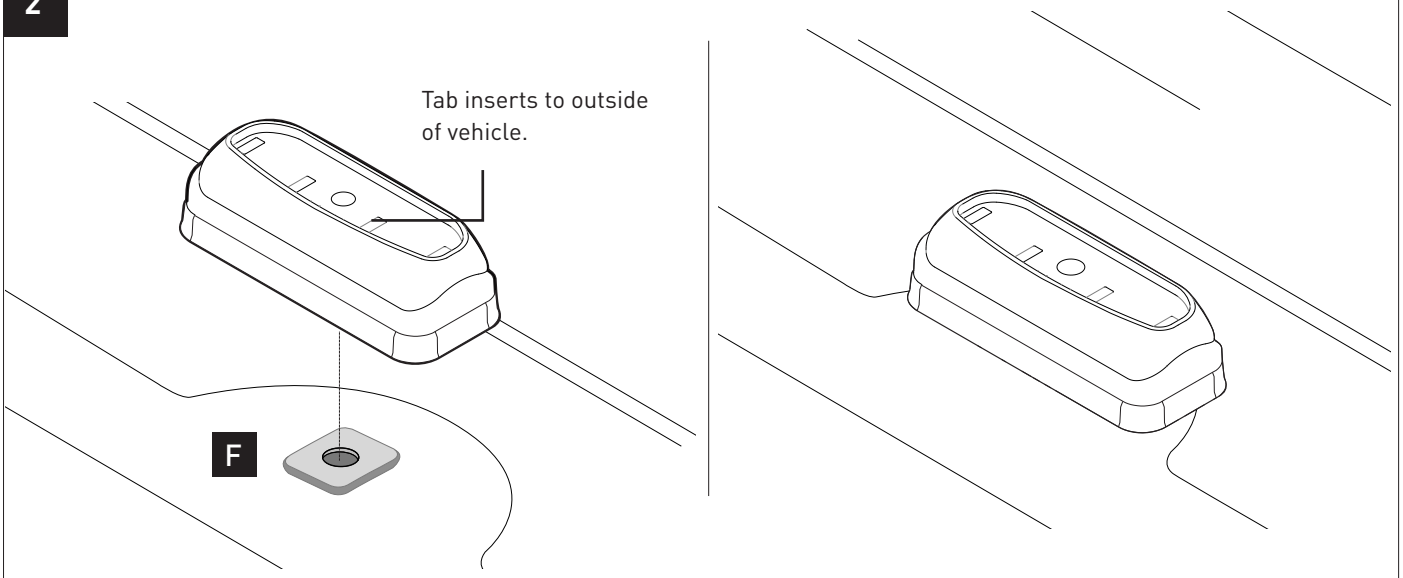
#### For Pioneer Fitments:

Only remove the middle and rear  
plugs.

*(Base kit not required to be installed at  
the front for Pioneer)*

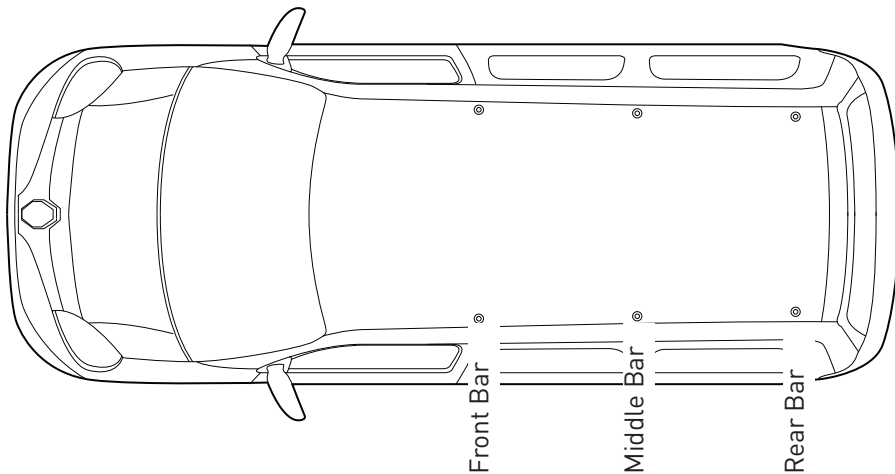


2

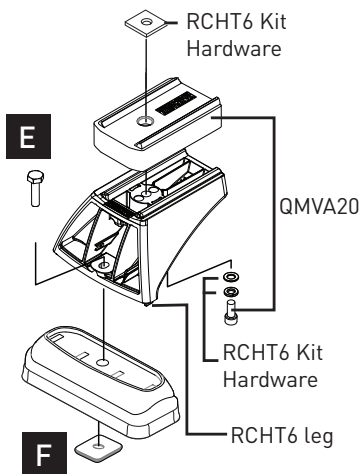


**NOTE:** For Pioneer fitments, not all components in RCP95-BK and RCHT6 will be required.  
For Pioneer install Bases and legs to only the Middle and Rear Roof mounting points.

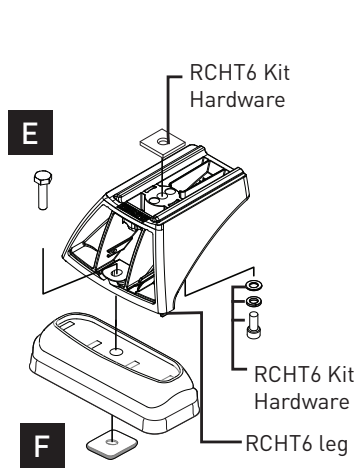
3 Loosely attach legs with spacers, as detailed below, to the Crossbars or Platform before bolting the **RCHT6** legs to the vehicle.



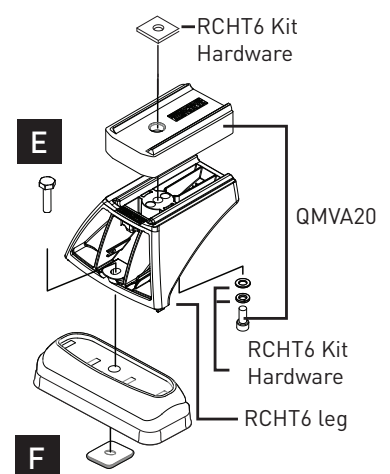
Front Bar



Middle Bar



Rear Bar



**NOTE:** When using the QMVA20 spacer, use the hardware provided in the spacer kit.  
Components **E** & **F** can be found in the RCP-95 kit.



- [illegible]

