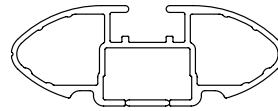




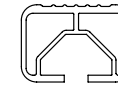
DK428 Rhino-Rack VA, Euro & HD crossbar instruction

CONTROLLED

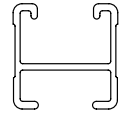
IDENTIFICATION CHART



VA crossbar



EURO crossbar



HD crossbar

Document No: **R721**

Issue No: **2**

Issue Date: **11 Dec 2017**

Prepared by: Craig Jones

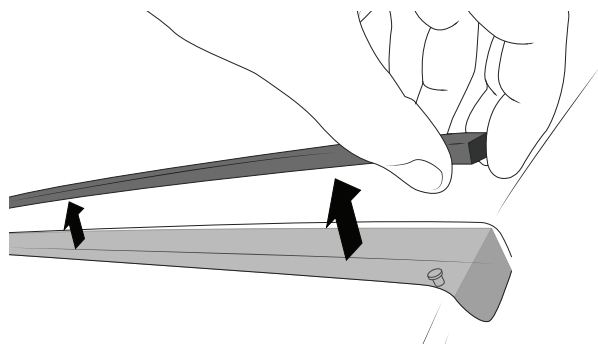
Authorised by: Chris Murty

Vehicle	Date	Crossbar	FRONT CROSSBAR						REAR CROSSBAR					
			Pad	M8 Stud length (mm)	M6 Screw length (mm)	Measurement strip length per side	Measurement strip length per side	Measurement Distance (x)	Pad	M8 Stud length (mm)	M6 Screw length (mm)	Measurement strip length per side	Measurement strip length per side	Measurement Distance (x)
Mitsubishi Triton (MQ) Double Cab	15-	1260mm	M473	30	45	143mm	N/A	934mm / 36,25/32"	M473	30	45	103mm	N/A	854mm / 33,5/8"
Mitsubishi L200 (MQ) Double Cab (EUR/UK/Asia)	15-	1260mm	M473	30	45	143mm	N/A	934mm / 36,25/32"	M473	30	45	103mm	N/A	854mm / 33,5/8"
Mitsubishi L200 (MQ) Double Cab (South America)	16-	1260mm	M473	30	45	143mm	N/A	934mm / 36,25/32"	M473	30	45	103mm	N/A	854mm / 33,5/8"



Tools Required; Tape measure, Marking pen, Drill, Ø12.5mm or ½” Drill bit.

- 1** Move to the rear of the vehicle and locate the end of the roof ditch mould. Carefully lift & unclip the roof ditch mould from the rear then move towards the front unclipping along the way.



- 2** Lay the roof ditch mould on the roof adjacent with the roof ditch itself as shown in Figure 1. Mark the centre of the roof ditch mould in line with the threaded mounting points found in the roof ditch. Use the measurements in Figure 2 as a guide.

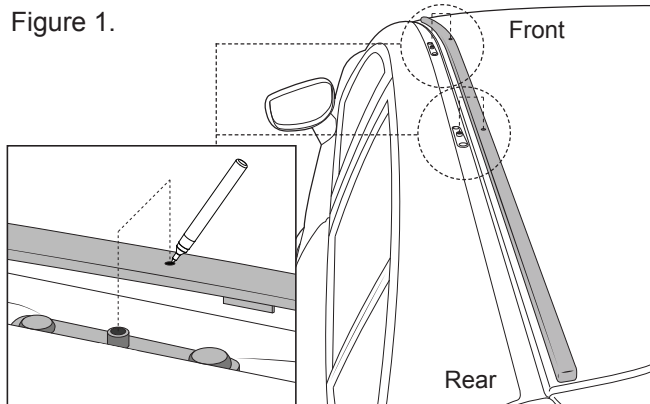
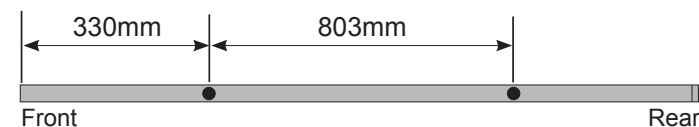
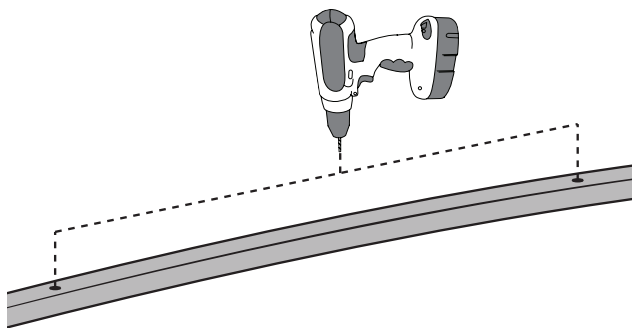


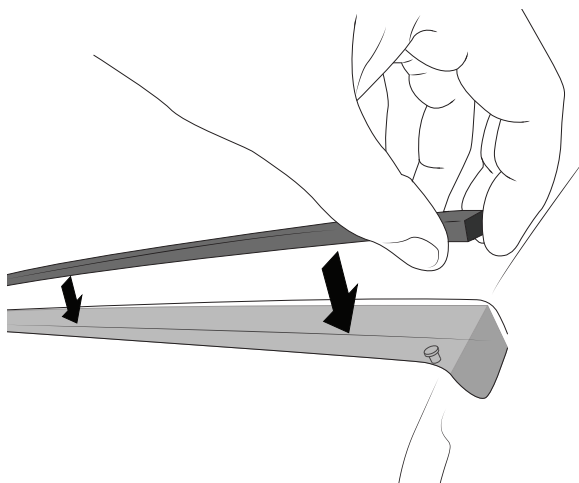
Figure 2.



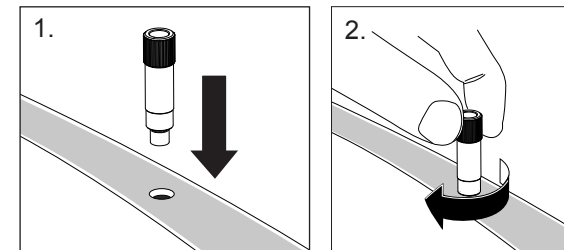
- 3** With the roof ditch mould now marked, use a 12.5mm or ½” drill bit and carefully drill two holes in each roof ditch mould.



- 4** Clip the roof ditch mould back into the roof. **Repeat previous steps for opposite side of the vehicle.**



- 5** Insert the M8 threaded studs through the holes then fasten to the vehicles mounting points, finger tighten.



Tighten 3-4 Nm while visually watching the roof panel. Over tightening can damage the roof of the vehicle.

