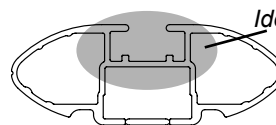




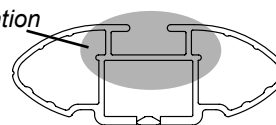
# DK389 Rhino-Rack VA, DA, Euro & HD crossbar instruction

**CONTROLLED**

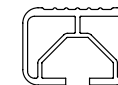
## IDENTIFICATION CHART



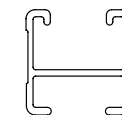
VA crossbar



DA crossbar



EURO crossbar



HD crossbar

Document No: **R390**

Issue No: **2**

Issue Date: **21 Nov 2014**

Prepared by Kayle Everett

Authorised by Chris Murty

			FRONT CROSSBAR					REAR CROSSBAR						
Vehicle	Date	Crossbar	Front Right Pad/ Clamp	Front Left Pad/ Clamp	Measurement strip length per side	Measurement strip length per side	Measurement Distance ( x )	Foot plate arrow direction	Rear Right Pad/ Clamp	Rear Left Pad/ Clamp	Measurement strip length per side	Measurement strip length per side	Measurement Distance ( x )	Foot plate arrow direction
Isuzu MU-X 4dr SUV	12/13-	1260mm	M566 SUB0546	M567 SUB0546	182mm	69mm	1012mm / 39,27/32"	OUT	M566 SUB0547	M567 SUB0547	173mm	60mm	994mm / 39,9/64"	OUT
			Pad Arrow OUT						Pad Arrow OUT					



# DK389 Rhino-Rack VA, DA, Euro & HD crossbar instruction

**CONTROLLED**

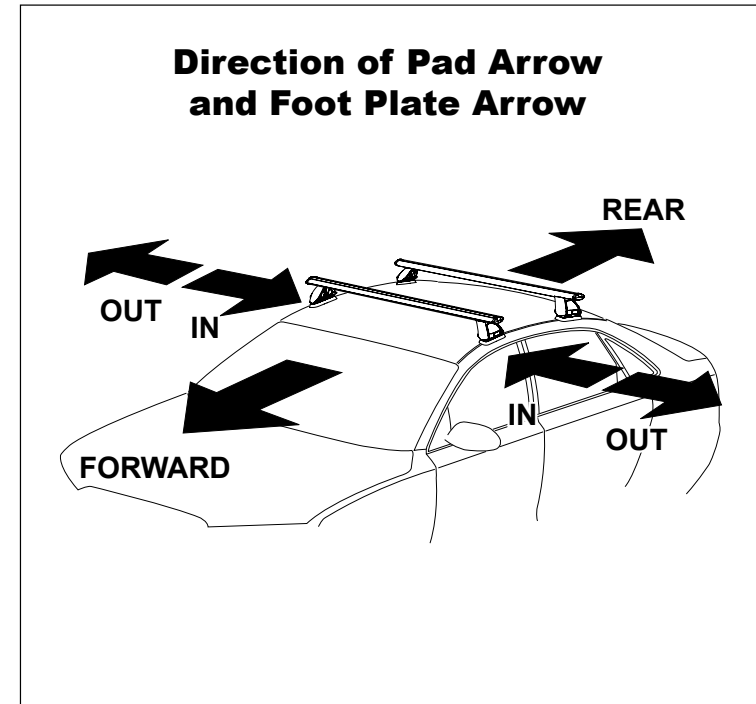
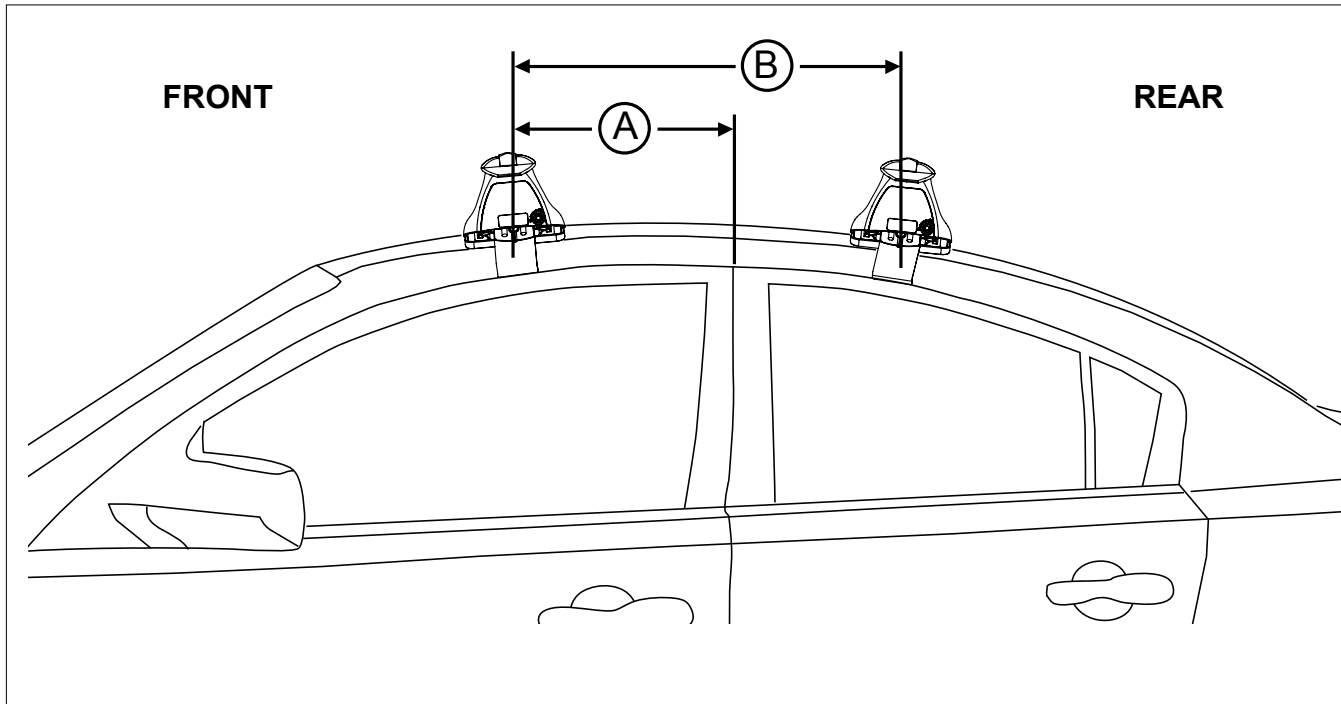
**Measurement A:** CENTRE of door jamb to CENTRE arrow of leg foot plate.

**Measurement B:** CENTRE of Front leg foot plate arrow to CENTRE of Rear leg foot plate arrow.

**Carrying capacity:** Roof rack is rated to 75kg. Please refer to manufacturers handbook for your vehicles maximum roof load capacity. Always use the lower of the two figures.

If your vehicle is not listed on this fitting instruction please refer to your countries Rhino-Rack web site for the latest information.

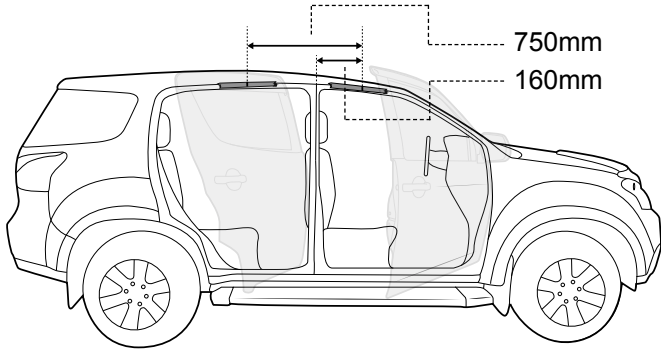
160mm



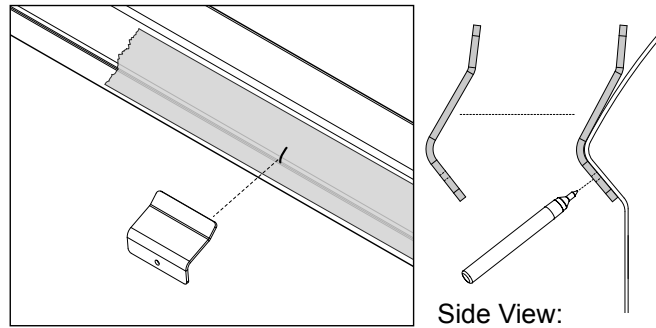
VEHICLE	Date	Measurement A	Measurement B	Load Rating (includes racks 5kg/ 11lbs)
Isuzu MU-X 4dr SUV	12/13-	160mm / 10,1/4"	750mm / 29,17/32"	75kg / 165lbs



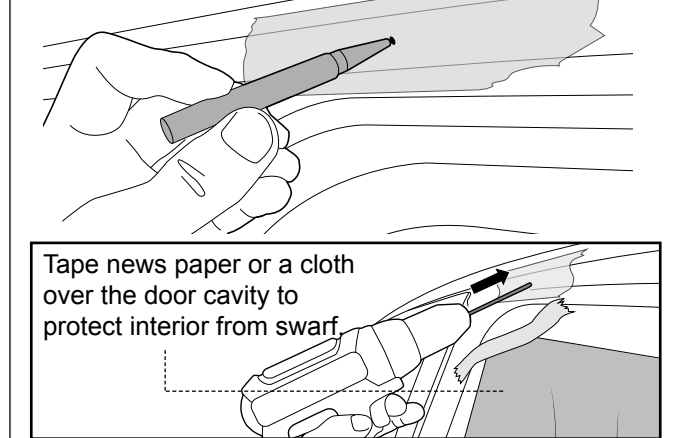
**1** Cover the approximate locations for legs in the door frame with masking tape. From the door jam measure forward 160mm and mark the tape with a pen. From this line measure 750mm back toward the rear and mark the tape situated there.



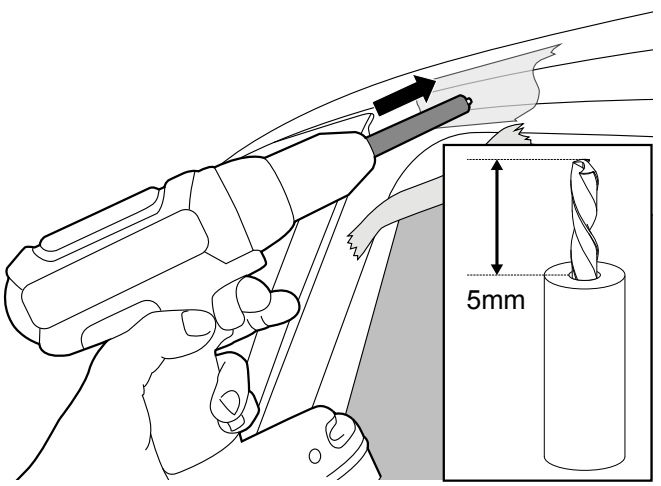
**2** Line the Drilling template up with the markings made previously. The hole in the template should be centered on this mark. Allow the contours of the template to sit flush with the vehicle. Spot mark the masking tape underneath the template through the hole.



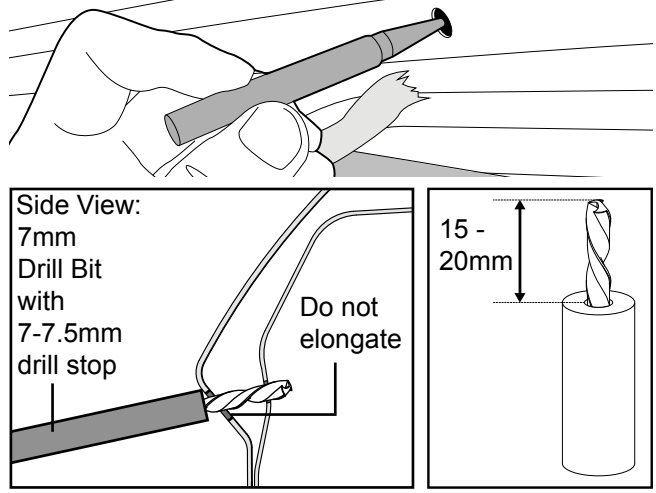
**3** Using a hole punch mark the locations previously referenced. Spot drill these with a 3mm drill bit.



**4** Use a 7mm drill bit with a drill stop. Set the the usable length of the drill bit to 5mm. Drill through the outer skin using the spot marks made previously. Complete for both sides.



**5 Rear Only:** With a hole punch mark the inner skin of the vehicle. Drill through with a 3mm bit then drill through using a 7mm bit with a drill stop. Use cold galvanising paint on both inner and outer panel holes.



**6** Using the rivet nut installation tool, fix the M5 rivet nuts into the galvanised holes in the vehicle.

