



RHINO-RACK®

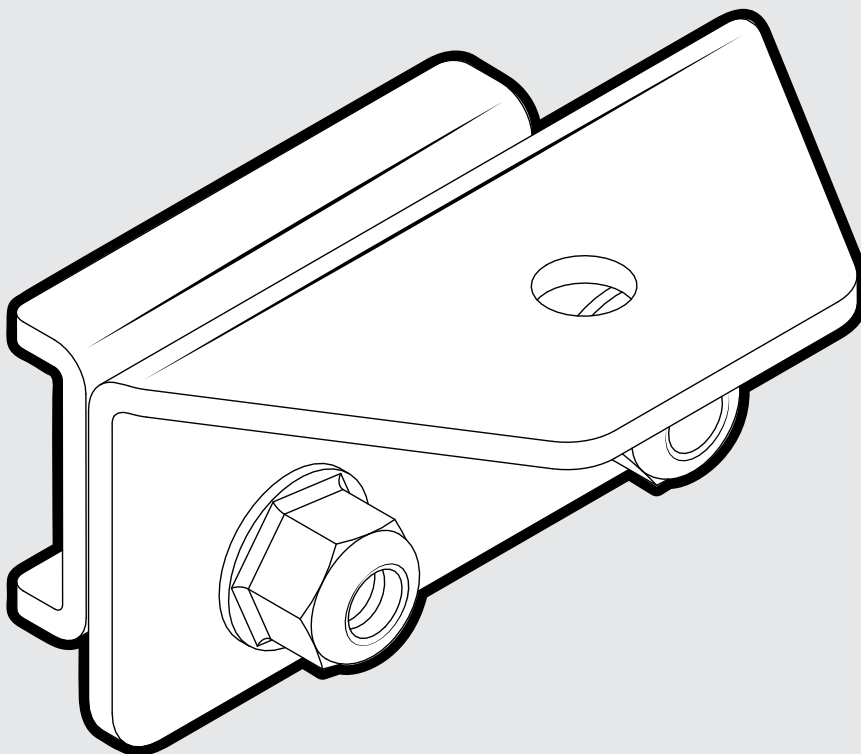
GWM TANK 300 Gen 1, Raised Rails

RCP92-BK

Important:

1. Check the Rhino-Rack website to ensure you have the latest issue of these instructions.
2. Please refer to your fitting instruction to ensure that the roof racks are installed in the correct locations.
3. Check the contents of kit before commencing fitment and report any discrepancies.
4. Place these instructions in the vehicle's glove box after installation is complete.
5. These instructions must be followed for warranty to be upheld.

Fit Time: 1 hour

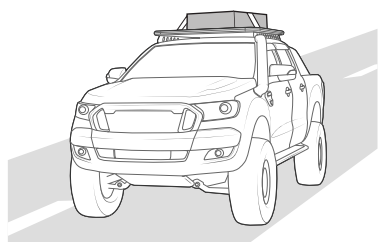


RHINORACK.COM

Doc. No: 520-RFI-00207

Issue No: 02

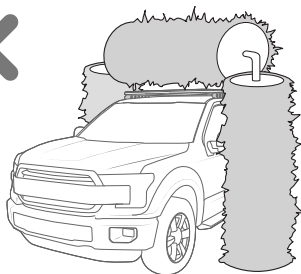
Issue Date: 01/05/2025



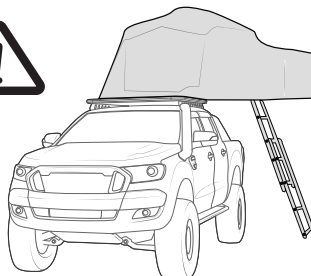
Exercise extreme care when transporting wind-resistant loads. Special consideration must be taken when cornering and braking.



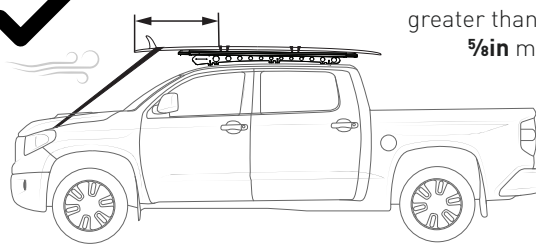
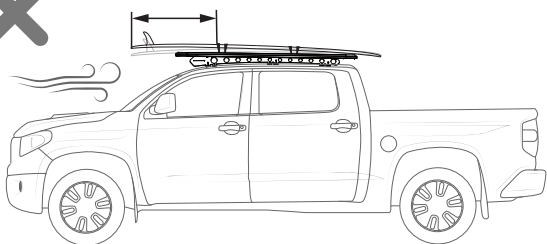
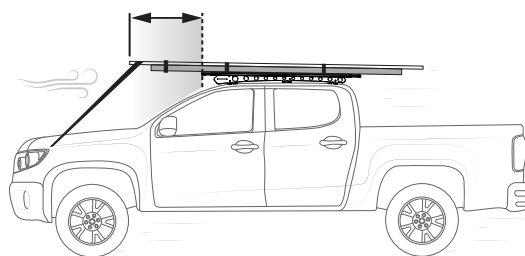
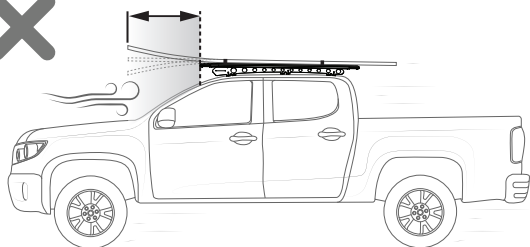
Off-road conditions can be much more rigorous. Extreme care must be taken on any driven path that does not contain a surface protection layer (tar/bitumen).



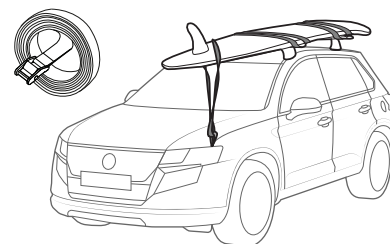
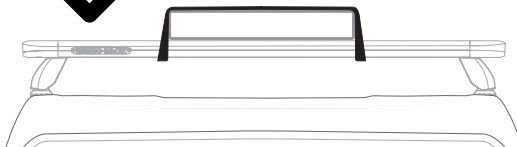
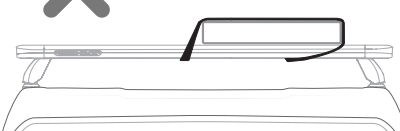
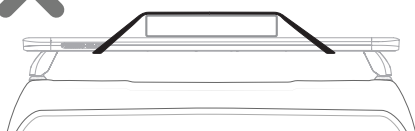
Racks must be removed when vehicle is put through an automatic car wash.



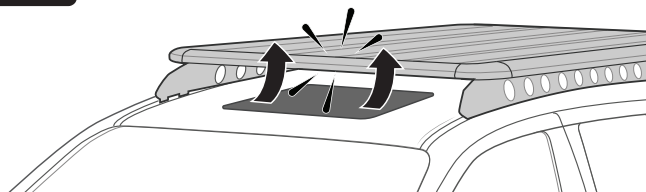
Ensure Ladder is well supported on the ground to support tent. Take extreme caution when climbing heights above 1.2m/4ft.



Surfboard Overhang greater than **600mm / 23 5/8in** must be tied to the bonnet

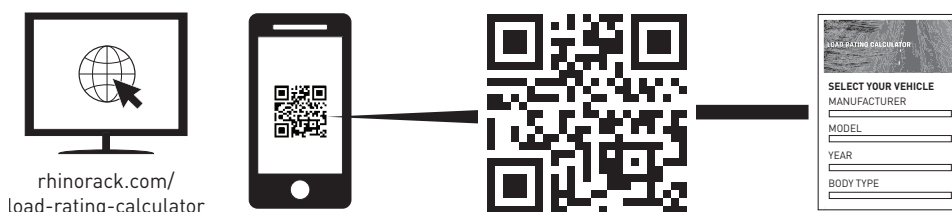


Use only non-stretch fastening ropes or straps to attach cargo to roof racks



Carrying Capacity

Check the website and the vehicle owners hand book for your vehicle manufacturer's maximum carrying capacity. Load must be evenly distributed over the system.



Cargo Load Limit

Total permissible weight allowed on top, and attached to the rack whilst the vehicle is in motion.



System Weight

Total weight of the rack system. (e.g. Crossbars, Backbone, Platform)



Max System Load Capacity

Please ensure you use the vehicle manufacturer's maximum roof allowance if it is lower than the figure listed in the fitting chart/supplement.



Vehicle Manufacturer's Load Limit

Total permissible weight attached to the rack. This is inclusive of the weight of the rack system.

Warning

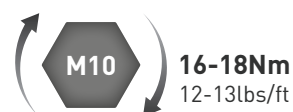
- Check part number or kit is correct for use with your vehicle.
- Do not attempt to fit the rack system to your vehicle unless you fully understand these fitting instructions. Please direct any questions regarding fitting to the dealer from where the roof racks were purchased.
- Always ensure you fasten your load securely.
- Use only non-stretch fastening ropes or straps to attach cargo to your load.

In service maintenance checks

- All bolt connections should be checked after driving a short distance when you first install your roof racks.
- All bolted connections should be checked again at regular intervals (weekly is recommended, depending on road conditions, usage, loads and distances travelled).
- All bolted connections should be checked each time they are re-fitted.
- Off-road conditions are more rigorous. Check all bolted connections and your load more regularly.
- Ensure that your vehicle manufacturer's GVM, and gross axle weights are not exceeded (refer to vehicle owner's manual).

Torque Settings:

Unless stated otherwise in these instructions, all fasteners should be set to the following torque settings:

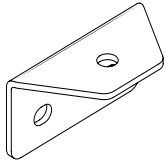


Note for Dealers and Fitters

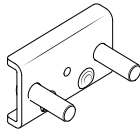
It is your responsibility to ensure these fitting instructions are given to the end user or client. These instructions remain the property of Rhino-Rack Australia Pty. Ltd. and may not be used or changed for any other purpose than intended.

Parts

Mount Bracket

**A** x4

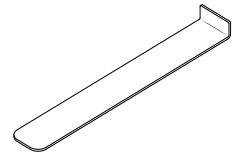
M8 Channel Bolt

**B** x4

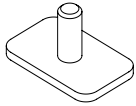
M8 Flanged Head Nut

**C** x12

Trim Tool

**D** x1

T-Bolt

**E** x4

Instructions

**F** x1

TOOLS REQUIRED:

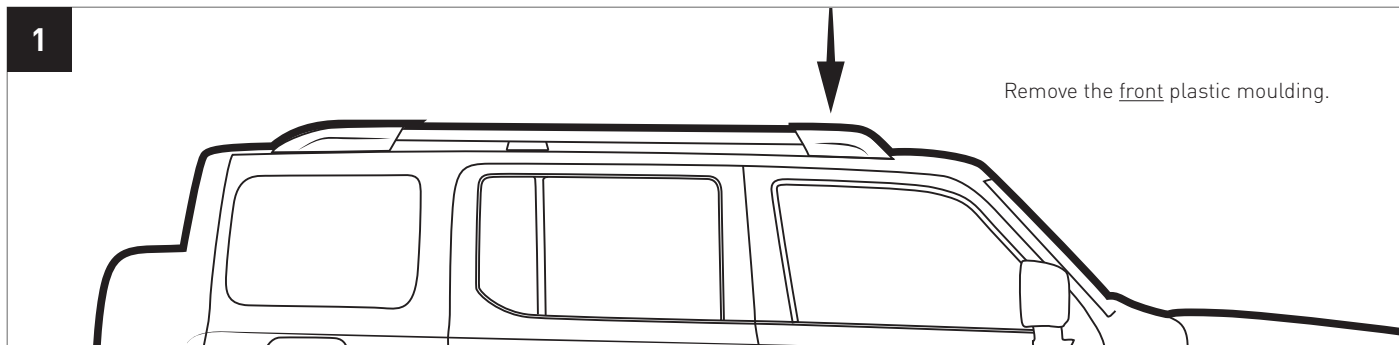
T1 - Tape Measure

T2 - Torque Wrench with **13mm** Socket

T3 - **13mm** Socket Wrench/ Spanner

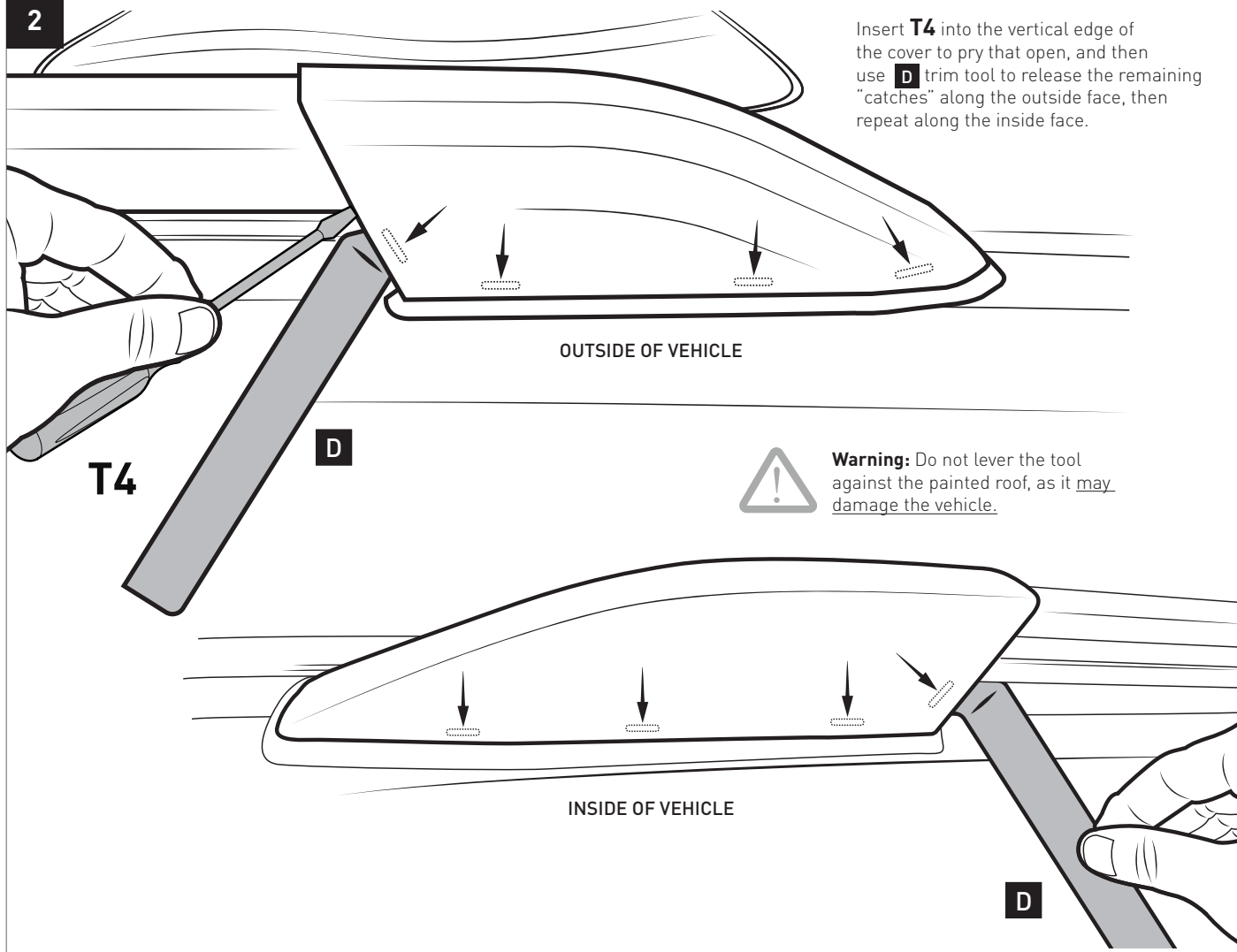
T4 - Small Flat head Screwdriver

1

Remove the front plastic moulding.

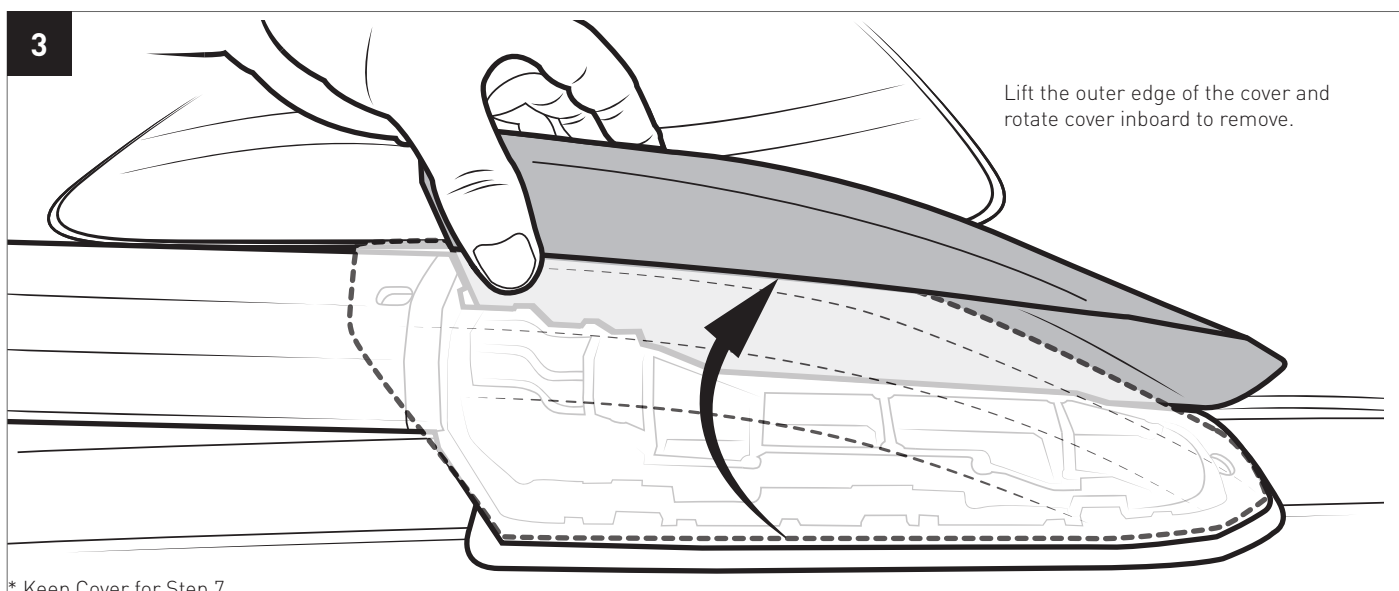
2

Insert **T4** into the vertical edge of the cover to pry that open, and then use **D** trim tool to release the remaining "catches" along the outside face, then repeat along the inside face.

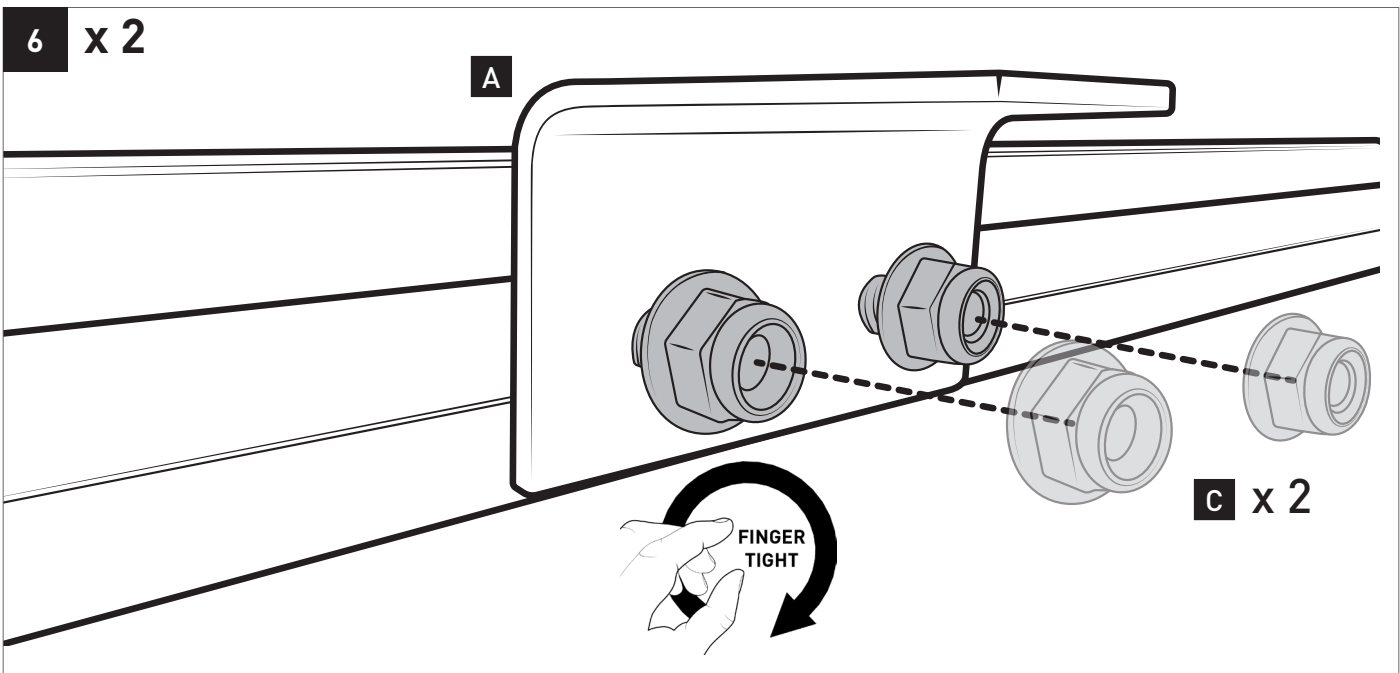
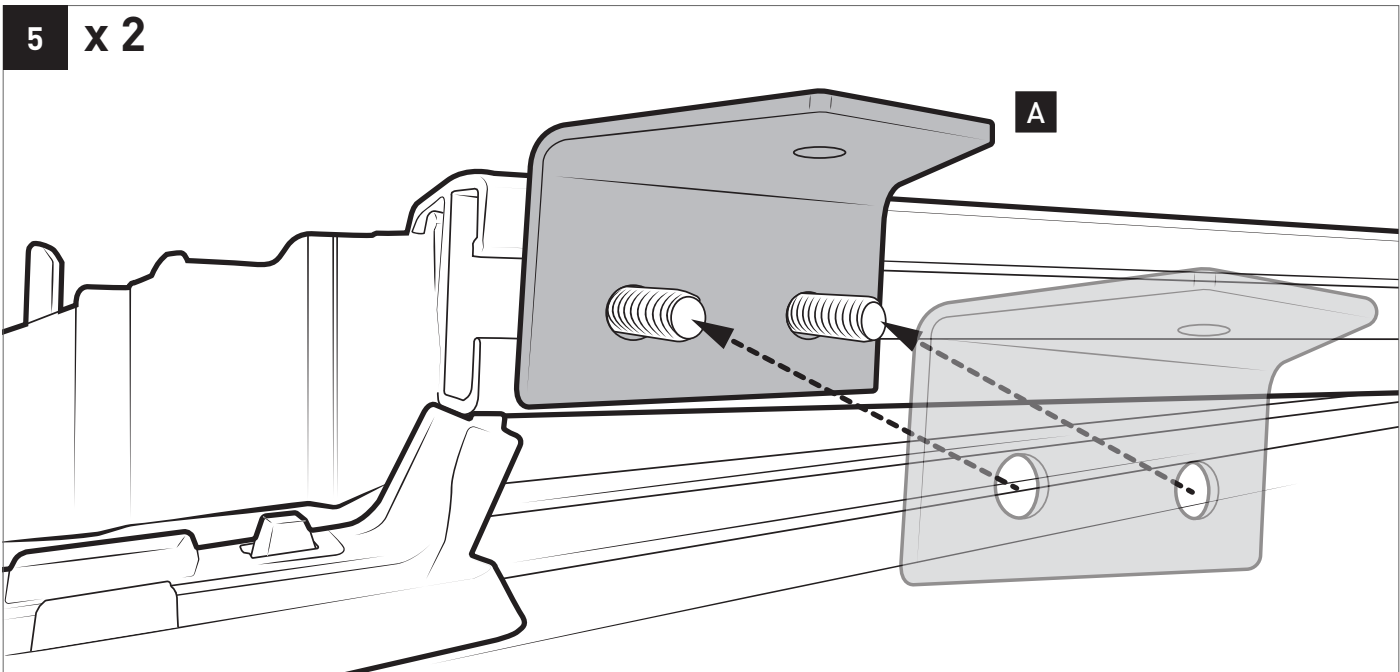
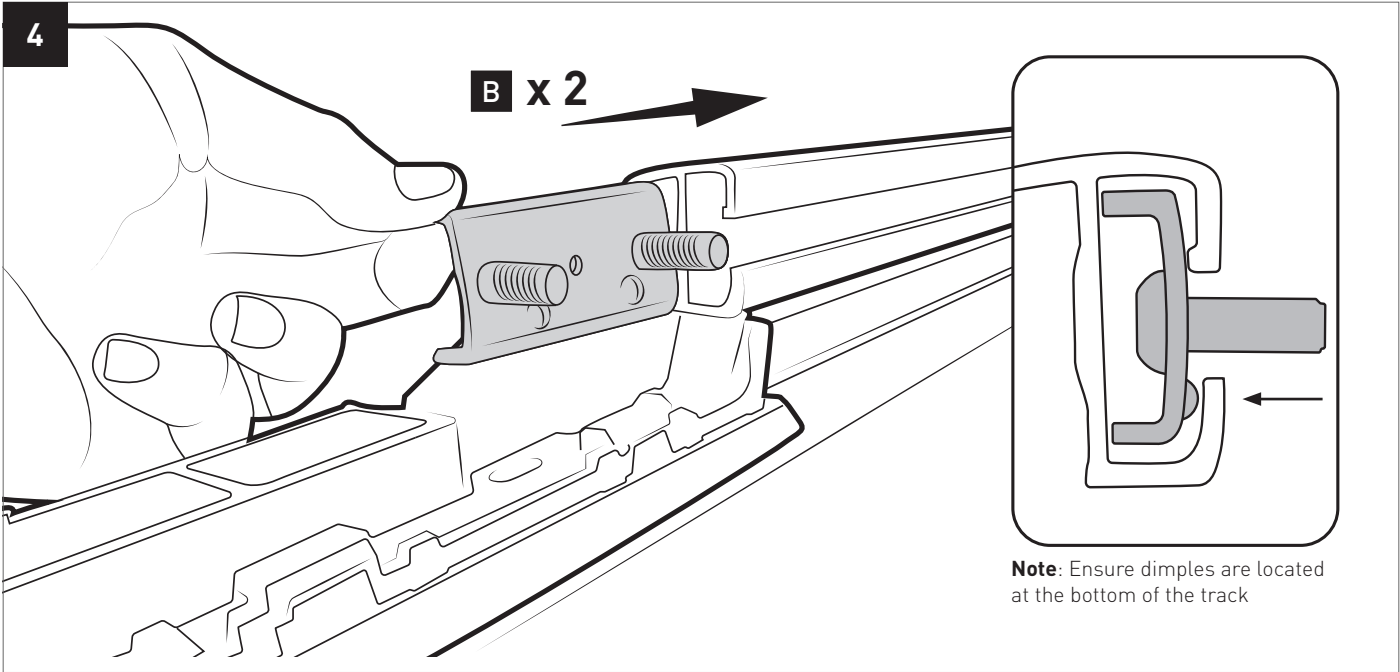


3

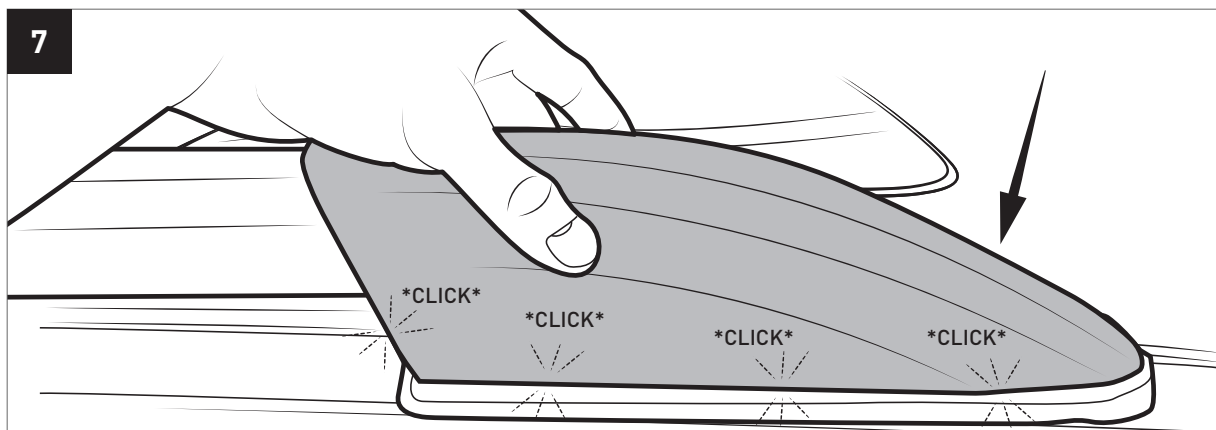
Lift the outer edge of the cover and rotate cover inboard to remove.



* Keep Cover for Step 7

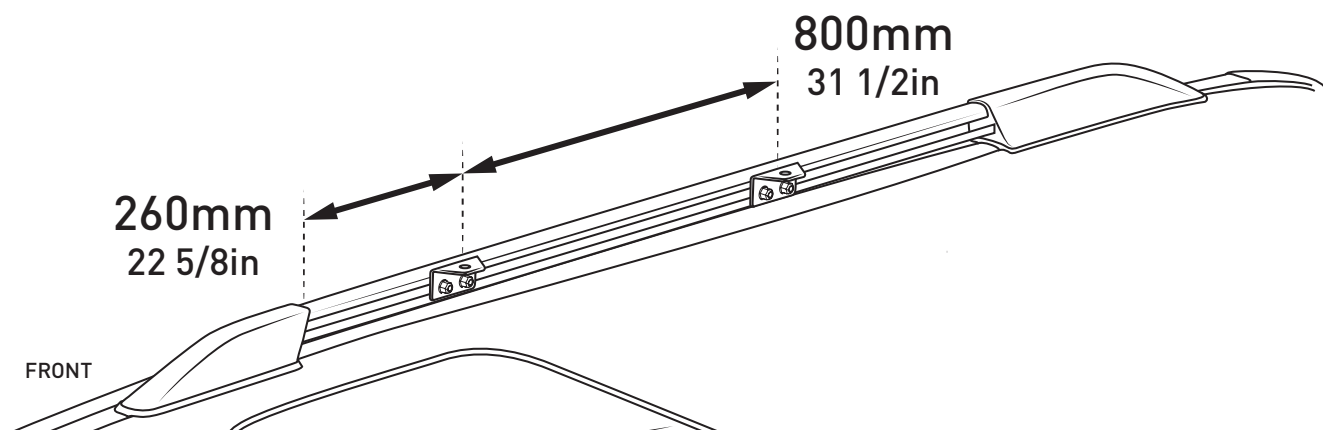


7



8

CROSSBARS (SPORTZ & RECONN-DECK)



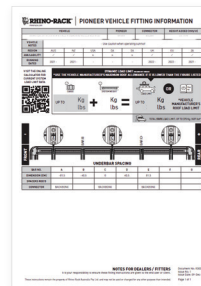
PIONEER PLATFORMS

REFER TO FITTING CHARTS FOR BRACKET SPACING



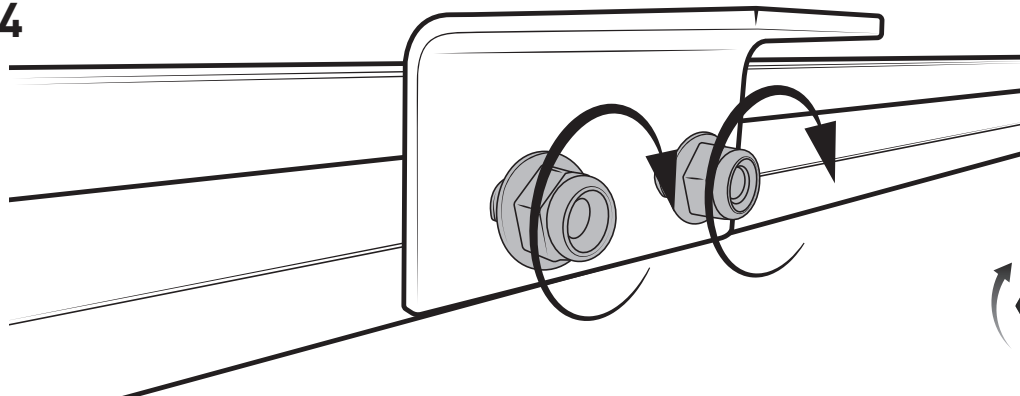
rhinorack.com/roof

1. Complete **Fit my vehicle** journey
2. Select your **Product Solution**
3. Scroll down to '**Product Details**'
4. Select the '**INSTRUCTIONS**' tab to View the Fitting Chart
5. Space your Underbars to the **A, B & C** dimensions provided.



VIEW FITTING CHART
Example only

9 x 4



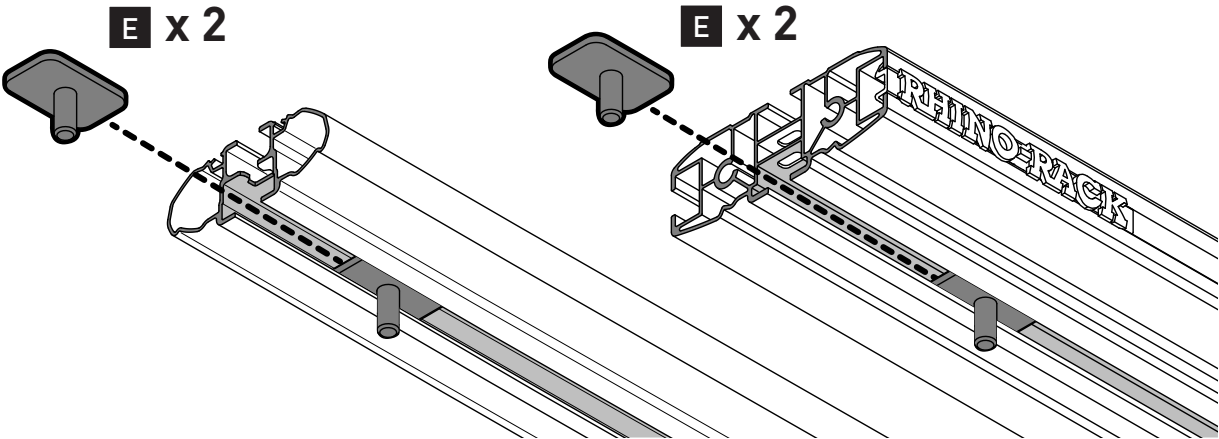
T2
M8
15Nm
11lbs/ft

REPEAT STEPS 1-9 FOR OPPOSITE SIDE

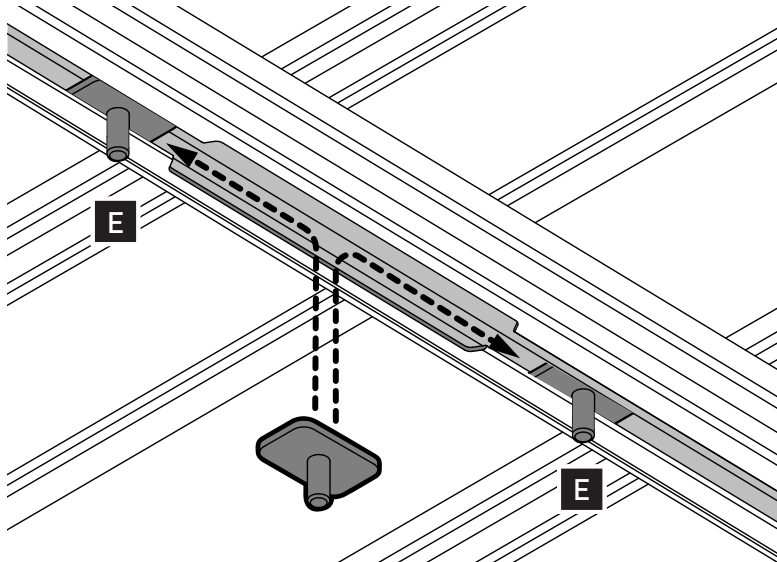
INSTRUCTIONS CONTINUE ON FOLLOWING PAGE

10

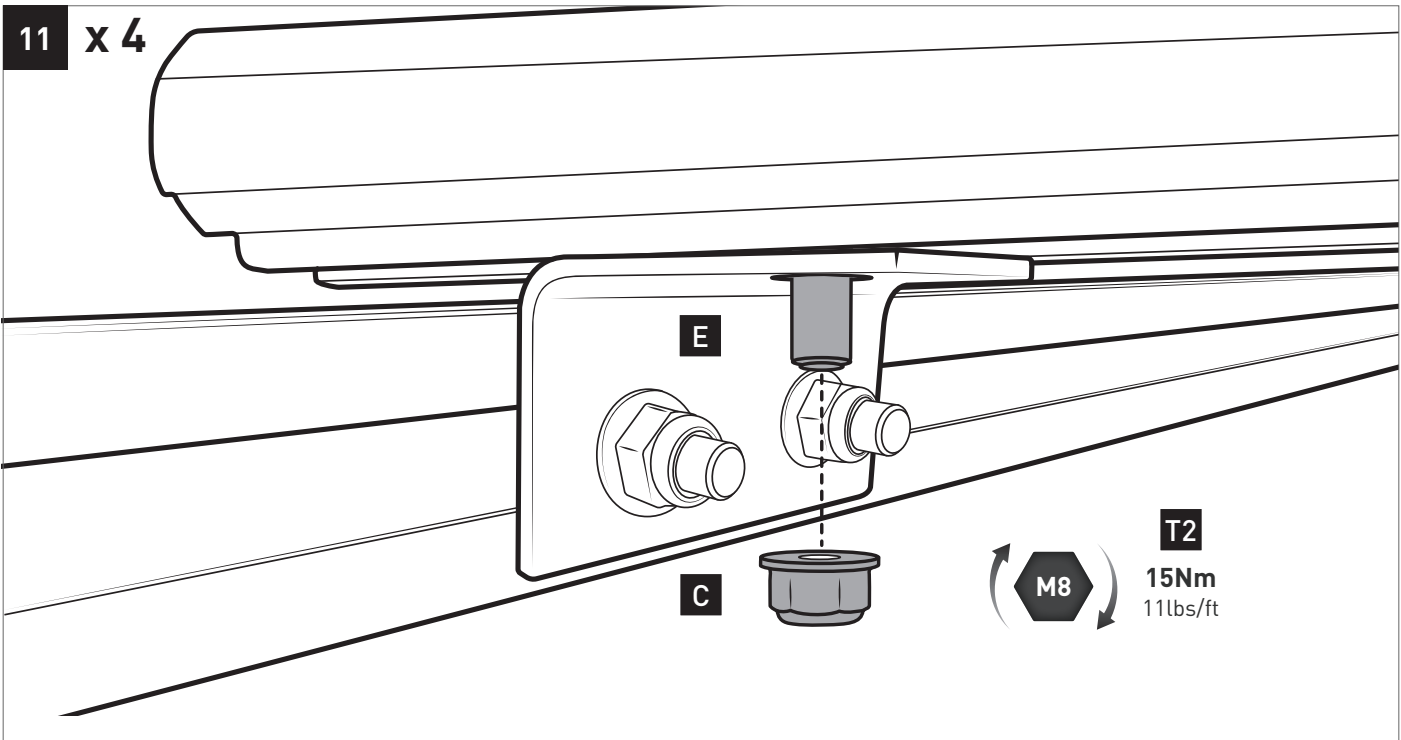
CROSSBARS (SPORTZ & RECONN-DECK)



PIONEER PLATFORMS



11 x 4





RHINO-RACK®

MAKE SPACE FOR ADVENTURE

RHINORACK.COM

Rhino-Rack AUSTRALIA

22A Hanson Pl,
Eastern Creek, NSW, 2766

Rhino-Rack USA

19822 E 22nd Ave,
Aurora, CO, 80011