



RHINO-RACK®

FORD TRANSIT - Base and leg fitting supplement

REFER TO YOUR VEHICLE OWNERS MANUAL & BASE KIT INSTRUCTION FOR THE SYSTEM CARRYING CAPACITY

PARTS/TOOLS REQUIRED:

T2 - Small Flat Blade Screw Driver

T3 - Dremel

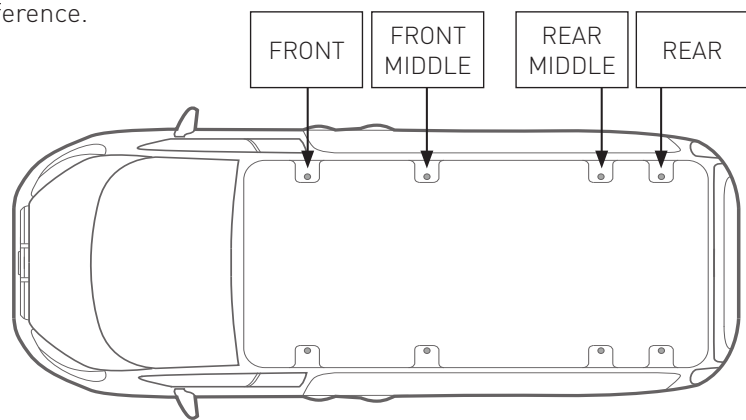
REFER TO RCP47-BK INSTRUCTION FOR BASE KIT PARTS & HARDWARE

A B C D E F G H

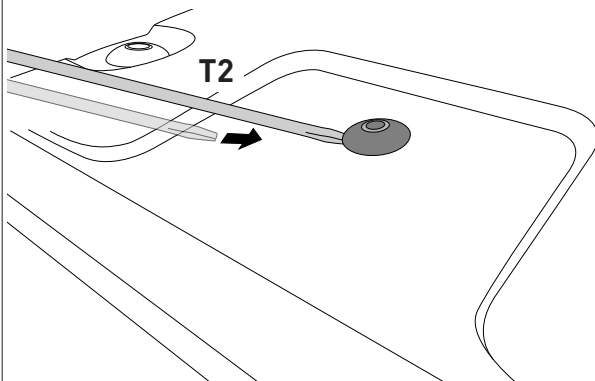
- 1** Select mounting points according to preference.

Ensure that bars will not obstruct roof antennas, vents, sunroofs etc.

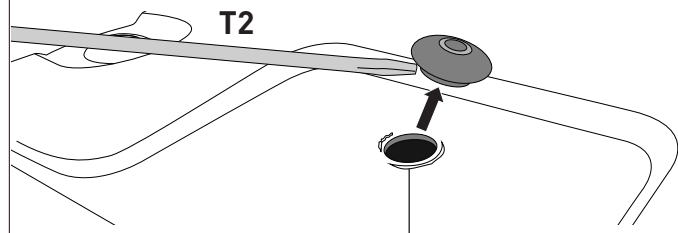
NOTE: SWB vehicles do not have 'Front' mounting points.



- 2** Carefully slide a flat blade screw driver under the selected plugs.

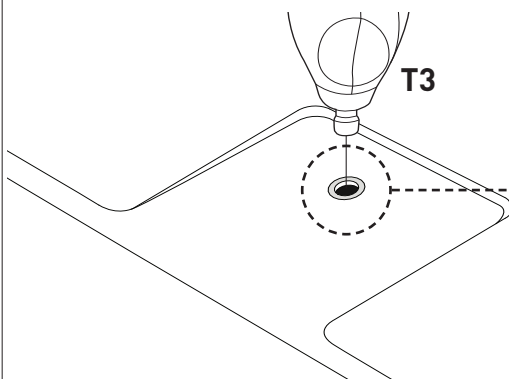


Pry the plastic plugs off (store in a safe place). This will expose the thread below.

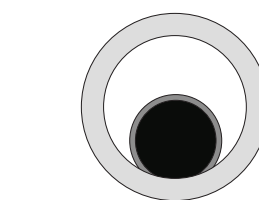


If any material remains, carefully remove with the tip of the screw driver.

- 3** Due to differences in manufacturing, the access hole may be positioned over the thread below. If this is the case, carefully elongate the access hole with a dremel.

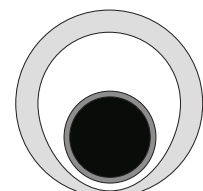


Access to thread is obscured.



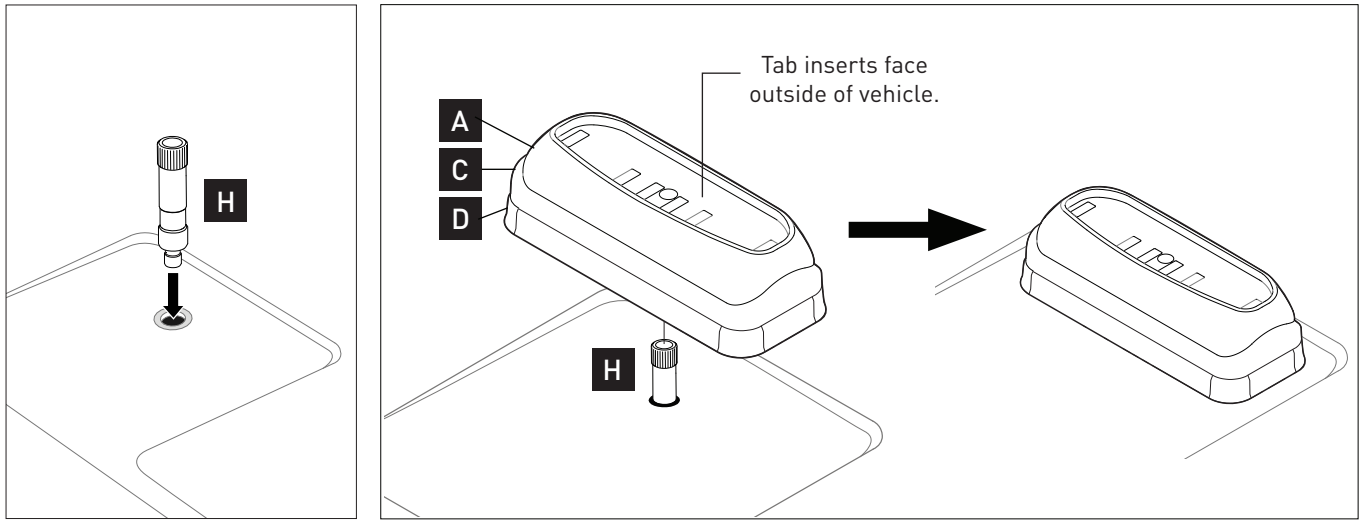
TOP VIEW

Use Dremel to open up access to the thread below.



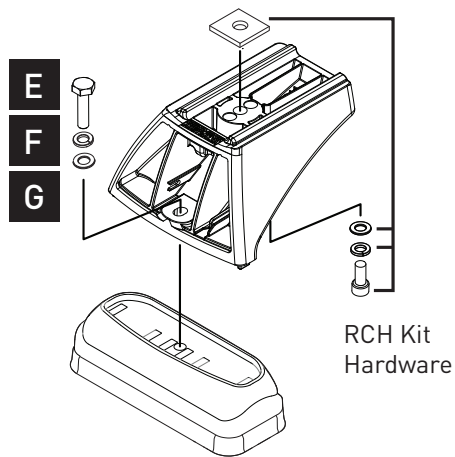
TOP VIEW

3 Parts and hardware in RCP47-BK



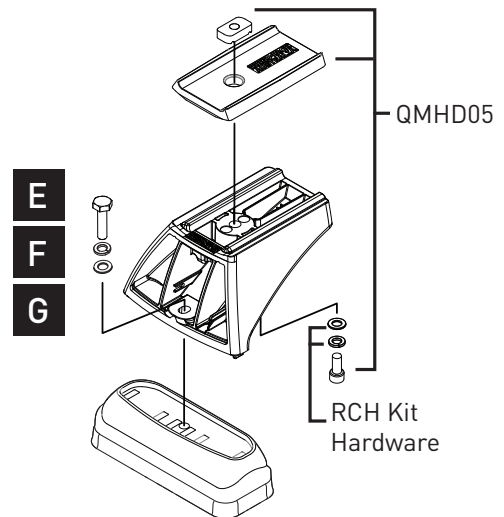
FOR VORTEX BARS

4



FOR HEAVY DUTY BARS

5



NOTES FOR DEALERS/FITTERS

It is your responsibility to ensure these instructions are given to the end user or client.

These instructions remain the property of Rhino-Rack Pty Ltd and may not be used or changed for any purpose other than intended.