



RHINO-RACK

CONTROLLED

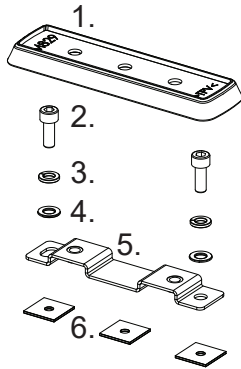
QMFK18

Please refer to 'Fit My Car' on the Rhino-Rack web site for comprehensive instructions on fitting racks to your vehicle.

***Note:** RLT600 Parts as separate.

- Remove roof plugs.
- Apply Butyl Patches to Bracket.
- Fasten Bracket to roof.
- Attach Rubber Skirt to RLT600 base.
- Attach RLT600 Leg Kit as per instructions.

Item	Components	Qty	Part No.
1	Rubber Skirt - High	2	M829
2	M6 x 16mm SHCS	4	B031
3	M6 Spring Washer	4	W004
4	M6 x 12.5mm Flat Washer	4	W003
5	Bracket	2	CA1697
6	Butyl Patch	6	CA1397
7	Instruction	1	R1137



Issue 2: 26 Sept 2018

Document No: R1137



RHINO-RACK

CONTROLLED

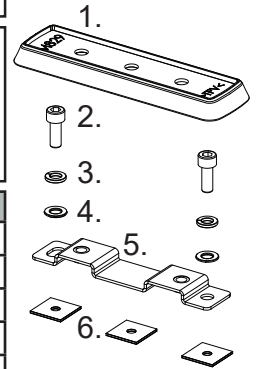
QMFK18

Please refer to 'Fit My Car' on the Rhino-Rack web site for comprehensive instructions on fitting racks to your vehicle.

***Note:** RLT600 Parts as separate.

- Remove roof plugs.
- Apply Butyl Patches to Bracket.
- Fasten Bracket to roof.
- Attach Rubber Skirt to RLT600 base.
- Attach RLT600 Leg Kit as per instructions.

Item	Components	Qty	Part No.
1	Rubber Skirt - High	2	M829
2	M6 x 16mm SHCS	4	B031
3	M6 Spring Washer	4	W004
4	M6 x 12.5mm Flat Washer	4	W003
5	Bracket	2	CA1697
6	Butyl Patch	6	CA1397
7	Instruction	1	R1137



Issue 2: 26 Sept 2018

Document No: R1137



RHINO-RACK

CONTROLLED

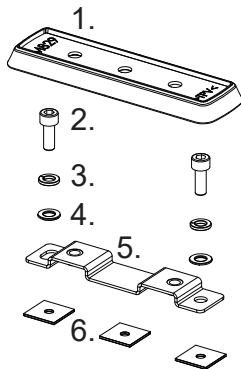
QMFK18

Please refer to 'Fit My Car' on the Rhino-Rack web site for comprehensive instructions on fitting racks to your vehicle.

***Note:** RLT600 Parts as separate.

- Remove roof plugs.
- Apply Butyl Patches to Bracket.
- Fasten Bracket to roof.
- Attach Rubber Skirt to RLT600 base.
- Attach RLT600 Leg Kit as per instructions.

Item	Components	Qty	Part No.
1	Rubber Skirt - High	2	M829
2	M6 x 16mm SHCS	4	B031
3	M6 Spring Washer	4	W004
4	M6 x 12.5mm Flat Washer	4	W003
5	Bracket	2	CA1697
6	Butyl Patch	6	CA1397
7	Instruction	1	R1137



Issue 2: 26 Sept 2018

Document No: R1137



RHINO-RACK

CONTROLLED

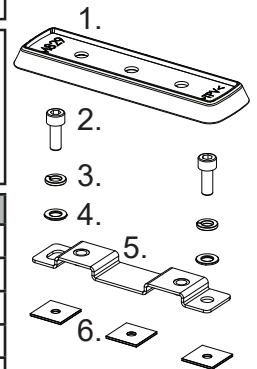
QMFK18

Please refer to 'Fit My Car' on the Rhino-Rack web site for comprehensive instructions on fitting racks to your vehicle.

***Note:** RLT600 Parts as separate.

- Remove roof plugs.
- Apply Butyl Patches to Bracket.
- Fasten Bracket to roof.
- Attach Rubber Skirt to RLT600 base.
- Attach RLT600 Leg Kit as per instructions.

Item	Components	Qty	Part No.
1	Rubber Skirt - High	2	M829
2	M6 x 16mm SHCS	4	B031
3	M6 Spring Washer	4	W004
4	M6 x 12.5mm Flat Washer	4	W003
5	Bracket	2	CA1697
6	Butyl Patch	6	CA1397
7	Instruction	1	R1137



Issue 2: 26 Sept 2018

Document No: R1137



RHINO-RACK

CONTROLLED

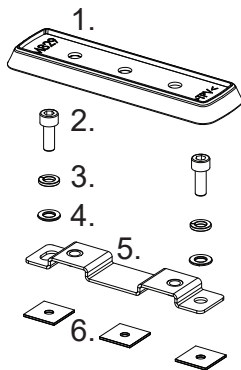
QMFK18

Please refer to 'Fit My Car' on the Rhino-Rack web site for comprehensive instructions on fitting racks to your vehicle.

***Note:** RLT600 Parts as separate.

- Remove roof plugs.
- Apply Butyl Patches to Bracket.
- Fasten Bracket to roof.
- Attach Rubber Skirt to RLT600 base.
- Attach RLT600 Leg Kit as per instructions.

Item	Components	Qty	Part No.
1	Rubber Skirt - High	2	M829
2	M6 x 16mm SHCS	4	B031
3	M6 Spring Washer	4	W004
4	M6 x 12.5mm Flat Washer	4	W003
5	Bracket	2	CA1697
6	Butyl Patch	6	CA1397
7	Instruction	1	R1137



Issue 2: 26 Sept 2018

Document No: R1137



RHINO-RACK

CONTROLLED

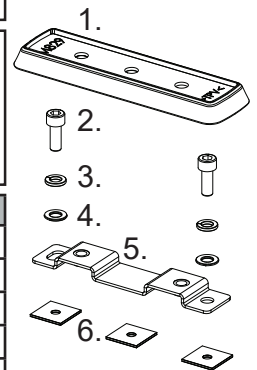
QMFK18

Please refer to 'Fit My Car' on the Rhino-Rack web site for comprehensive instructions on fitting racks to your vehicle.

***Note:** RLT600 Parts as separate.

- Remove roof plugs.
- Apply Butyl Patches to Bracket.
- Fasten Bracket to roof.
- Attach Rubber Skirt to RLT600 base.
- Attach RLT600 Leg Kit as per instructions.

Item	Components	Qty	Part No.
1	Rubber Skirt - High	2	M829
2	M6 x 16mm SHCS	4	B031
3	M6 Spring Washer	4	W004
4	M6 x 12.5mm Flat Washer	4	W003
5	Bracket	2	CA1697
6	Butyl Patch	6	CA1397
7	Instruction	1	R1137



Issue 2: 26 Sept 2018

Document No: R1137