



RHINO-RACK

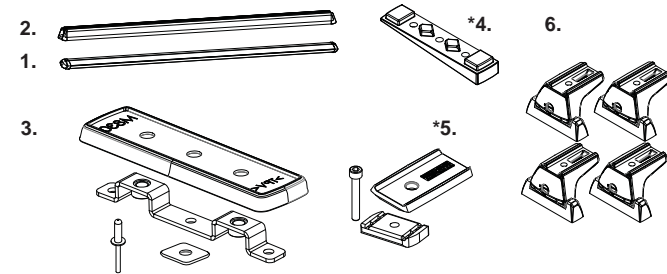
Nissan NP300 QMFK Fitment

Important: Please read these instructions carefully prior to and during installation.
Check the contents of kit before commencing fitment and report any discrepancies.

Parts List

Item	Components	VA Qty	HD	Part No.
1	Vortex Crossbar	2	-	VA126S/B
2	Heavy Duty Crossbars	-	2	RB1250S/B
3	Quick Mount Roof Ditch Bracket	2	2	QMFK14
4*	Quick Mount Base Wedge 10mm	1	1	QMW10
5*	Quick Mount HD Spacer 5mm	-	1	QMHD05
6	Leg and Base Kit	1	1	RLT600
7	Fitting Instructions	1	1	R992

* For use with Crossbars or Pioneer Tray.



Note:

All parts are sold as separate. Ensure you have the required kits to complete your fitment.

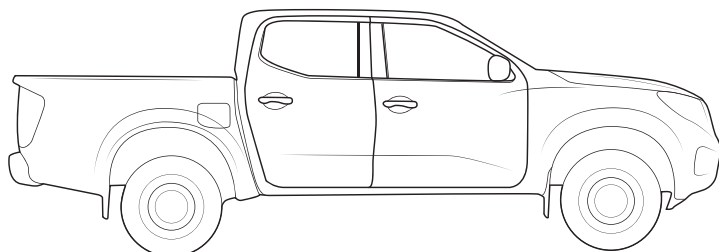
Tools Required:

- Masking tape
- Pneumatic Rivet Gun
- Cotton buds

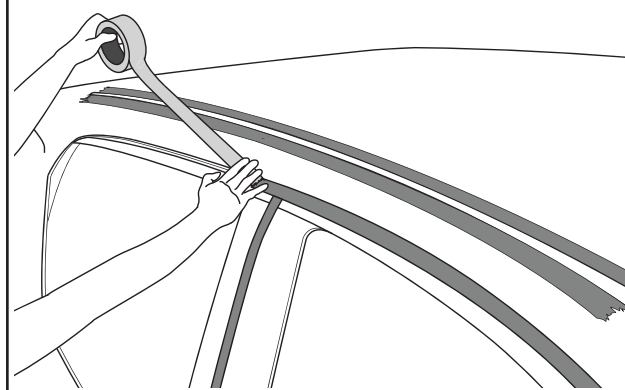
- Blade
- Marking Pen
- Tape measure
- Power Drill with Drill Stop
- Scrape
- Vacuum
- Cold Galvanising Paint
- 4.85mm Drill bit

Instructions

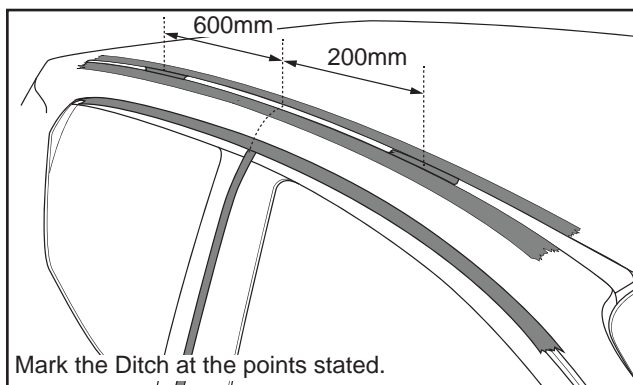
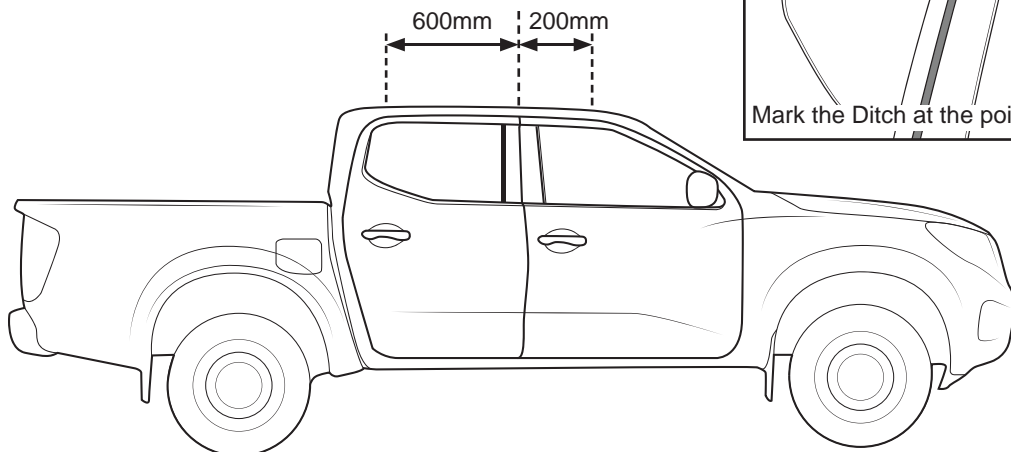
1 Apply Masking Tape on either side of the Ditch Fill on both sides of the vehicle and to the door jamb. This will protect the vehicle from swarf during installation.



Apply Masking Tape to the approximate working area.



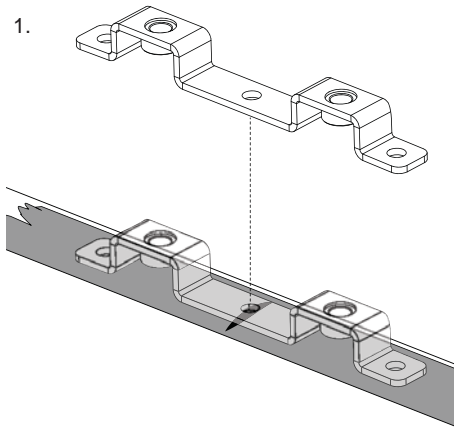
2 Starting from the Door Jamb of the vehicle, measure out the references below. Place a strip of Tape at these points. Create a reference on the Tape at these measurements with a Marker.



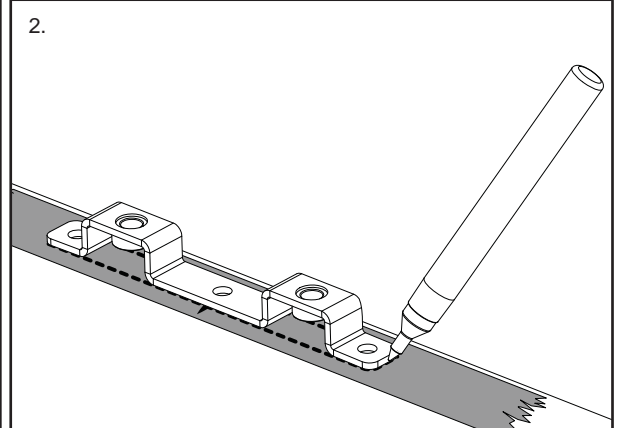
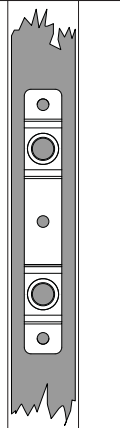


Nissan NP300 QMFK Fitment

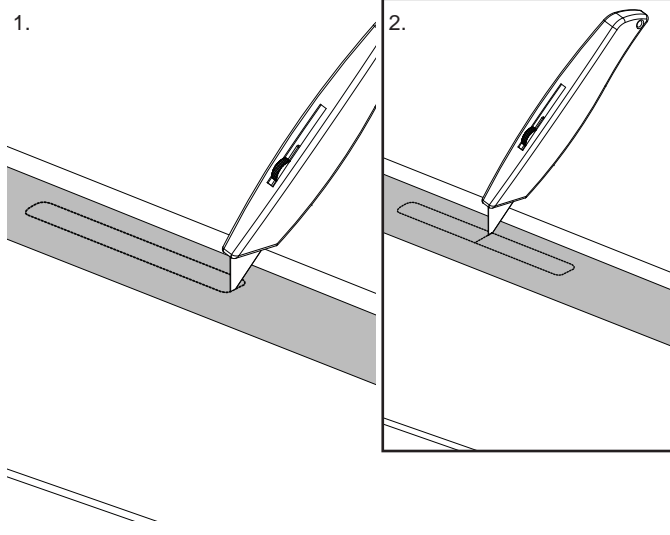
- 3** 1: Place a Bracket at the points previously marked. The Centre hole of the Bracket should sit on this reference. Be sure the Bracket sits evenly in the ditch. 2: Carefully trace the outside edge of the Bracket onto the Tape.



Top View:
Be sure the
Brackets
are parallel
and sitting
evenly in
the Ditch.

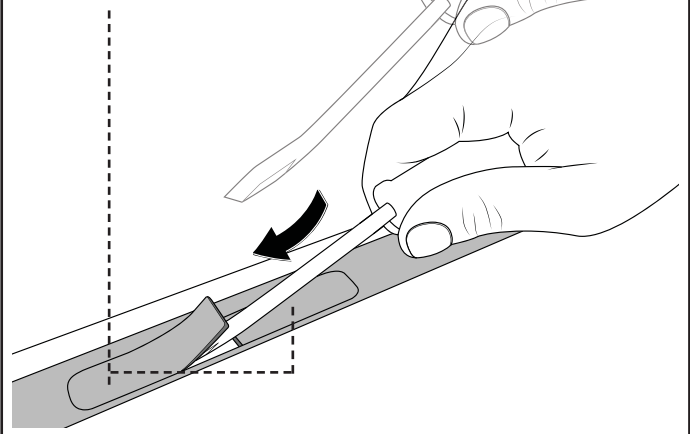


- 4** 1: Using a Blade, cut out the marked area. 2: Cut a line through the approximate centre as shown.

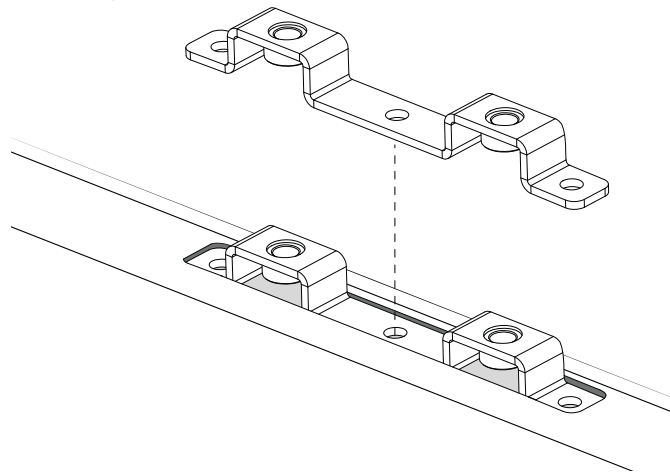


- 5** Starting in the centre of previously cut Fill and using a Scrape, remove the cut sections of Ditch Fill. Remove the Masking Tape on the Fill.

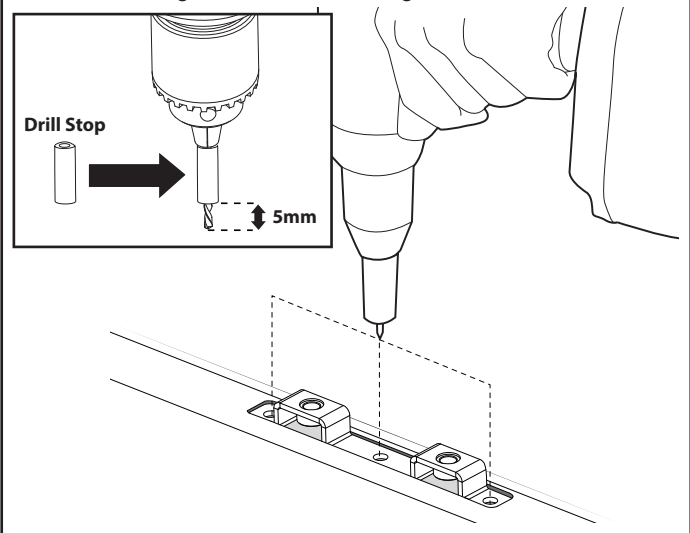
Remove both halves of the cut Ditch Fill.



- 6** Place the Brackets into the holes in the Ditch Fill to test the fit. If the Bracket is not seated correctly, carefully cut away any excess material causing the Bracket to fault. The Bracket should be sitting flush with the metal body work under the Ditch Fill as shown.



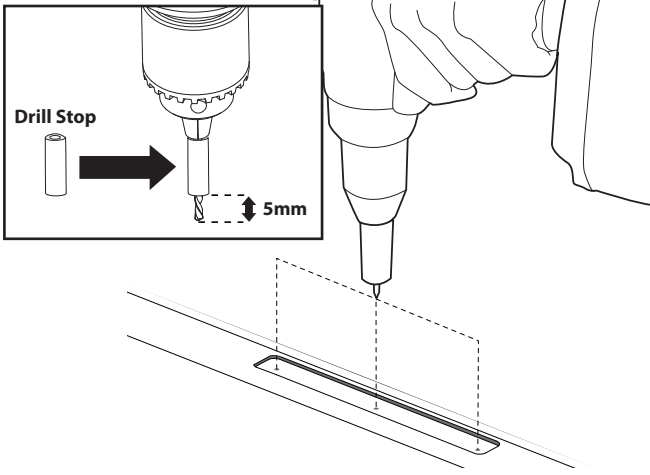
- 7** Using a 4.85mm Drill Bit with a Drill Stop (set to 5mm), spot mark the three rivet holes in the Bracket. Do not drill through the roof at this stage.



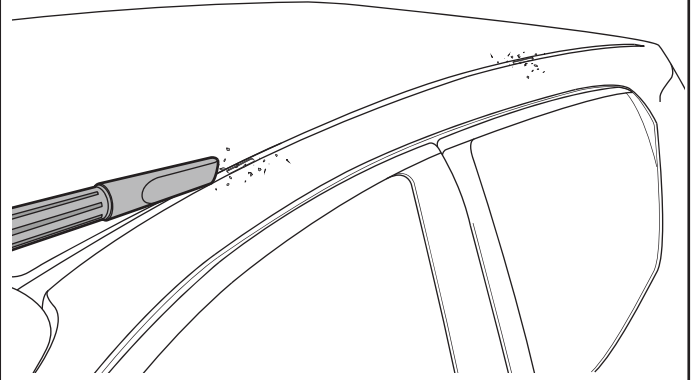


Nissan NP300 QMFK Fitment

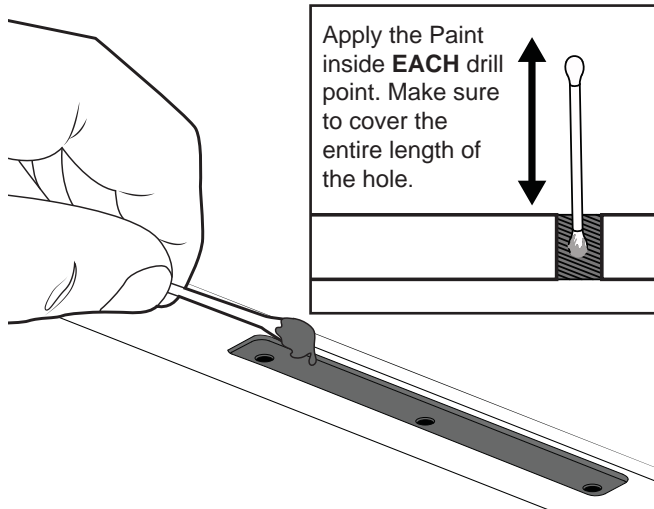
8 Remove the Brackets. Drill through the spot marks using a 4.85mm Drill Bit. **Note: A Drill Stop set to 5mm must be used, air-bags are located 15mm below the front drilling positions.**



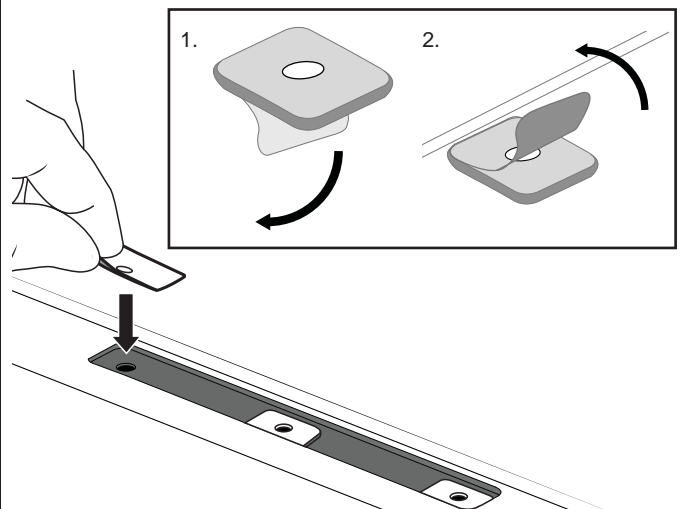
9 Vacuum any loose material from the Ditch Fill and surrounding areas



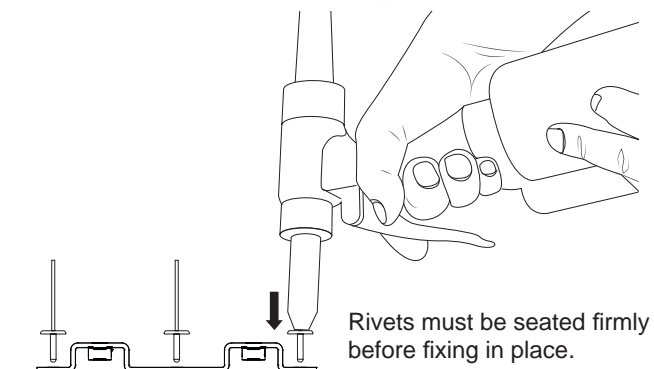
10 Apply Cold Galvanising Paint. Make sure to spread around drilled holes as well as inside. A layer should be put over all exposed bodywork. Allow 10min to dry. Weather conditions may alter drying time.



11 Remove one side of protective tape from the Butyl Patches provided. Place carefully over the exposed threads. Remove the top layer of protective tape from the installed Patches.

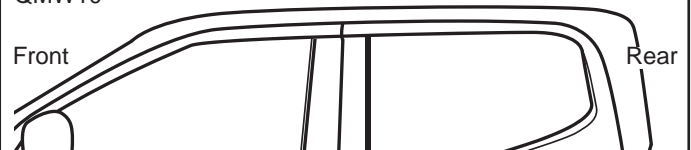
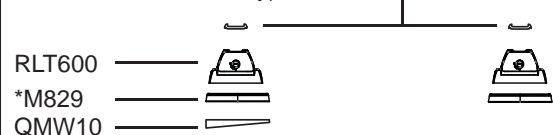


12 Using either a pneumatic or concertina type rivet gun (not a small hand gun), rivet the Base into place. Make sure all Rivets are seated firmly.



13 Install leg kits as per corresponding instructions.

QMHD05 (Heavy Duty Crossbars/ Pioneer only)



***NOTE:** M829 will sit on top of the installed Bracket. The Gasket will cover exposed areas of the Bracket and Ditch Fill.

Rhino-Rack
3 Pike Street, Rydalmere,
NSW 2116, Australia.
(Ph) (02) 9638 4744
(Fax) (02) 9638 4822

Document No: R992
Prepared By: Kayle Everett
Authorised By: Chris Murty

Fit Time: 1 Hour
Issue No: 01
Issue Date: 30/03/16

These instructions remain the property of Rhino-Rack Australia Pty. Ltd. and may not be used or changed for any other purpose than intended.