

MAXTRAX

UNIVERSAL MOUNT PINS
– 2 BOARDS
MANUAL

DESIGNED & TESTED IN THE AUSTRALIAN OUTBACK

UNIVERSAL MOUNT PINS

MTXUMPS17 / MTXUMPS40

COMPONENTS

40MM



17MM



OR

UNIVERSAL PINS

x4



WASHER M8

x4



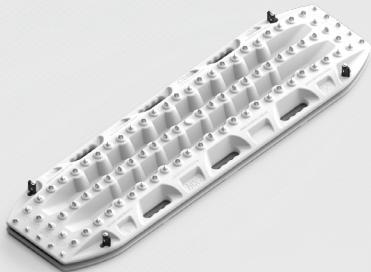
NYLOC NUT M8

x4

MANUAL

2x BOARD COMPATIBILITY

Compatible with up to **two** boards – any orientation of both XTREME and MKII boards



1x BOARD COMPATIBILITY

Suits **pairs** of boards of any Maxtrax model



MANUAL

UNIVERSAL COMPATIBILITY

2 Adjustment stages to suit all Maxtrax boards and combinations



FASTEN BOARDS

Ensure boards are **securely locked** before traveling



MANUAL

SECURITY

A single padlock secures all boards



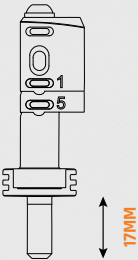
PADLOCK COMPATIBLE

Add a padlock for security
(Maxtrax Matlox padlock sold separately)



FLAT RACK MOUNT INTEGRATION

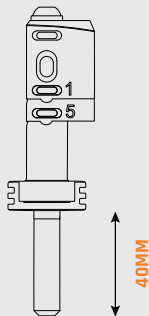
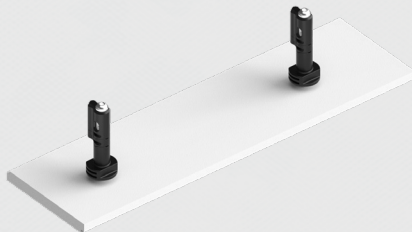
17 mm long pin variant integrates seamlessly
with flat rack systems



MANUAL

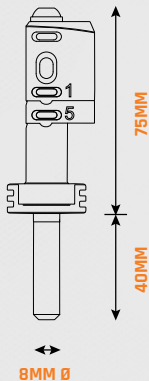
CUSTOM FITMENT

The 40mm pin is designed to facilitate easy integration into custom fitment solutions

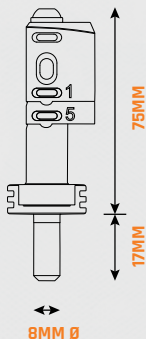


DIMENSIONS

40MM



17MM



MANUAL



FOR MORE
INFORMATION

CARE & MAINTENANCE

The **Universal Mount Pins** are designed to securely fasten **Maxtrax Recovery Boards** in a range of configurations. Due to the nature of off-road travel and outdoor exposure, components may be subject to wear, abrasion, or minor surface damage over time.

To prolong the life of the mounting pins, rinse with fresh water after exposure to mud, sand, or salt environments, and allow them to air dry before storage. Avoid prolonged exposure to direct sunlight and extreme weather conditions when not in use.

SAFETY RECOMMENDATIONS

- Universal Mount Pins are designed to securely hold up to four Maxtrax Recovery Boards (MKII, LITE, or XTREME models).
- All four mounting pins must be used when securing boards for safe transport.
- Installing a padlock through at least one mounting pin may help reduce the risk of theft and prevent rotation of the boards over rough terrain.

WARRANTY

Maxtrax mounting components come with a 12 month warranty against manufacturing defects, subject to stated limitations. Proof of purchase is required for any warranty claims. Read full details online at maxtrax.com.au/pages/warranty

UNIVERSAL MOUNT PIN COMPATIBILITY

BOARD MODELS	COMPATIBLE
MAXTRAX MKII	✓
MAXTRAX XTREME	✓
MAXTRAX LITE	✓
MAXTRAX MINI	✓

MAXTRAX



CONTACT US

EXPLORE MORE
MAXTRAX.COM.AU



@maxtrax.hq



@maxtrax_hq



@maxtraxhq

47 Griffin Crescent, Brendale, Queensland 4500 Australia
Maxtrax Australia Trading Unit Trust ABN: 55 661 271 058