



RHINO-RACK

Alloy Luggage Tray Fitment to Thule Roof Racks (TK24/TK25)

Place these instructions in the vehicle's glove box after installation is complete.

Important: Please read these instructions carefully prior to installation. Please refer to your fitting instruction to ensure that the roof racks are installed in the correct locations. Check the contents of kit before commencing fitment and report any discrepancies

Parts List

INCLUDED COMPONENTS

Item	Component Name	Qty	Part #
1	Metal Bracket	4-6	C129-8
2	M6 Spring Washer	4	W004
3	M6 Flat Washer	10-12	W031
4	M6 Eye Nut	4	C623
5	M6x16mm Bolt	6-8	B014
6	M6x25mm Square Head Bolt	4	B015
7	M6 Nyloc Nut	6-8	N013
8	Securing Lock Tab Plate	6-8	A471
9	Fitting Instructions	1	R249

REFERENCED COMPONENTS

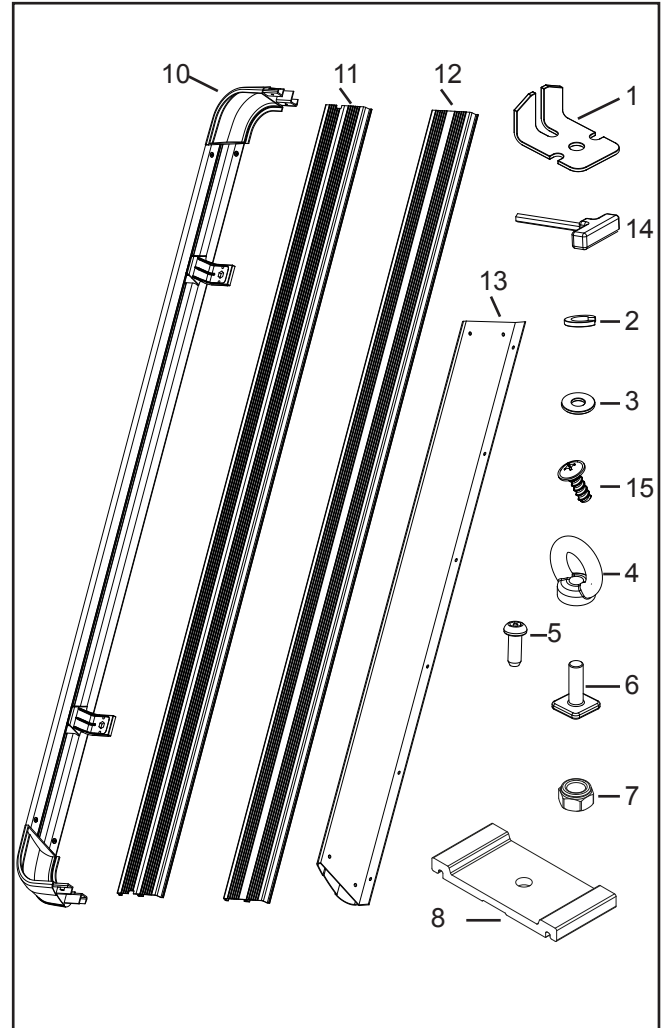
10	Side Rail Assembly	2	
11	Plank Extrusion (With 2 Notches)	2	
12	Plank Extrusion (With No Notches)	2-3	
13	Front/Rear Rail	1	
14	5mm Security Allen Ket	1	SECKEY-S
15	1/4"-10mm Screw	8	B046

Care Instruction:

Thoroughly clean vehicle roof racks prior to fitting the Rhino Alloy Luggage Tray.

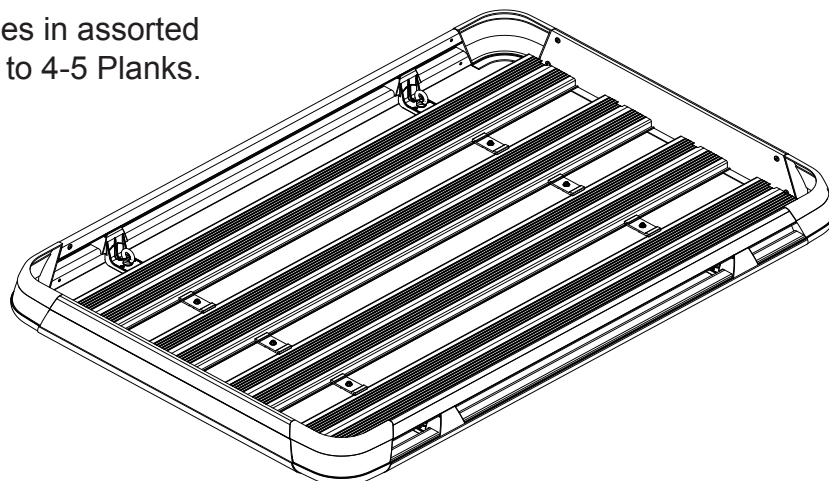
Tools Required

Security Allen key, provided in kit.
Tape Measure.
Phillips Head screwdriver
10mm Socket & Wrench



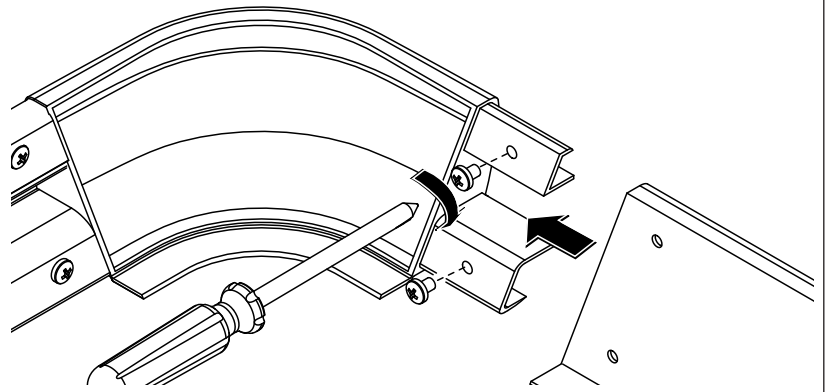
Layout;

Alloy Luggage Tray comes in assorted sizes from 2 Cross Bars to 4-5 Planks.



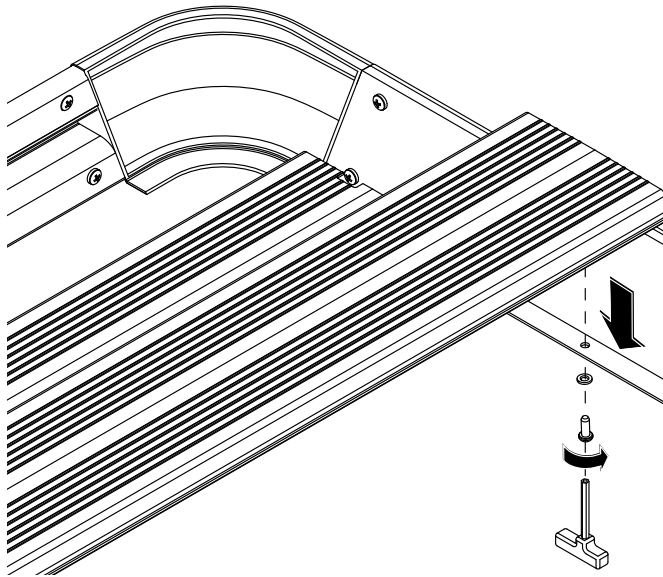
Insert the two Front Rail Extrusions into the Side Rail Assemblies. Insert the screws with a Philips Head Screw Driver as shown.

1



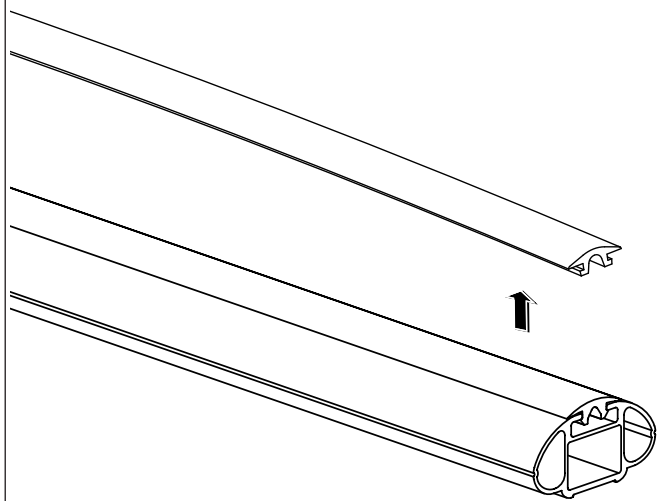
Insert the Plank Extrusions into the tray. Attach each Plank with two M6 Security Bolts and two Spring Washers using the Allen key provided. Please note there are two Plank Extrusions with slots. These are to be positioned on the far left and right hand side of the tray.

2



Remove Rubber buffer strip.

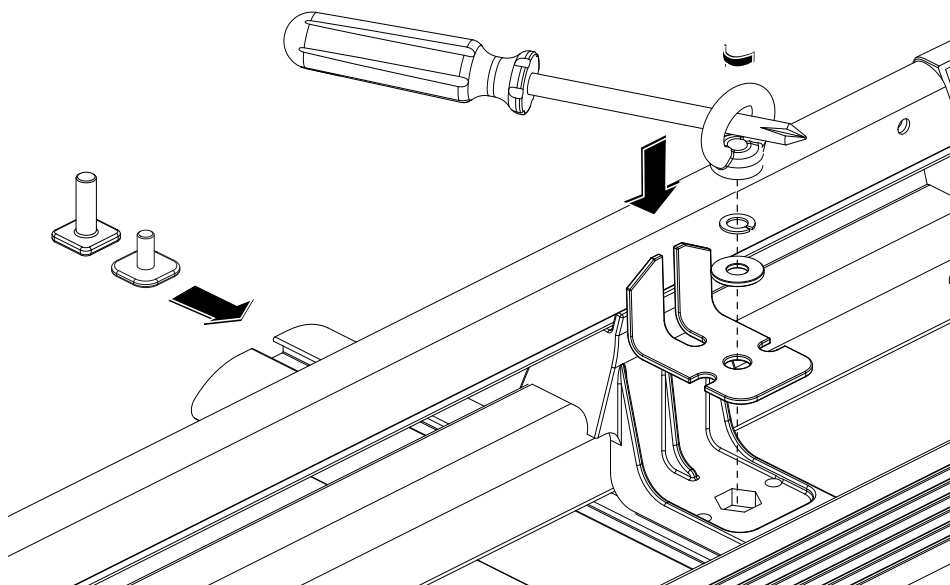
3



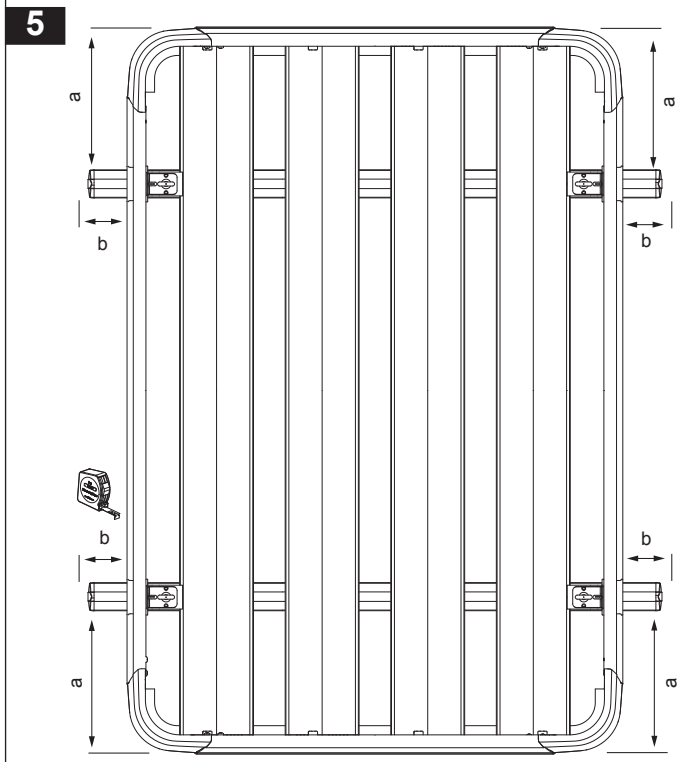
Will fit on Thule Wingbar too.

Slide a M6 x 25mm, and 2 or 3 M6 x 16mm square head bolts into the crossbar. Repeat this till all these parts are used. Place a Metal bracket in each Plastic Side Rail Housing. Slide the M6 x 20mm bolts so they sit in between each plank. Place the Alloy tray on top of the vehicle so the M8 bolts protude though the metal bracket. Place a Flat Washer, a Spring Washer and a M6 Eye Nut on each bolt.

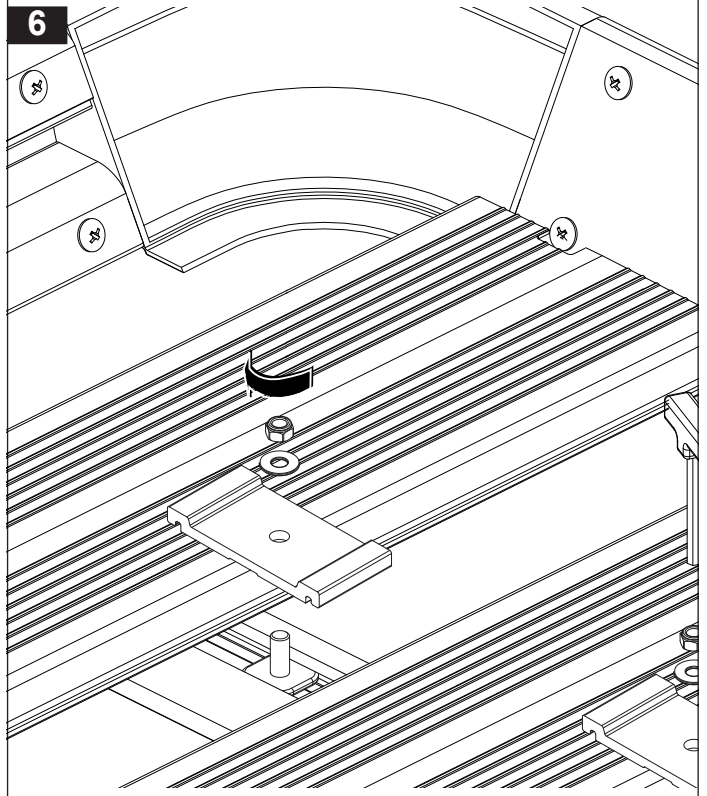
4



Adjust the Alloy Tray on the cross bars so that dimension 'a' is equal and dimension 'b' is equal. Tighten the eye nuts to secure the Alloy Tray to the cross bars, make sure the eye nuts are parallel to the cross bars as shown.



Place a securing lock tab plate in the cross bar between each Plank and assemble as shown below. Repeat till all Planks are secured to the cross bar.



Important Information

Recommendations

It is essential that all bolt connections be checked after driving a short distance when you first install your Rhino Rack accessory. Bolt connections should be checked again at regular intervals (probably once a week is enough, depending on road conditions, usage, loads and distances travelled). You should also check the roof bars and accessories each time they are refitted.

Make sure to fasten your load securely. Please ensure that all loads are evenly distributed and that the centre of gravity is kept as low as possible.

Use only non-stretch fastening ropes or straps.

Sensitivity to Crosswinds, Behaviour in Curves and Braking.

The handling characteristics of the vehicle, changes when you transport a load on the roof. For safety reasons, we recommend you exercise extreme care when transporting wind-resisting loads; special consideration must be taken into account when braking.

Please remove crossbars when putting vehicle through an automatic car wash.

Load Ratings

Refer to vehicle manufactures carrying capacity for roof bars. When roof racks are to be used in off-road conditions, please build a safety factor of 1.5 into this load limit. Although the roof racks are tested and approved to AS1235-2000, Australian road conditions can be much more rigorous. However, increasing the number of crossbars does not increase the vehicles maximum permissible roof loading.

Note for Dealers and Fitters

It is your responsibility to ensure instructions are given to the end user or client

Rhino-Rack
3 Pike Street, Rydalmere,
NSW 2116, Australia.
(Ph) (02) 9638 4744
(Fax) (02) 9638 4822

Document No: R249
Prepared By: Sam Whelan
Authorised By: Chris Murty

Issue No: 01
Issue Date: 20/12/2012

These instructions remain the property of Fetovu Pty Ltd T/as Rhino-Rack and may not be used or changed for any other purpose than intended.