



RHINO-RACK

Yakima T-FK4 RLT600H Fit Kit

Item	Component Name	Qty	Part No.
1	M6 GMH Special Nut	6	N018
2	M6 Spring Washer	2	W004
3	M6 Flat Washer	2	W003
4	M6x16 Button Screw	2	B061
4	Instructions	1	R691

***Note:** RLT600H Parts as separate.
Fix the Quick Mount Spacer to the Leg using the hardware in the leg kit. The original bolts, spring and flat washers will be used with those provided to secure the RLT600H legs to the Yakima Track.

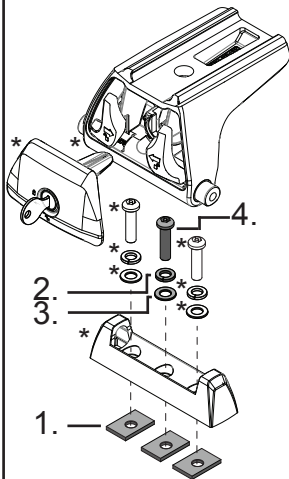
Tools Required:
5mm Allen Key



Issue: 01

Document No: R691

CONTROLLED



Prepared: Kayle Everett



RHINO-RACK

Yakima T-FK4 RLT600H Fit Kit

Item	Component Name	Qty	Part No.
1	M6 GMH Special Nut	6	N018
2	M6 Spring Washer	2	W004
3	M6 Flat Washer	2	W003
4	M6x16 Button Screw	2	B061
4	Instructions	1	R691

***Note:** RLT600H Parts as separate.
Fix the Quick Mount Spacer to the Leg using the hardware in the leg kit. The original bolts, spring and flat washers will be used with those provided to secure the RLT600H legs to the Yakima Track.

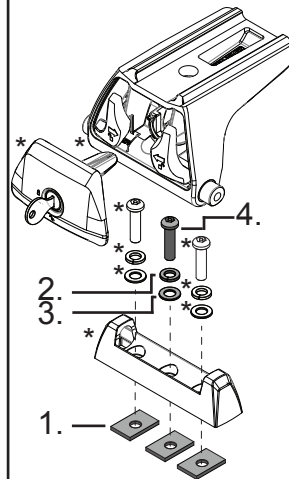
Tools Required:
5mm Allen Key



Issue: 01

Document No: R691

CONTROLLED



Prepared: Kayle Everett



RHINO-RACK

Yakima T-FK4 RLT600H Fit Kit

Item	Component Name	Qty	Part No.
1	M6 GMH Special Nut	6	N018
2	M6 Spring Washer	2	W004
3	M6 Flat Washer	2	W003
4	M6x16 Button Screw	2	B061
4	Instructions	1	R691

***Note:** RLT600H Parts as separate.
Fix the Quick Mount Spacer to the Leg using the hardware in the leg kit. The original bolts, spring and flat washers will be used with those provided to secure the RLT600H legs to the Yakima Track.

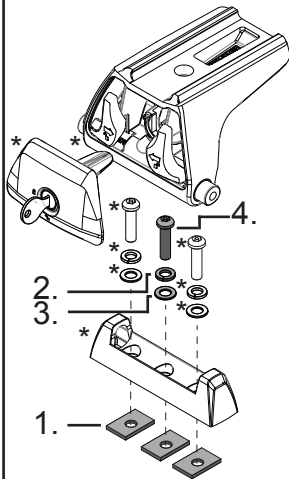
Tools Required:
5mm Allen Key



Issue: 01

Document No: R691

CONTROLLED



Prepared: Kayle Everett



RHINO-RACK

Yakima T-FK4 RLT600H Fit Kit

Item	Component Name	Qty	Part No.
1	M6 GMH Special Nut	6	N018
2	M6 Spring Washer	2	W004
3	M6 Flat Washer	2	W003
4	M6x16 Button Screw	2	B061
4	Instructions	1	R691

***Note:** RLT600H Parts as separate.
Fix the Quick Mount Spacer to the Leg using the hardware in the leg kit. The original bolts, spring and flat washers will be used with those provided to secure the RLT600H legs to the Yakima Track.

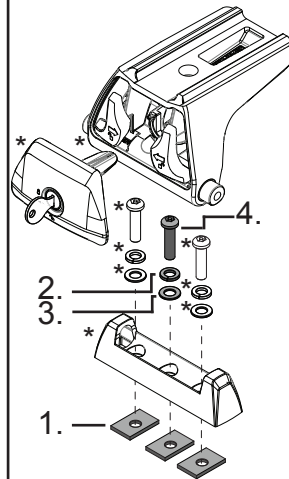
Tools Required:
5mm Allen Key



Issue: 01

Document No: R691

CONTROLLED



Prepared: Kayle Everett



RHINO-RACK

Yakima T-FK4 RLT600H Fit Kit

Item	Component Name	Qty	Part No.
1	M6 GMH Special Nut	6	N018
2	M6 Spring Washer	2	W004
3	M6 Flat Washer	2	W003
4	M6x16 Button Screw	2	B061
4	Instructions	1	R691

***Note:** RLT600H Parts as separate.
Fix the Quick Mount Spacer to the Leg using the hardware in the leg kit. The original bolts, spring and flat washers will be used with those provided to secure the RLT600H legs to the Yakima Track.

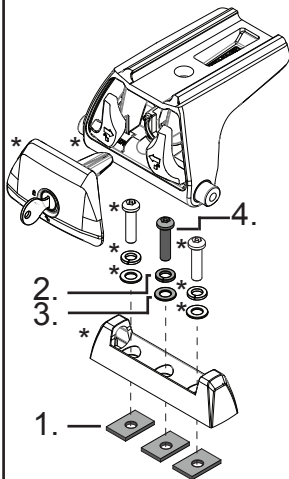
Tools Required:
5mm Allen Key



Issue: 01

Document No: R691

CONTROLLED



Prepared: Kayle Everett



RHINO-RACK

Yakima T-FK4 RLT600H Fit Kit

Item	Component Name	Qty	Part No.
1	M6 GMH Special Nut	6	N018
2	M6 Spring Washer	2	W004
3	M6 Flat Washer	2	W003
4	M6x16 Button Screw	2	B061
4	Instructions	1	R691

***Note:** RLT600H Parts as separate.
Fix the Quick Mount Spacer to the Leg using the hardware in the leg kit. The original bolts, spring and flat washers will be used with those provided to secure the RLT600H legs to the Yakima Track.

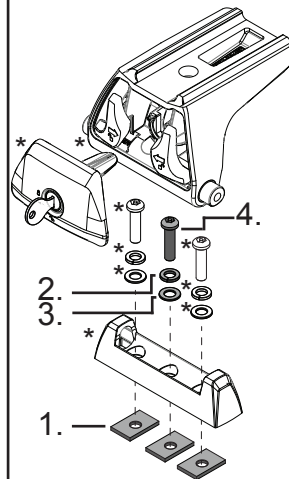
Tools Required:
5mm Allen Key



Issue: 01

Document No: R691

CONTROLLED



Prepared: Kayle Everett