



# RHINO-RACK

Thule T-FK2 RLT600H Fit Kit

Item	Component Name	Qty	Part No.
1	M6x20x20 Square Nut	4	N025
2	Instructions	1	R693

**\*Note:** RLT600H Parts as separate.  
Fix the Quick Mount Spacer to the Leg using the hardware in the leg kit. The original bolts, spring and flat washers will be used with the square nuts provided to secure the RLT600H legs to the Thule Track.

**Tools Required:**  
5mm Allen Key

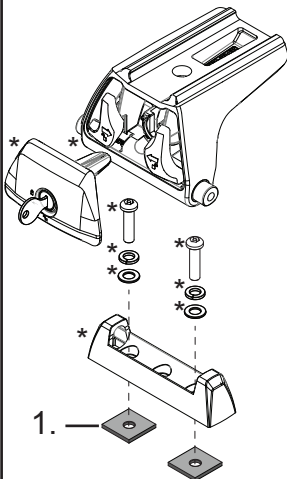


Issue: 01

Document No: R693

Prepared: Kayle Everett

CONTROLLED



# RHINO-RACK

Thule T-FK2 RLT600H Fit Kit

Item	Component Name	Qty	Part No.
1	M6x20x20 Square Nut	4	N025
2	Instructions	1	R693

**\*Note:** RLT600H Parts as separate.  
Fix the Quick Mount Spacer to the Leg using the hardware in the leg kit. The original bolts, spring and flat washers will be used with the square nuts provided to secure the RLT600H legs to the Thule Track.

**Tools Required:**  
5mm Allen Key

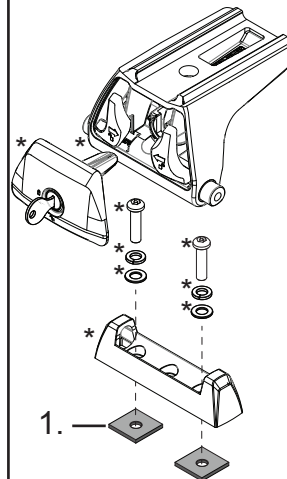


Issue: 01

Document No: R693

Prepared: Kayle Everett

CONTROLLED



# RHINO-RACK

Thule T-FK2 RLT600H Fit Kit

Item	Component Name	Qty	Part No.
1	M6x20x20 Square Nut	4	N025
2	Instructions	1	R693

**\*Note:** RLT600H Parts as separate.  
Fix the Quick Mount Spacer to the Leg using the hardware in the leg kit. The original bolts, spring and flat washers will be used with the square nuts provided to secure the RLT600H legs to the Thule Track.

**Tools Required:**  
5mm Allen Key

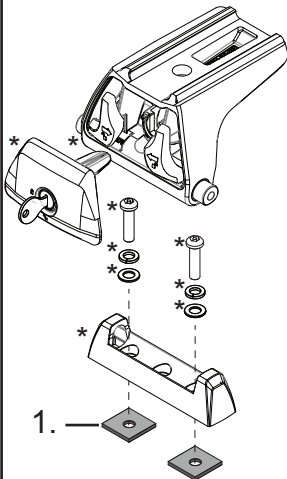


Issue: 01

Document No: R693

Prepared: Kayle Everett

CONTROLLED



# RHINO-RACK

Thule T-FK2 RLT600H Fit Kit

Item	Component Name	Qty	Part No.
1	M6x20x20 Square Nut	4	N025
2	Instructions	1	R693

**\*Note:** RLT600H Parts as separate.  
Fix the Quick Mount Spacer to the Leg using the hardware in the leg kit. The original bolts, spring and flat washers will be used with the square nuts provided to secure the RLT600H legs to the Thule Track.

**Tools Required:**  
5mm Allen Key

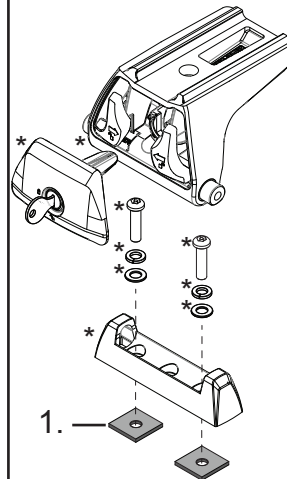


Issue: 01

Document No: R693

Prepared: Kayle Everett

CONTROLLED



# RHINO-RACK

Thule T-FK2 RLT600H Fit Kit

Item	Component Name	Qty	Part No.
1	M6x20x20 Square Nut	4	N025
2	Instructions	1	R693

**\*Note:** RLT600H Parts as separate.  
Fix the Quick Mount Spacer to the Leg using the hardware in the leg kit. The original bolts, spring and flat washers will be used with the square nuts provided to secure the RLT600H legs to the Thule Track.

**Tools Required:**  
5mm Allen Key

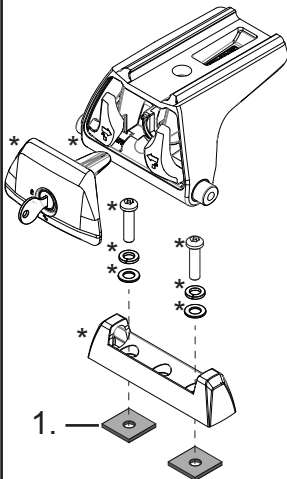


Issue: 01

Document No: R693

Prepared: Kayle Everett

CONTROLLED



# RHINO-RACK

Thule T-FK2 RLT600H Fit Kit

Item	Component Name	Qty	Part No.
1	M6x20x20 Square Nut	4	N025
2	Instructions	1	R693

**\*Note:** RLT600H Parts as separate.  
Fix the Quick Mount Spacer to the Leg using the hardware in the leg kit. The original bolts, spring and flat washers will be used with the square nuts provided to secure the RLT600H legs to the Thule Track.

**Tools Required:**  
5mm Allen Key



Issue: 01

Document No: R693

Prepared: Kayle Everett

CONTROLLED

