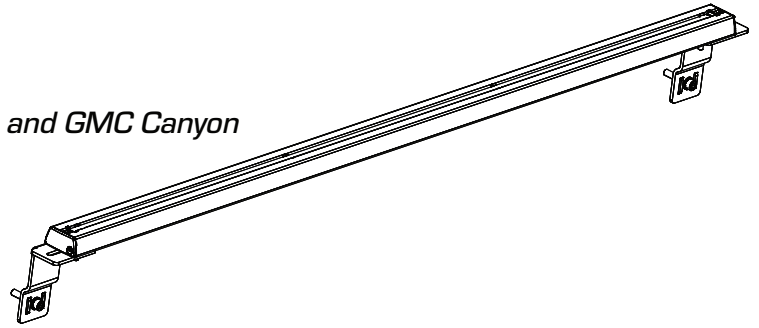




rockymounts

47" Track

For 2015-2019 Chevy Colorado and GMC Canyon



Guidelines

Maximum Weight: 35 lb per bike

Compatible with RockyMounts DriveShaft HM, HotRod, and LoBall series bike mounts*

After loading a bicycle, shake fork side to side to ensure assembly is tight and secure

Not intended for offroad use

Trimming may be recommended for trucks with spray-on bedliners

Parts Included

A: 47" Track w/ End Caps

B: Mounting Bracket

C: M8 Nut Assembly

D: M8 Flat Washer

E: M8x40 Allen Bolt

F: M6 Nyloc Nut

G: M6x18 Flat Washer

H: M6x12 Flat Washer

I: M6x25 Allen Bolt

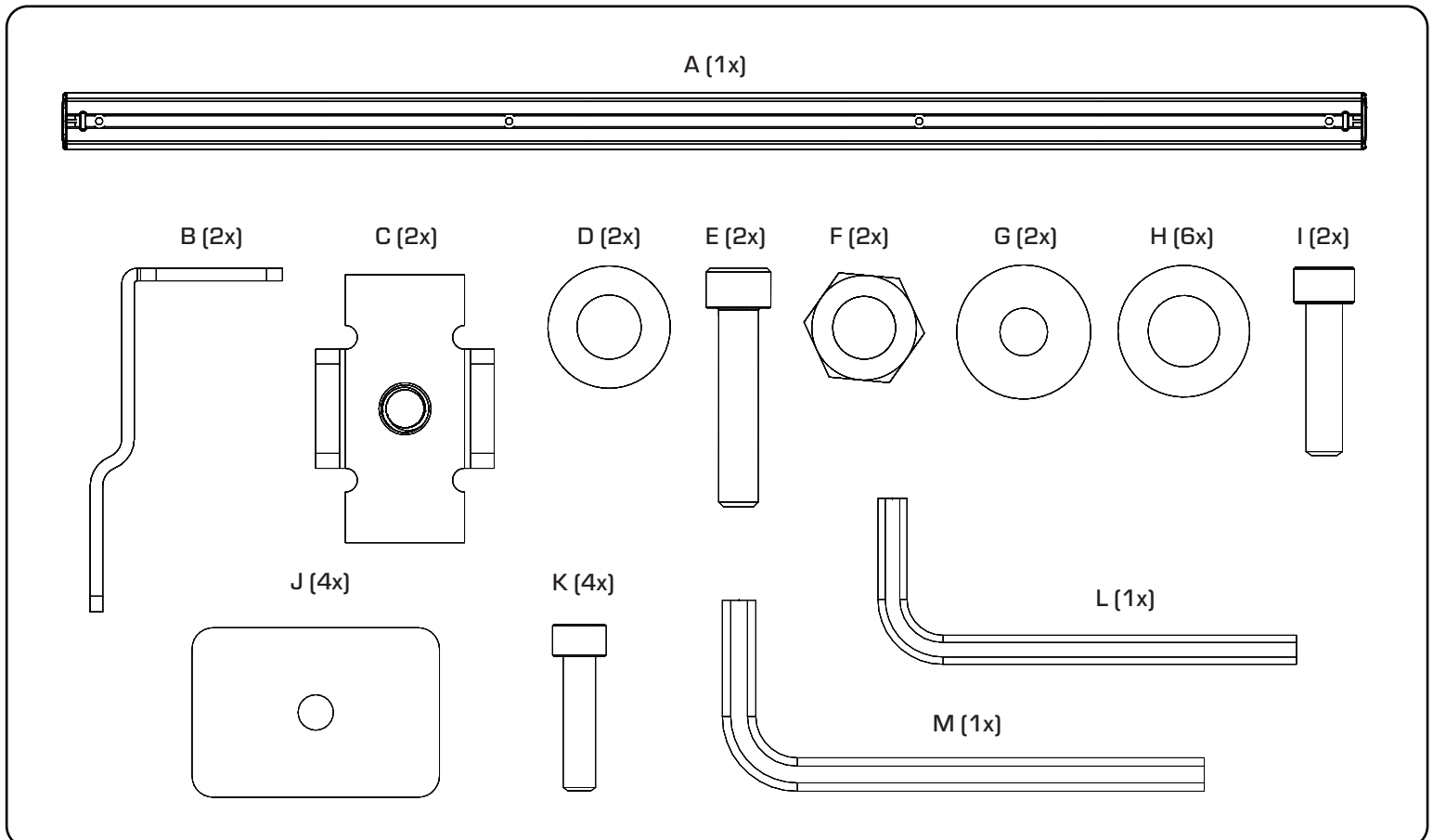
J: Track Plate

K: M6x18 Allen Bolt

L: 5mm Allen Wrench

M: 6mm Allen Wrench

* Bike mounts not included.

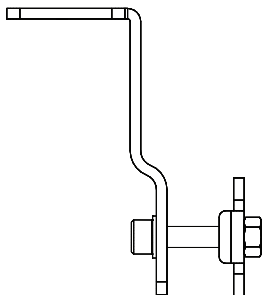


Read all warnings on last page before use. **rockymounts™**

Assembly Instructions

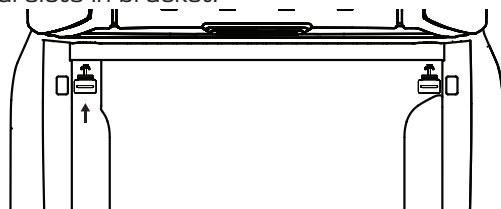
1 Prepare Bracket

Assemble bracket (B) with M8x40 Allen bolt (E), M8 flat washer (D), and M8 nut assembly (C). Do not fully tighten nut - keep it loose to ease installation.



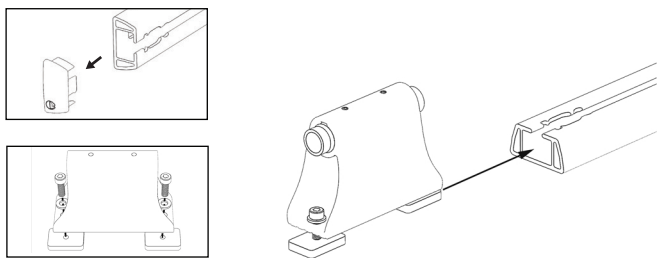
2 Install Brackets

Remove right and left tie-down plugs from front wall of truck bed. Insert M8 nut assembly (C) through tie-down holes. Tighten using M6 Allen wrench (M), with the platform at the top of each vertically aligned bracket (B). Nut assembly tabs should be aligned with vertical slots in bracket.



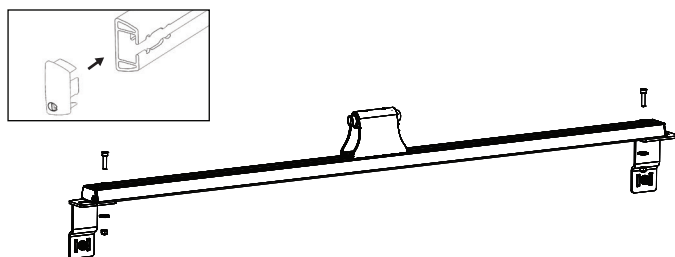
3 Install Bike Mounts

Press tabs on end caps and pull out. Loosely install track hardware onto bike mounts. Slide bike mounts onto track.



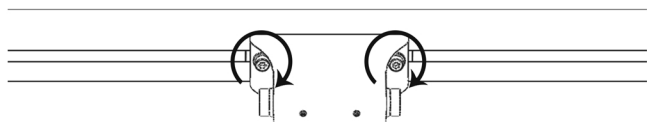
4 Install Track

Reinstall end caps. Mount track to brackets using an M6x25 Allen bolt (I), M6x12 flat washer (H), M6x18 flat washer (G), and M6 Nyloc nut (F) on each side. Tighten with M5 Allen wrench (L).



5 Tighten Bike Mounts

Slide bike mounts to desired location and tighten all bolts. Bike mounts should be secure and not move after tightening.



Warnings

Remove Baby Seats, Panniers, U-Locks, or items that could detach from bicycle.
Check all fastenings before each use.
Once a year, remove track from car. Clean and inspect for damage.
Remove bikes before entering a car wash.

Limited Lifetime Warranty

At RockyMounts™ we offer a Limited Lifetime Warranty for products purchased after January 1, 2014 to the original owner. For details of the Warranty, guidelines, and how to make a claim please see rockymounts.com/warranty

Technical Support

Please call us at 303-402-0190 or email at ride@rockymounts.com for questions regarding use, assembly, and support