



# RHINO-RACK

CONTROLLED

## RRG2 Steel Ratchet with 4m Strap

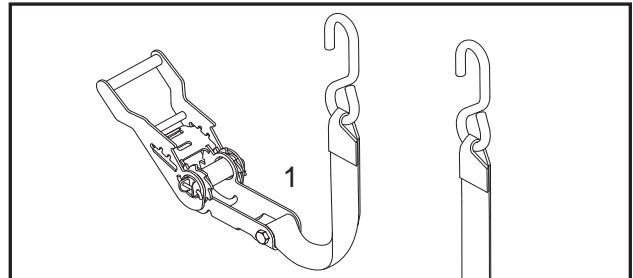
**Important:** Please read these instructions carefully prior to installation. Please refer to your fitting instruction to ensure that the bike rack is installed in the correct locations. Check the contents of kit before commencing fitment and report any discrepancies. Place these instructions in the vehicle's glove box after installation is complete.

### Parts List

Item	Component Name	Qty	Part No.
1	Yellow Strap with Ratchet	1	C047
2	Instructions	1	R1367

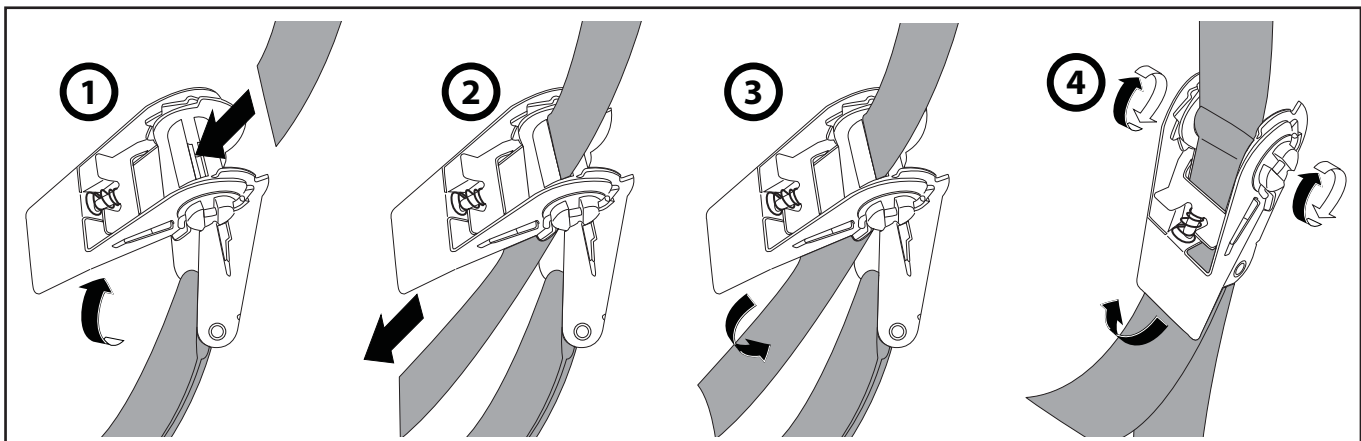
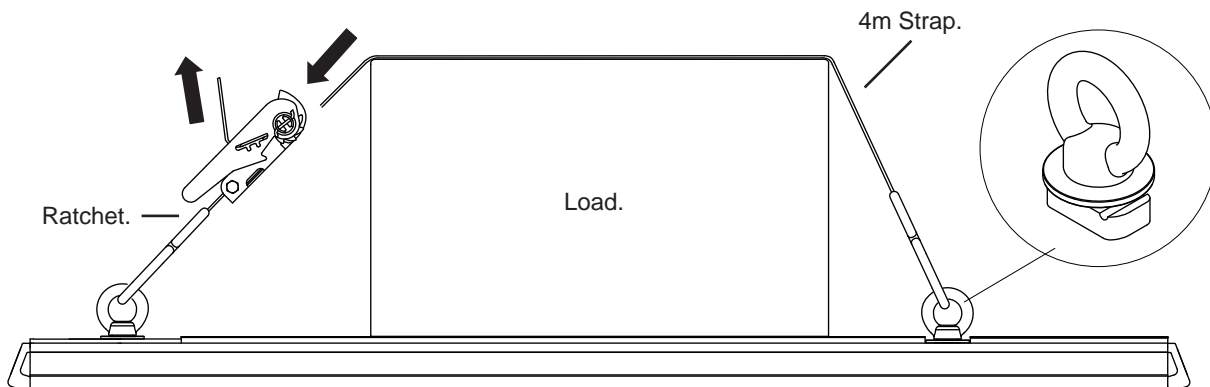
**Note:** Eyebolt kit (REB/ 43178) sold as separate. Maximum lashing capacity is 500kg (1102lbs).

**Caution:** Must not be used for lifting. Always inspect prior to use. Protect from friction and abrasion. Do not tie knots in webbing, Do not use if damaged.

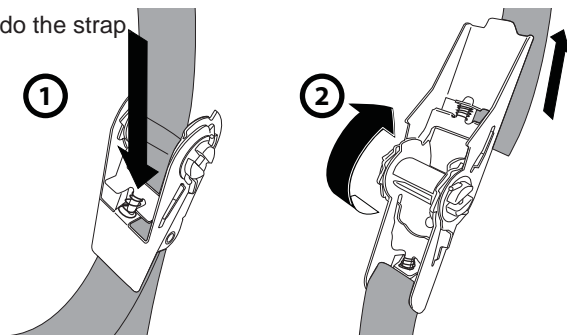


### Instructions

- 1 Attach both sides of the strap by hooking them onto eyebolts. Run the 4m strap over the load and through the ratchet as shown.



- 2 To undo the strap



Rhino-Rack  
3 Pike Street, Rydalmere,  
NSW 2116, Australia.  
(Ph) (02) 9638 4744  
(Fax) (02) 9638 4822

Document No: R1367  
Prepared By: Kayle Everett  
Authorised By: Chris Murty  
Issue No: 01  
Issue Date: 29/05/2017

These instructions remain the property of Rhino-Rack Australia Pty Ltd and may not be used or changed for any other purpose than intended.