



RHINO-RACK

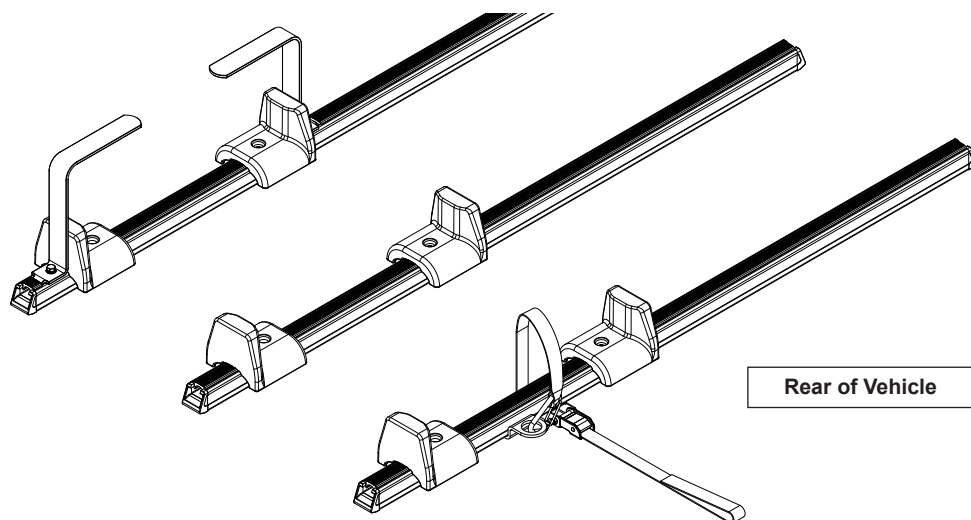
Aerodynamic & Heavy Duty Roof Rack Systems

REGLK - Rhino Ladder Slide Kit

Important: Please read these instructions carefully prior to installation.
Please refer to your fitting instruction to ensure that the roof racks are installed in the correct locations.
Check the contents of this kit before commencing fitment and report any discrepancies.
Place these instructions in the vehicle's glove box after installation is complete.

Three Crossbar Layout

Front of Vehicle



Rear of Vehicle

Care Instruction: Wash vehicle roof racks prior to installing Rhino ladder slide kit.

Important Information

Maximum carrying capacity: Load not to exceed maximum capacity specified by vehicle manufacturer.

Recommendations:

It is essential that all bolt connections be checked after driving a short distance when you first install your cross bars. Bolt connections should be checked again at regular intervals (probably once a week is enough, depending on road conditions, usage, loads and distances travelled). You should also check the cross bars each time they are re-fitted.

Make sure to fasten your load securely. Please ensure that all loads are evenly distributed and that the centre of gravity is kept as low as possible.

Use only non-stretch fastening ropes or straps.

Sensitivity to cross winds, behaviour in curves and braking.

The handling characteristics of the vehicle, changes when you transport a load on the roof. For safety reasons, we recommend you exercise extreme care when transporting wind-resisting loads; special consideration must be taken into account when braking.

Please remove cross bars when putting vehicle through an automatic car wash.

Load Ratings:

Load not to exceed maximum capacity specified by vehicle manufacturer. When cross bars are to be used in off-road conditions please build a safety factor of 1.5 into this load limit. Although the cross bars are tested and approved to AS1235-2000, Australian road conditions can be much more rigorous. However, increasing the number of cross bars does not increase the vehicles maximum permissible roof loading.

Note for Dealers and Fitters:

It is your responsibility to ensure instructions are given to the end user or client.

Rhino-Rack
3 Pike Street, Rydalmere,
NSW 2116, Australia.
(Ph) (02) 9638 4744
(Fax) (02) 9638 4822

Document No: RR-182
Prepared By: Nigel Greig
Authorised By: Gary England

Issue No: 04
Issue Date: 21/12/2010

These instructions remain the property of RhinoRack Australia Pty Ltd and may not be used or changed for any other purpose than intended.



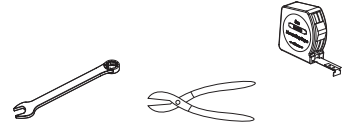
REGLK - Rhino Ladder Slide Kit

Parts List

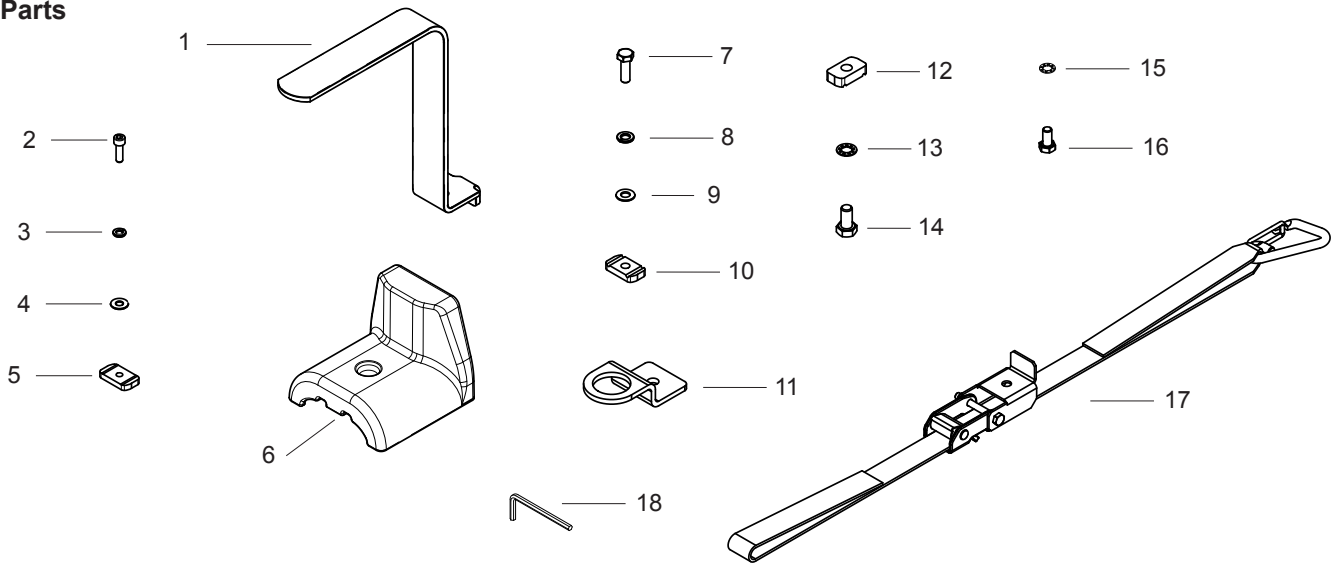
Item	Component Name	Qty	Part No.
1	Rhino Single Ladder Hoop	2	C034
2	M6 x 20mm Socket Head	6	B054
3	M6 Spring Washer	6	W004
4	M6 Flat Washer OD16mm	6	W031
5	M6 Channel Nut	6	N002
6	Ladder Slide	6	M400
7	M8 x 25mm Hex Head	2	B101
8	M8 Spring Washer	2	W019
9	M8 x OD17mm Flat Washer	2	W020
10	M8 x Channel Nut	4	N003
11	RLS5 Snap Hook Bracket	1	C122
12	M10 Channel Nut	1	N024
13	M10 Shakeproof Washer	1	W021
14	M10 x 20mm Hex Head	1	B003
15	M8 Shakeproof Washer	1	W033
16	M8 x 16mm Hex Head	1	B019
17	RLS5 Ladder Strap	1	-
18	5mm Allen Key	1	H002
19	Fitting Instructions	1	RS-182

Tools Required

- 5mm Allen Key (provided in kit)
- Tape Measure
- Side Cutters/Knife
- Spanners/Socket Set



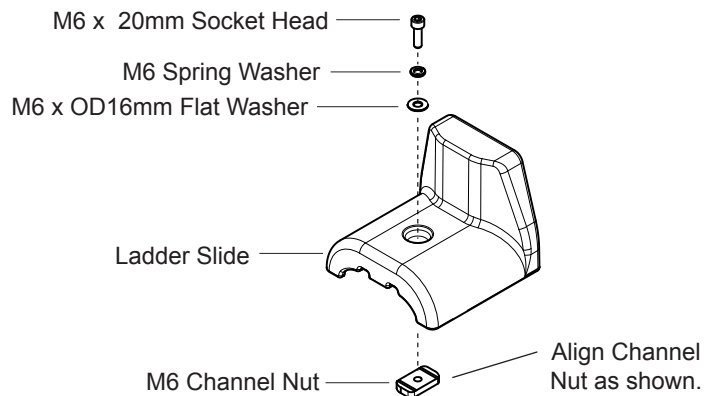
Parts



1 Fit Hardware to Ladder Slide:

Loosely assemble the hardware detailed below to each of the ladder slides as shown.

Note the orientation of the Channel Nut for insertion into the crossbar.



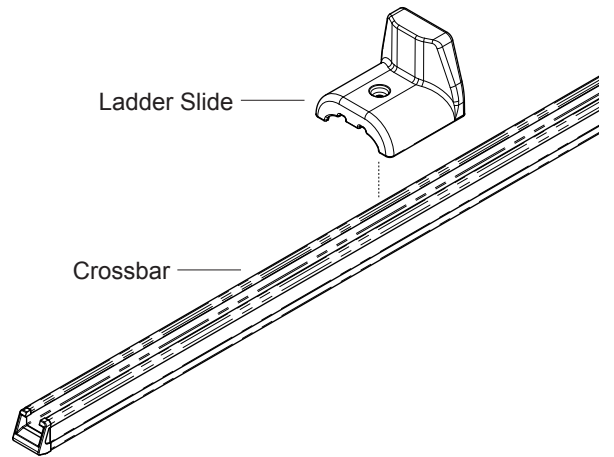
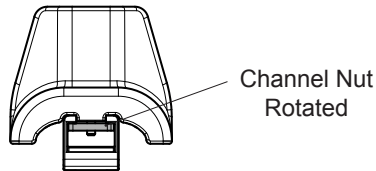


REGLK - Rhino Ladder Slide Kit

2 Ladder Slide Fitment:

Remove the rubber buffer strip from the crossbars. Lower ladder slide into position with the channel nut aligned as indicated in step 1.

Position the slide to suit your ladder and tighten the bolt with the allen key provided. Ensure that the channel nut has rotated as shown in image below. Repeat this for all ladder slides on all crossbars.



3 Ladder Hoop Fitment:

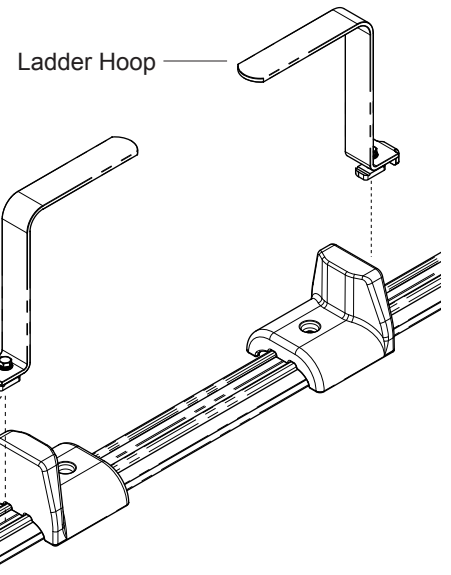
On the front crossbar only, fit the ladder hoops against the back of the ladder slides as shown.

Fit the hardware specified to each hoop prior to fitment with the channel nut aligned with the crossbar as shown.

Tighten the hoops in position making sure the channel nut has rotated under the crossbar.

M8 x 25mm Hex Head
M8 Spring Washer
M8 x OD17mm Flat Washer

M8 Channel Nut



4 Ladder Strap Fitment:

Fit the ladder strap and snap hook bracket to the rear crossbar as shown below. Again make sure that the channel nuts have rotated into position when tightening hardware (refer images below)

Cut the rubber buffer strip (previously removed) to the correct lengths and fit to the crossbars.

