



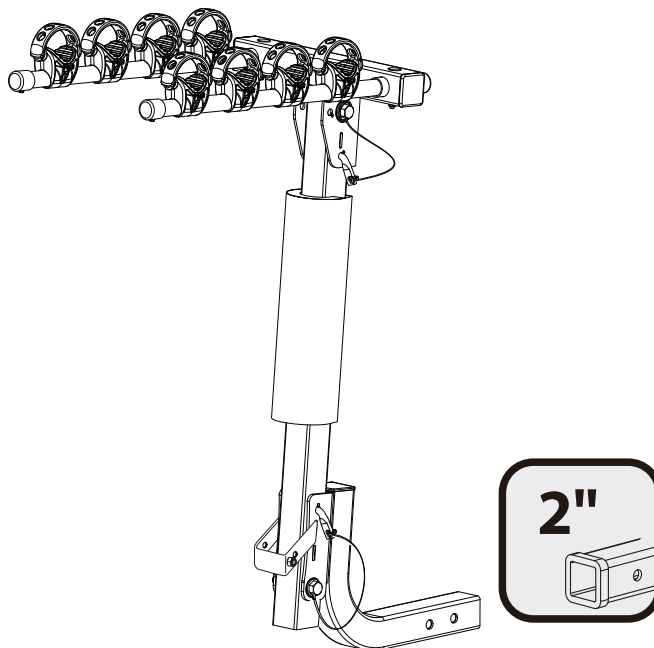
# RHINO-RACK

Aerodynamic & Heavy Duty Roof Rack Systems

## Rhino-Rack 2" Hitch Receiver Bike Carrier (4 Bikes)

**Important:** Please read these instructions carefully prior to installation. Please refer to your fitting instruction to ensure that the bike rack is installed in the correct locations. Check the contents of kit before commencing fitment and report any discrepancies. Place these instructions in the vehicle's glove box after installation is complete.

### Layout



### Important Information

**Maximum carrying capacity: 60kg (132lbs)**

Please refer to your vehicle manufacturers handbook for maximum towing capacity. Always use the lower of the two figures.

**Warning:** Do not attempt to fit the bike carrier to your vehicle unless you fully understand this fitting instructions. Please direct any questions regarding fitting to the dealer from where the bike carrier was purchased. **Use only non-stretch fastening ropes or straps.**

**Recommendations:**

It is essential that all bolt connections be checked after driving a short distance when you first install your bike carrier. Bolt connections should be checked again at regular intervals (once a week is enough, depending on road conditions, usage, loads and distances travelled). You should also check the bike carrier each time it is re-fitted. Always make sure to fasten your load securely. Please also ensure that all loads are evenly distributed and that the centre of gravity is kept as low as possible.

**Bike carrier must be removed when putting vehicle through an automatic car wash.**

**Caution:** The handling characteristics of the vehicle changes when you transport a load on the roof or at the rear. For safety reasons we recommend you exercise extreme care when transporting wind-resistant loads. Special consideration must be taken into account when cornering and braking.

**Note for Dealers and Fitters**

It is your responsibility to ensure this fitting instruction is given to the end user or client

Rhino-Rack  
3 Pike Street, Rydalmere,  
NSW 2116, Australia.  
(Ph) (02) 9638 4744  
(Fax) (02) 9638 4822

Document No: R107  
Prepared By: Andy Wana  
Authorised By: Chris Murty

Issue No: 01  
Issue Date: 11/07/2011

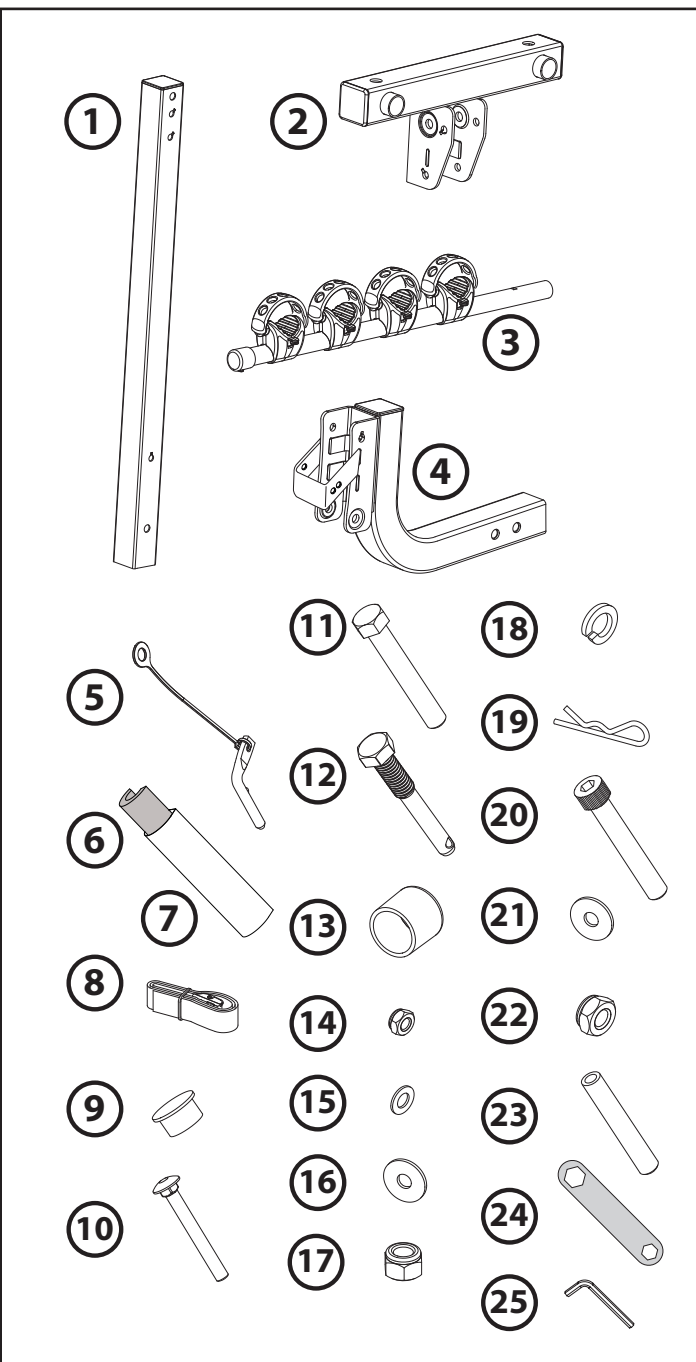
These instructions remain the property of Rhino-Rack Australia Pty Ltd and may not be used or changed for any other purpose than intended.



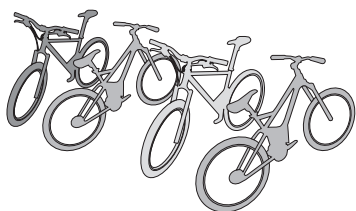
# Rhino-Rack 2" Hitch Receiver Bike Carrier (4 Bikes)

## Parts List

| Item | Component Name                   | Qty |
|------|----------------------------------|-----|
| 1    | Upright Column                   | 1   |
| 2    | Arm Support                      | 1   |
| 3    | Arm (4 bicycles)                 | 2   |
| 4    | 2" Hitch                         | 1   |
| 5    | Locking Pin (with cable)         | 2   |
| 6    | Padding                          | 1   |
| 7    | Padding Cover                    | 1   |
| 8    | Securing Strap                   | 2   |
| 9    | Plug                             | 2   |
| 10   | Cap Head Bolt M6 x 1.0 x 50mm    | 2   |
| 11   | Hex Bolt 1/2" - 13 x 3.25"       | 2   |
| 12   | Hitch Bolt 1/2" - 13 x 3.25"     | 1   |
| 13   | End Cap                          | 2   |
| 14   | M6 Nyloc Nut                     | 2   |
| 15   | M6 Flat Washer 6.5mm x 13mm      | 2   |
| 16   | Flat Washer 13.5mm x 27mm        | 5   |
| 17   | Nut 1/2" - 13                    | 2   |
| 18   | Spring Washer 1/2"               | 1   |
| 19   | R Clip                           | 1   |
| 20   | Bolt M10                         | 1   |
| 21   | Flat Washer M10                  | 2   |
| 22   | Nut M10                          | 1   |
| 23   | Plastic Sleeve                   | 1   |
| 24   | Spanner Tool 10mm, 17mm and 19mm | 2   |
| 25   | Allen Key                        | 1   |
| 26   | Fitting Instruction              | 1   |

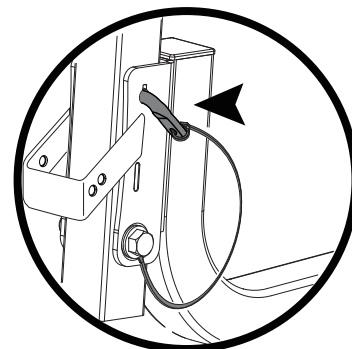
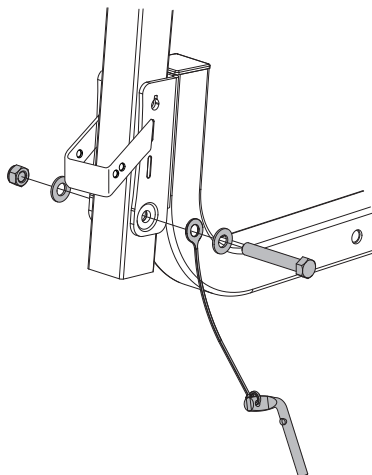
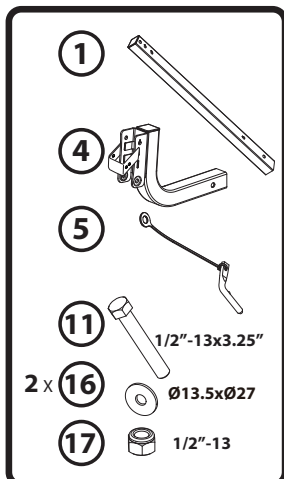


Carry up to 4 bicycles ONLY



Load capacity up to 60kg ONLY  
(up to 15 kg PER bicycle)

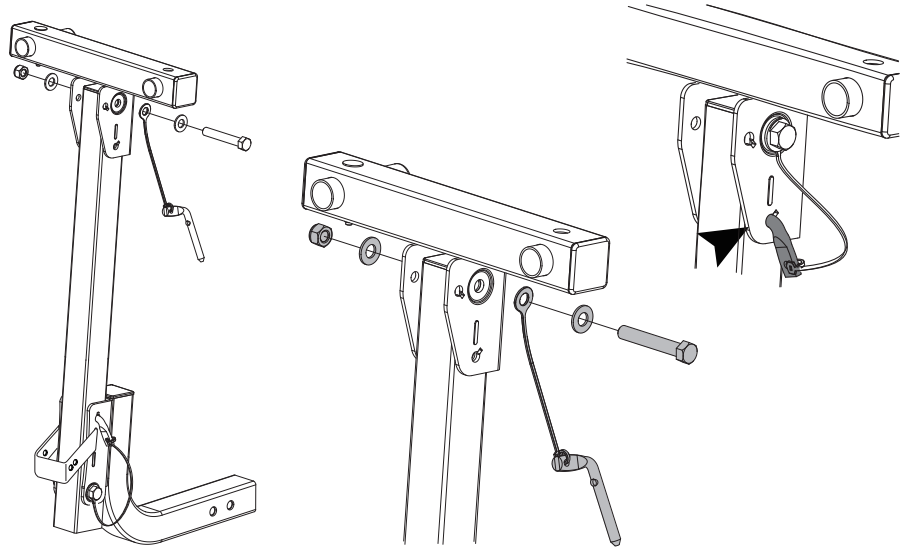
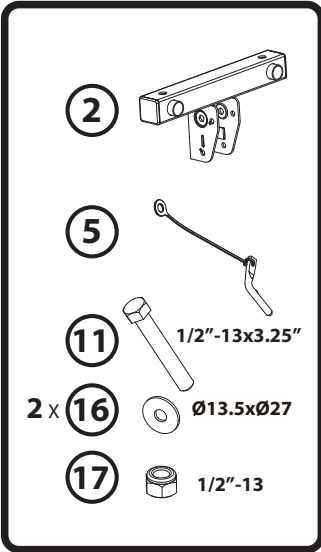
1



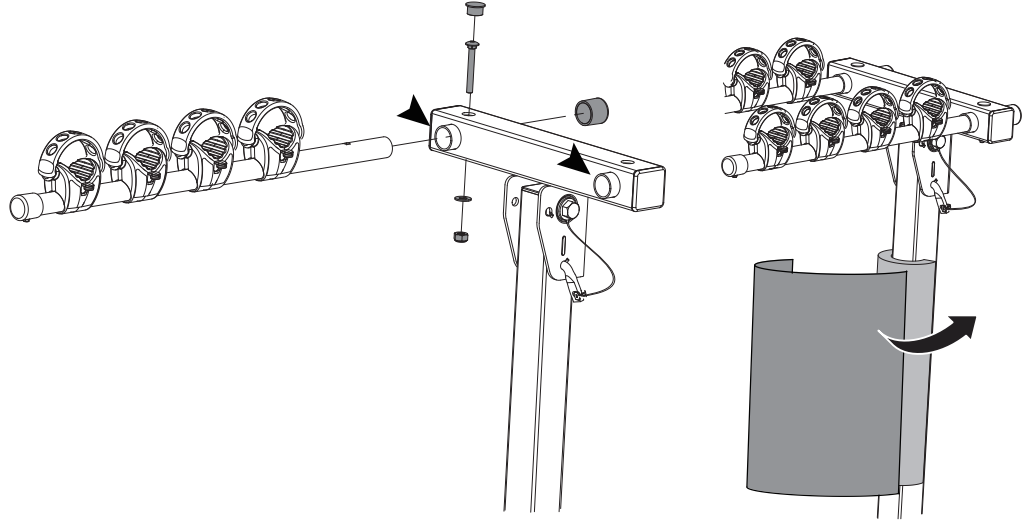
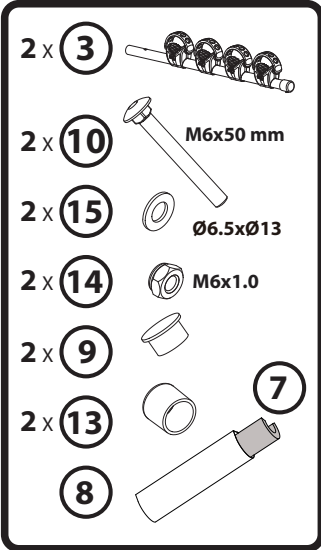


# Rhino-Rack 2" Hitch Receiver Bike Carrier (4 Bikes)

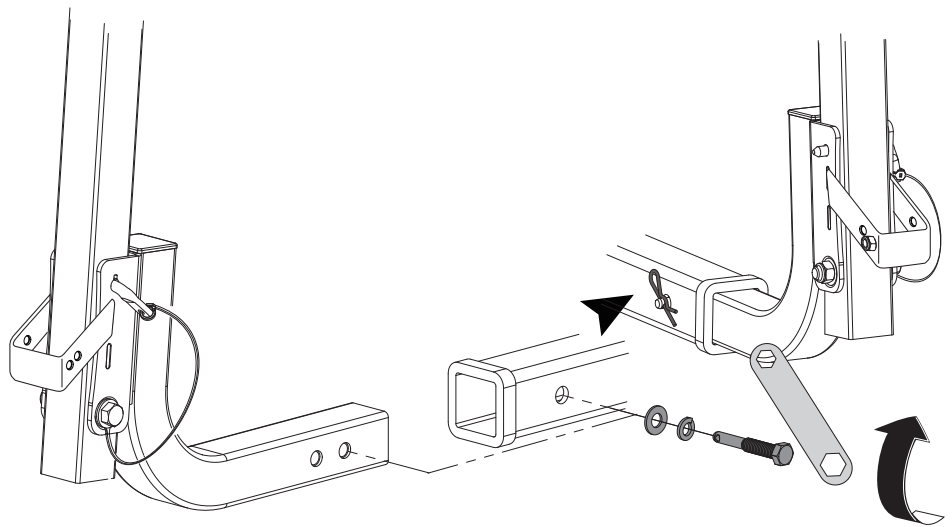
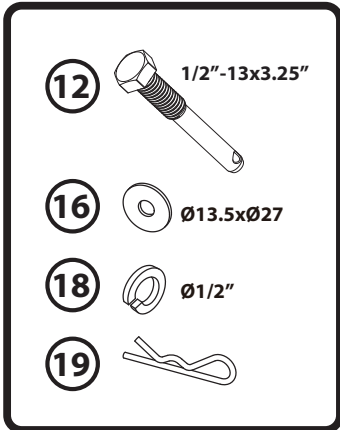
2



3



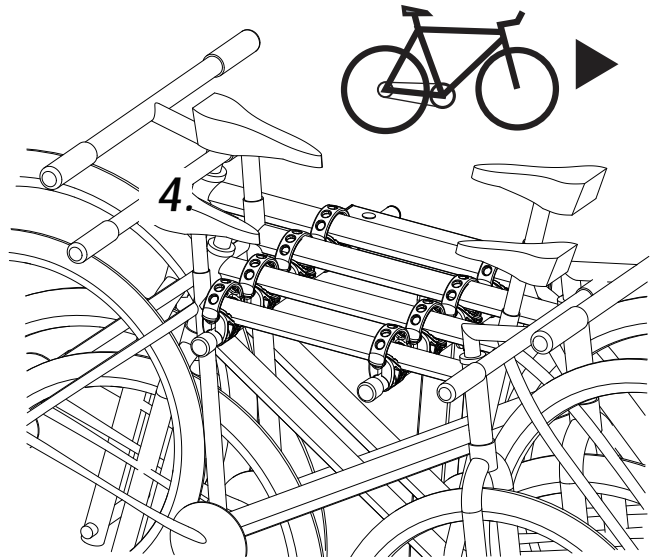
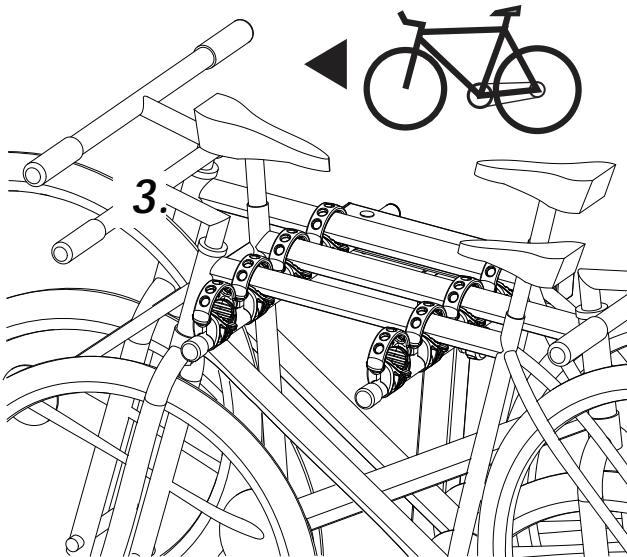
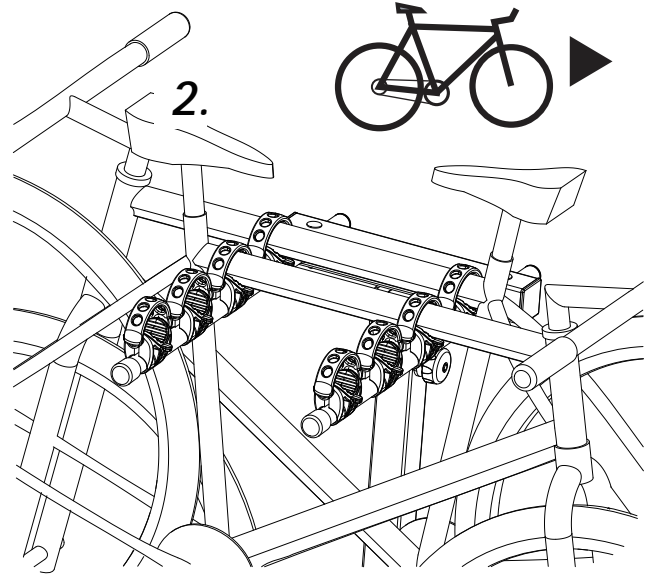
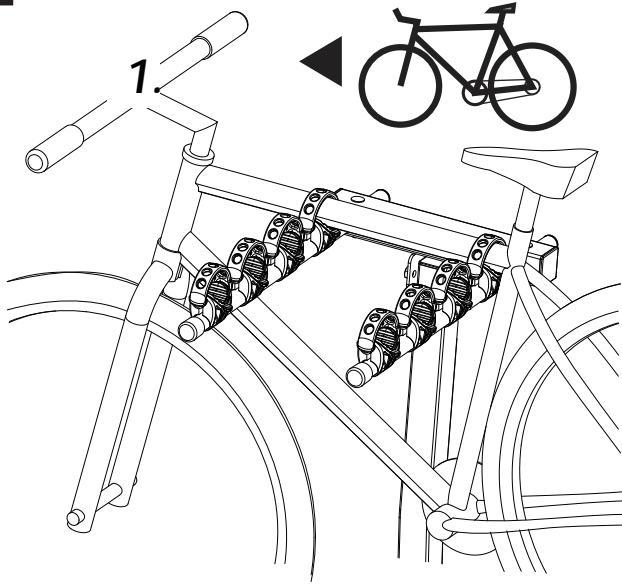
4



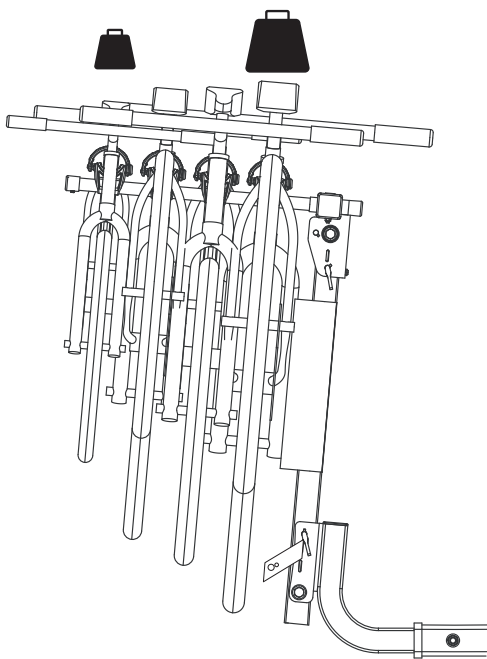


# Rhino-Rack 2" Hitch Receiver Bike Carrier (4 Bikes)

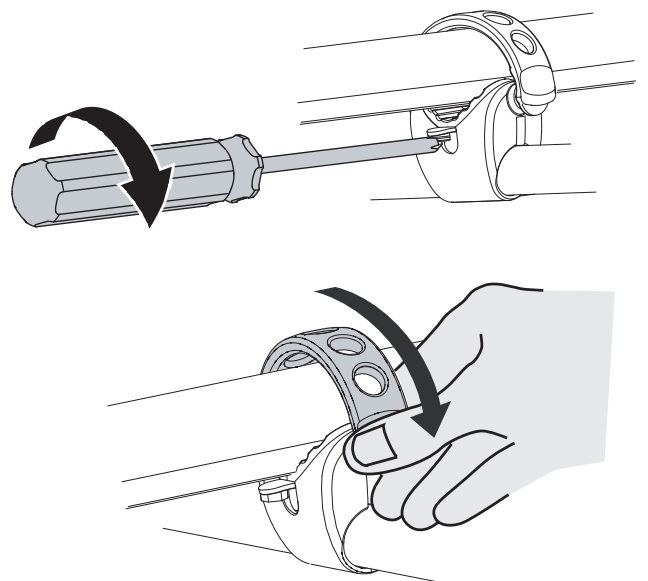
5



6



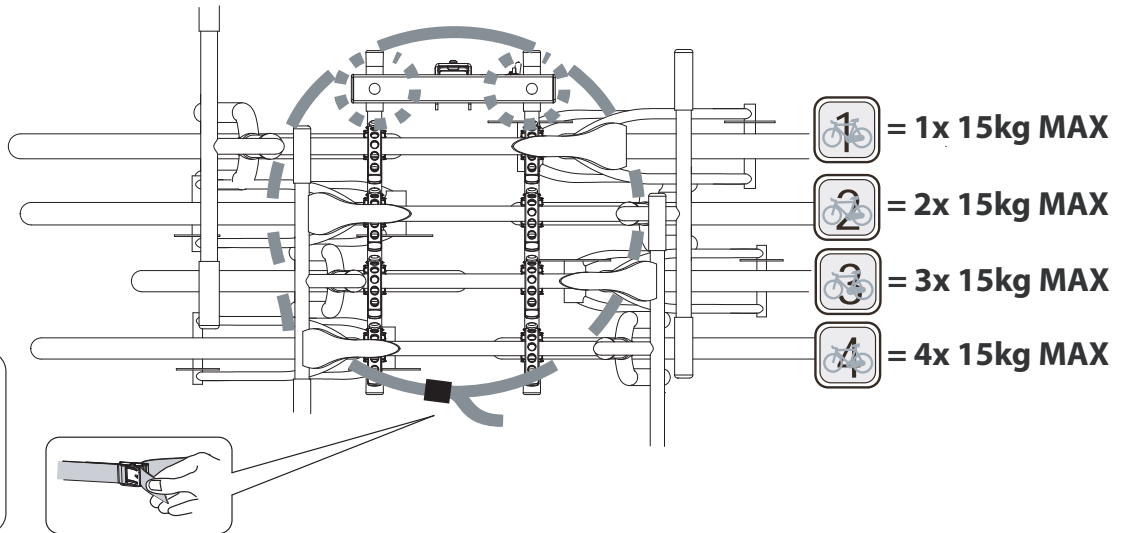
7





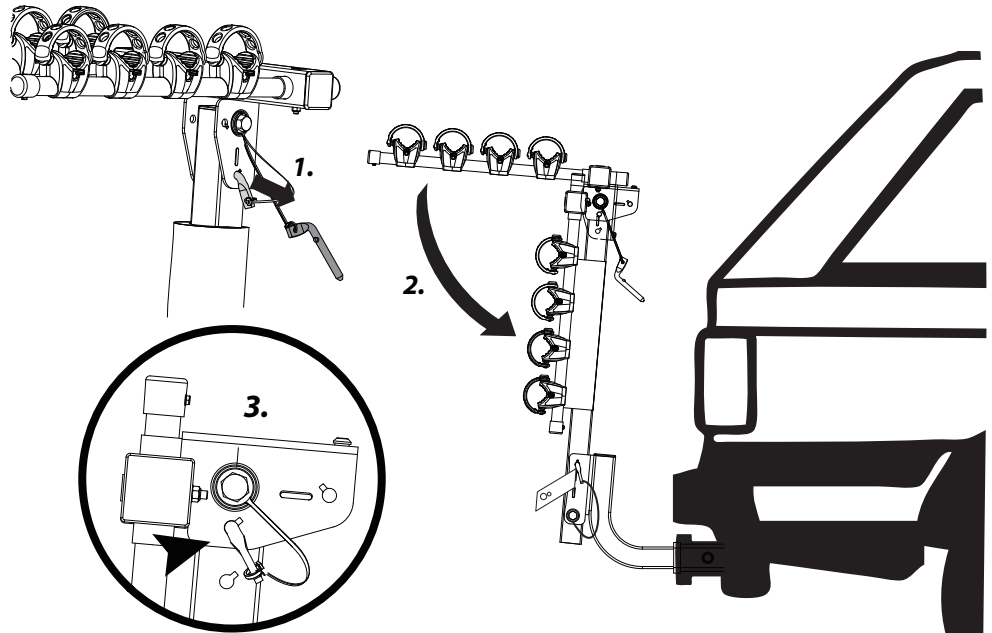
# Rhino-Rack 2" Hitch Receiver Bike Carrier (4 Bikes)

8



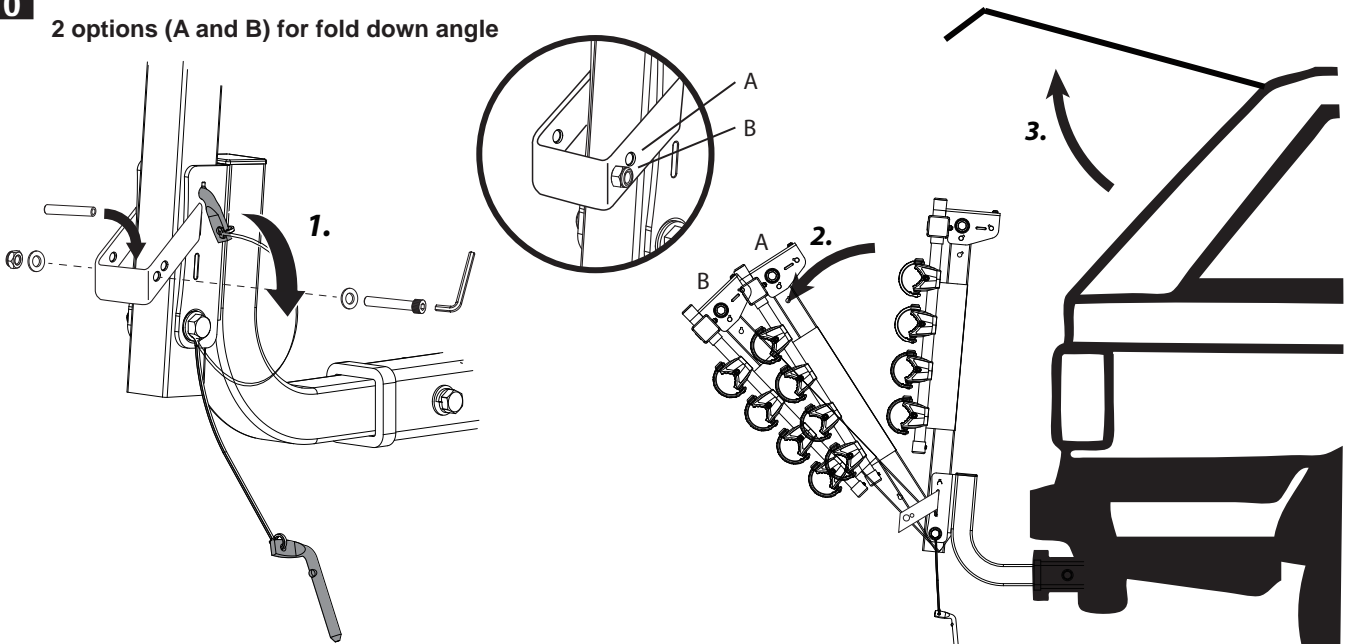
9

Don't forget to lock carrier as shown when not in use



10

2 options (A and B) for fold down angle





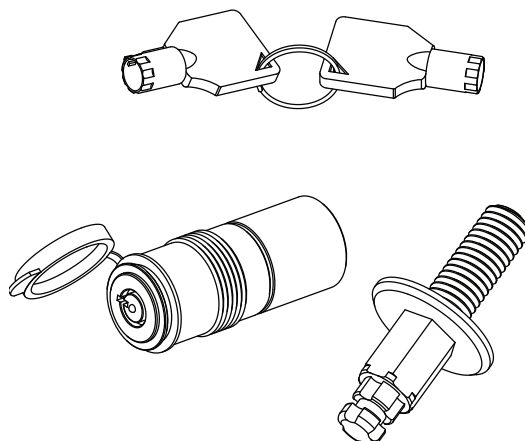
# RHINO-RACK

Aerodynamic & Heavy Duty Roof Rack Systems

## Rhino-Rack 2" Hitch Receiver Locking Pin

**Important:** Please read these instructions carefully prior to installation. Please refer to your fitting instruction to ensure that the bike rack is installed in the correct locations. Check the contents of kit before commencing fitment and report any discrepancies. Place these instructions in the vehicle's glove box after installation is complete.

### Layout



Only for use with Rhino Rack  
2" Hitch accessories.

### Important Information

Please refer to your vehicle manufacturers handbook for maximum towing capacity. Always use the lower of the two figures.

**Warning:** Do not attempt to fit the locking pin to your vehicle unless you fully understand this fitting instructions. Please direct any questions regarding fitting to the dealer from where the locking pin was purchased.

#### Recommendations:

It is essential that all bolt connections be checked after driving a short distance when you first install your locking pin. Bolt connections should be checked again at regular intervals (once a week is enough, depending on road conditions, usage, loads and distances travelled). You should also check the locking pin each time it is re-fitted. Always make sure to fasten your load securely. Please also ensure that all loads are evenly distributed and that the centre of gravity is kept as low as possible.

**Caution:** The handling characteristics of the vehicle changes when you transport a load on the roof or at the rear. For safety reasons we recommend you exercise extreme care when transporting wind-resistant loads. Special consideration must be taken into account when cornering and braking.

#### Note for Dealers and Fitters

It is your responsibility to ensure this fitting instruction is given to the end user or client

Rhino-Rack  
3 Pike Street, Rydalmere,  
NSW 2116, Australia.  
(Ph) (02) 9638 4744  
(Fax) (02) 9638 4822

Document No: R109  
Prepared By: Scott Murray  
Authorised By: Chris Murty

Issue No: 01  
Issue Date: 07/07/2011

These instructions remain the property of Rhino-Rack Australia Pty Ltd and may not be used or changed for any other purpose than intended.



# Rhino-Rack 2" Hitch Receiver Locking Pin

## Parts List

| Item | Component Name       | Qty |
|------|----------------------|-----|
| 1    | Lock Barrell         | 1   |
| 2    | Locking Thread       | 1   |
| 3    | Key                  | 2   |
| 4    | Fitting Instructions | 1   |

**Tools Required:**  
15mm Spanner

