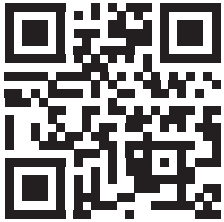



VEHICLE				PIONEER	CONNECTOR	HEIGHT ADDED (mm/in)		
SUBARU Forester SK Gen 5 4WD/SUV Raised Rail 5 dr				52100	RX100	145 / 5.7		
VEHICLE NOTES	Vehicle manufacturer builds vehicle with different roof mounted rails. Refer to the vehicle owners manual for the maximum roof load limit of your vehicle. - Do not operate sunroof							
REGION	AUS	NZ	USA	CA	SA	UK	EU	ZA
AVAILABILITY	✓	✓	✓	✓	✓	✓	✓	✓
RUNNING DATES	2018 -	2018 -	2019 -	2019 -	2019 -	2019 -	2019 -	2019 -


VISIT THE ONLINE CALCULATOR FOR CURRENT SYSTEM LOAD LIMIT DATA




**DYNAMIC LOAD LIMIT (ON AND OFF-ROAD):**  
 \*USE THE VEHICLE MANUFACTURER'S MAXIMUM ROOF ALLOWANCE IF IT IS LOWER THAN THE FIGURE LISTED

  
 CARGO  
 UP TO **81 Kg**  
**178 lbs**


+


  
 SYSTEM WEIGHT  
 UP TO **19 Kg**  
**42 lbs**

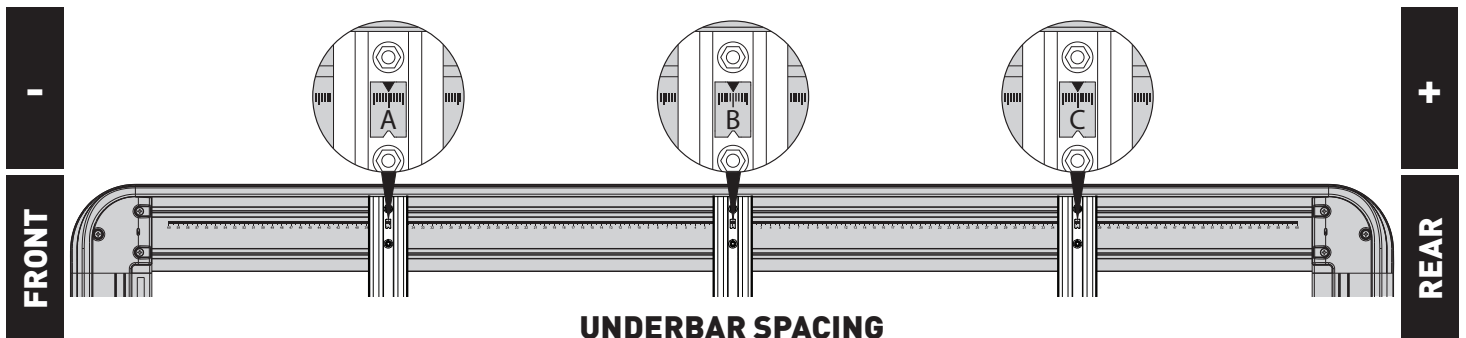
=

  
 LOAD LIMIT  
 UP TO **100 Kg**  
**220 lbs**

OR

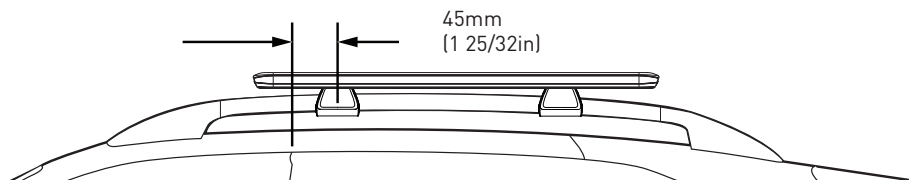
  
 Max kg  
 \*VEHICLE MANUFACTURER'S ROOF LOAD LIMIT


**TOTAL STATIC LOAD LIMIT: UP TO 250 Kg / 551 lbs\***

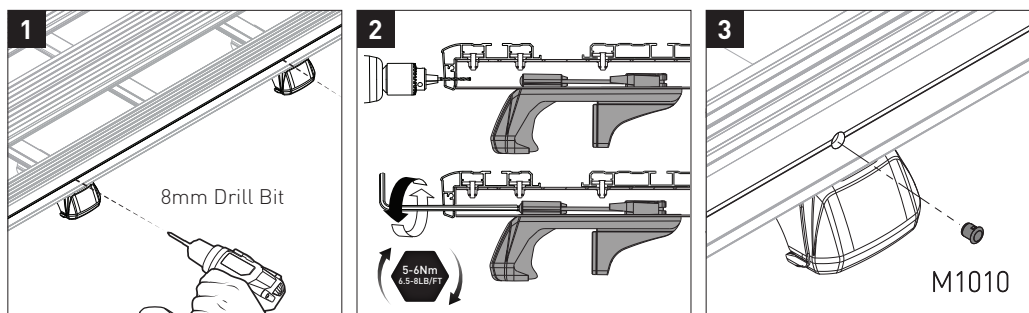


**UNDERBAR SPACING**

BAR NO.	A	B	C	D	E	F	G
DIMENSION (CM)	-40	0	40				
SPACERS REQ'D							
CONNECTOR	RX		RX				



\*ONLY IF 5-6N/m CANNOT BE OBTAINED



**NOTES FOR DEALERS / FITTERS**

It is your responsibility to ensure these fitting instructions are given to the end user or client.

Document No: R3152  
 Issue No: 1  
 Issue Date: 07-Feb-23