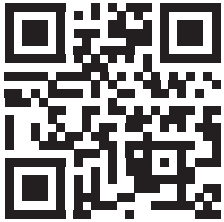



VEHICLE				PIONEER	CONNECTOR	HEIGHT ADDED (mm/in)		
LDV T60 Pickup/Ute Raised Rail 4 dr				52110	RX100	108 / 4.3		
VEHICLE NOTES	-							
REGION	AUS	NZ	USA	CA	SA	UK	EU	ZA
AVAILABILITY	✓	✓	x	x	x	✓	x	x
RUNNING DATES	2017 -	2017 -	-	-	-	2018 -	-	-


VISIT THE ONLINE CALCULATOR FOR CURRENT SYSTEM LOAD LIMIT DATA




DYNAMIC LOAD LIMIT (ON AND OFF-ROAD):
 *USE THE VEHICLE MANUFACTURER'S MAXIMUM ROOF ALLOWANCE IF IT IS LOWER THAN THE FIGURE LISTED


 CARGO
 UP TO **79 Kg**
174 lbs


+



 SYSTEM WEIGHT
 UP TO **21 Kg**
46 lbs

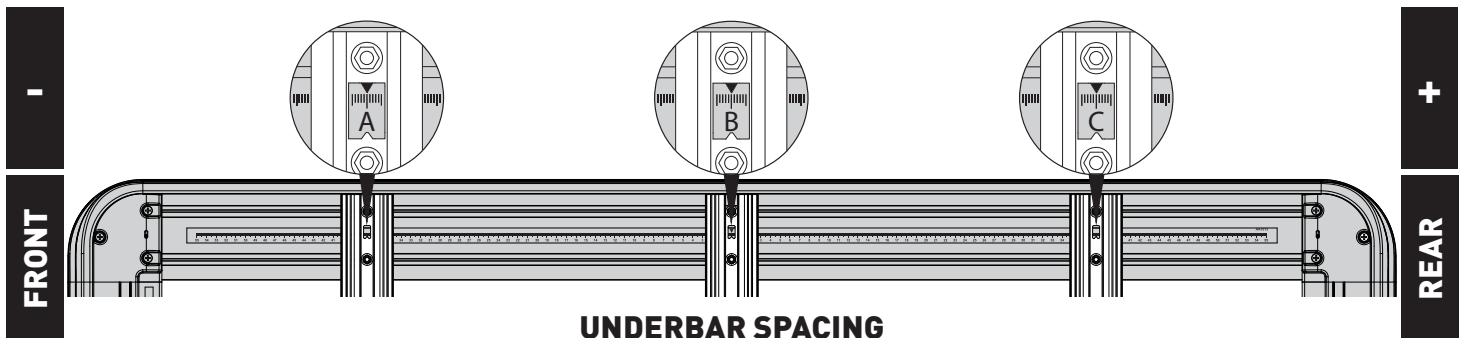
=


 LOAD LIMIT
 UP TO **100 Kg**
220 lbs

OR

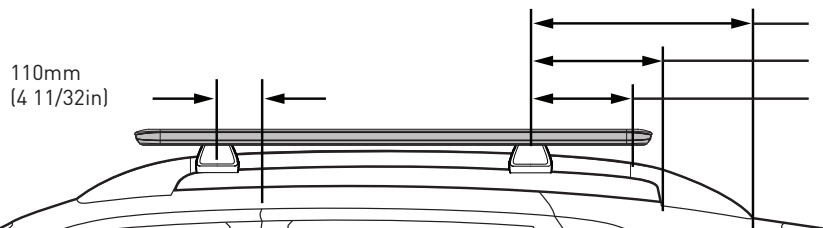

 Max kg
 *VEHICLE MANUFACTURER'S ROOF LOAD LIMIT


TOTAL STATIC LOAD LIMIT: UP TO 250 Kg / 551 lbs*

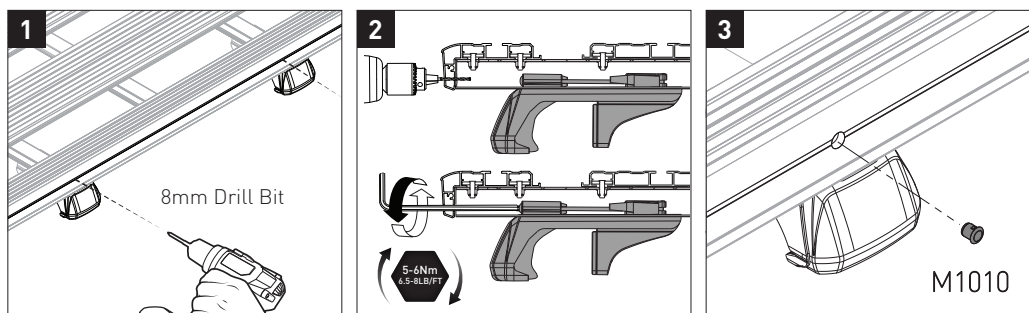


UNDERBAR SPACING

BAR NO.	A	B	C	D	E	F	G
DIMENSION (CM)	-35.3	0	30.2				
SPACERS REQ'D							
CONNECTOR	RX		RX				



*ONLY IF 5-6N/m CANNOT BE OBTAINED



NOTES FOR DEALERS / FITTERS

It is your responsibility to ensure these fitting instructions are given to the end user or client.

Document No: R3150
 Issue No: 1
 Issue Date: 07-Feb-23