


| VEHICLE | PIONEER | | | CONNECTOR | | | HEIGHT ADDED (mm/in) | |
|--|--------------------------|----|--------|-----------|--------|----|----------------------|----|
| VOLKSWAGEN Taos Gen 1 4WD/SUV Raised Rail 5 dr | 52109 | | | SX022 | | | 90 / 3.5 | |
| VEHICLE NOTES | - Do not operate sunroof | | | | | | | |
| REGION | AUS | NZ | USA | CA | SA | UK | EU | ZA |
| AVAILABILITY | x | x | ✓ | ✓ | ✓ | x | x | x |
| RUNNING DATES | - | - | 2022 - | 2022 - | 2022 - | - | - | - |


VISIT THE ONLINE CALCULATOR FOR CURRENT SYSTEM LOAD LIMIT DATA




DYNAMIC LOAD LIMIT (ON AND OFF-ROAD):
 *USE THE VEHICLE MANUFACTURER'S MAXIMUM ROOF ALLOWANCE IF IT IS LOWER THAN THE FIGURE LISTED


 CARGO
 UP TO **57 Kg**
126 lbs


+



 SYSTEM WEIGHT
23 Kg
51 lbs

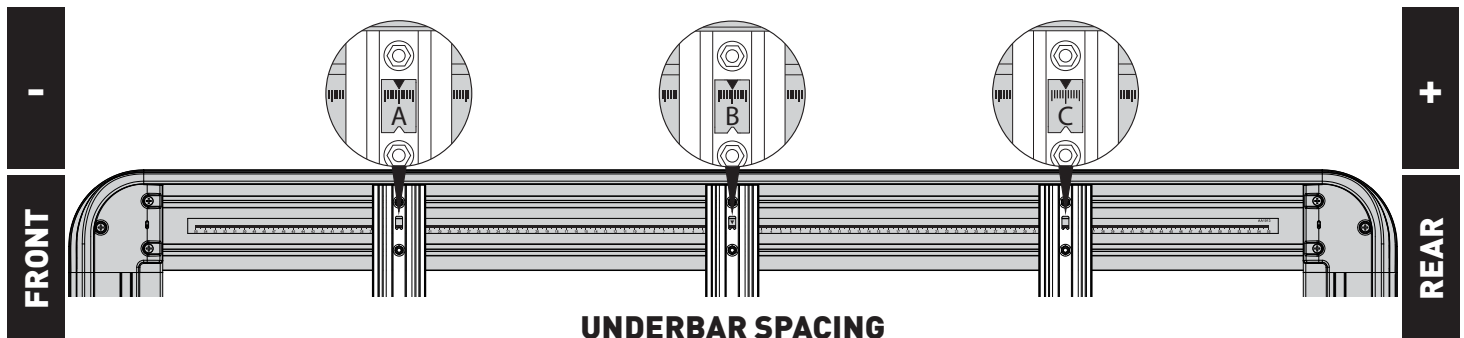
=


 LOAD LIMIT
 UP TO **80 Kg**
176 lbs

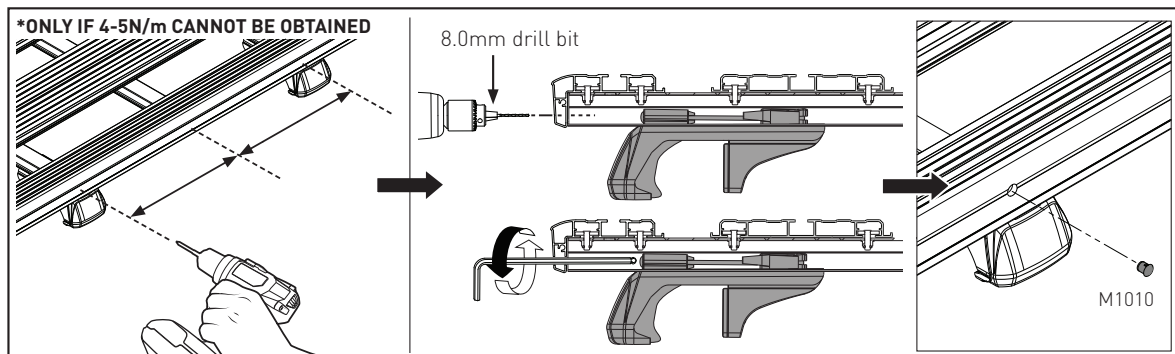
OR


 Max kg
***VEHICLE MANUFACTURER'S ROOF LOAD LIMIT**


TOTAL STATIC LOAD LIMIT: UP TO 200 Kg / 441 lbs*



| BAR NO. | A | B | C | D | E | F | G |
|----------------|-------|---|-------|---|---|---|---|
| DIMENSION (CM) | -40 | 0 | 40 | | | | |
| SPACERS REQ'D | | | | | | | |
| CONNECTOR | SX022 | | SX022 | | | | |



NOTES FOR DEALERS / FITTERS

It is your responsibility to ensure these fitting instructions are given to the end user or client.

Document No: R2943
 Issue No: 1
 Issue Date: 24-Aug-21