



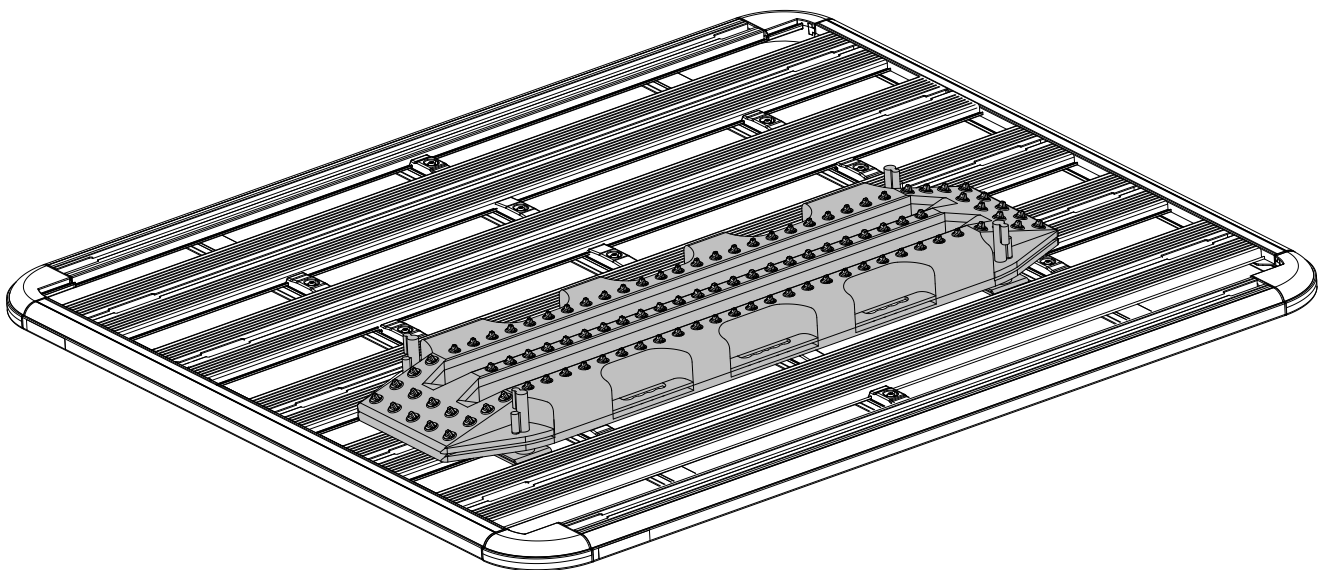
RHINO-RACK

Maxtrax Pioneer Flat Bracket (43158)

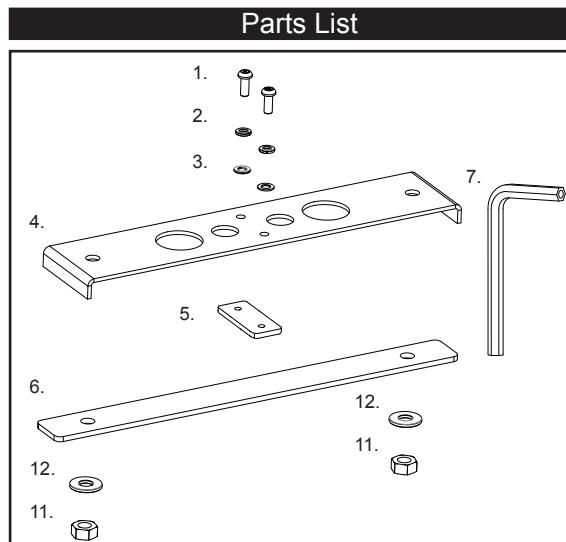
To be used in conjunction with MaxTrax Mounting Pin Set. MTXMPS

Important: Please read these instructions carefully prior to installation. Please refer to your fitting instruction to ensure that the bracket is installed in the correct locations. Check the contents of kit before commencing fitment and report any discrepancies. Place these instructions in the vehicle's glove box after installation is complete.

Layout



Item	Component Name	Qty.	Part No.
1	M6 x 16 Security Bolt	4	B061
2	M6 Spring Washer	4	W004
3	M6 Flat Washer	4	W003
4	Top bracket	2	CA1369
5	M6 Nut Plate	2	C593
6	Bottom bracket	2	CA1370
7	5mm Security Allen Key	1	H021
8	Mounting Pins (Not Included)	4	-
9	M10 Flat Washer (Not Included)	4	-
10	M10 Nyloc Nut (Not Included)	4	-
11	M10 Nyloc Nut	4	N010
12	M10 Flat Washer	4	W005
13	Fitting instruction	1	R582



Mounting Pin Set

Not Included:

8.

9.

10.

Parts Required

Maxtrax
Mounting pin set
Socket head wrench

Recommendations:

Clean product prior to fitting the Maxtrax Pioneer Bracket. The recommended maximum number of Maxtrax fitted on a set of bracket is four.

Note for Dealers and Fitters:

It is your responsibility to ensure instructions are given to the end user or client.

Rhino-Rack
3 Pike Street, Rydalmere,
NSW 2116, Australia.
(Ph) (02) 9638 4744
(Fax) (02) 9638 4822

Document No: R582
Prepared By: Peter Luu
Authorised By: Chris Murty

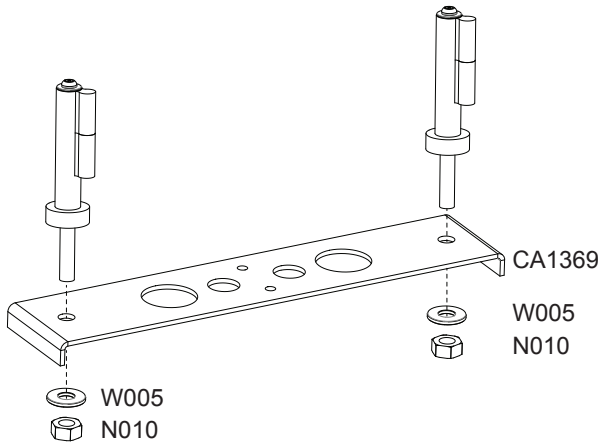
Issue No: 02
Issue Date: 11/05/15

These instructions remain the property of RhinoRack Australia Pty. Ltd. and may not be used or changed for any other purpose than intended.

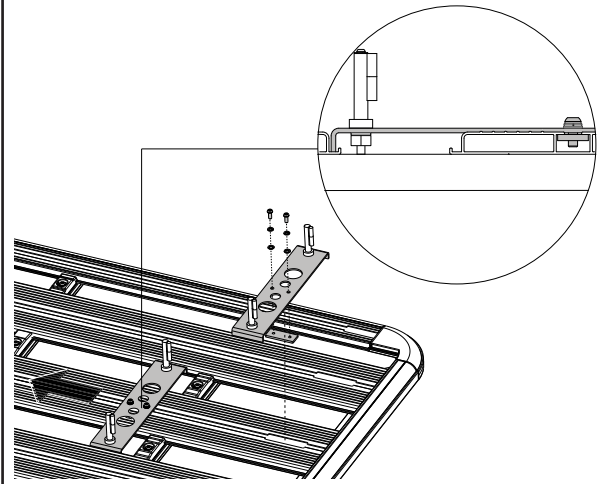


Maxtrax Pioneer Flat Bracket (43158)

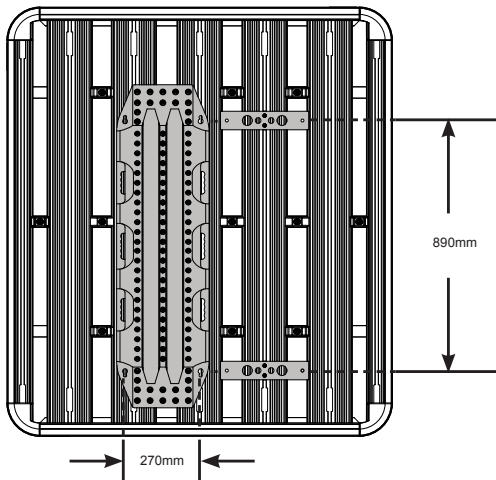
1 Assemble Maxtrax Pin Set to CA1369 Top Bracket.



2 Assemble the top bracket so that it sits on the rails as shown. Do the same for the other top bracket.

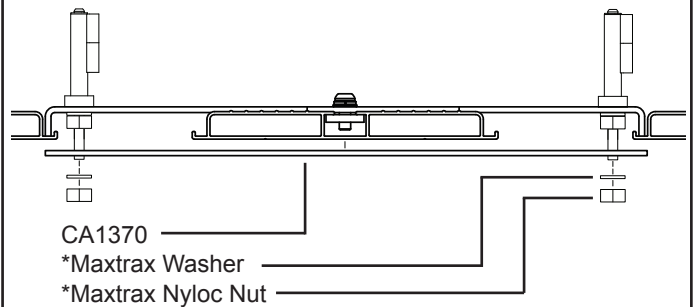


3 Adjust so the brackets are 890mm apart from the holes or place a Maxtrax next to the brackets and use it to align the brackets. Tighten with allen key.



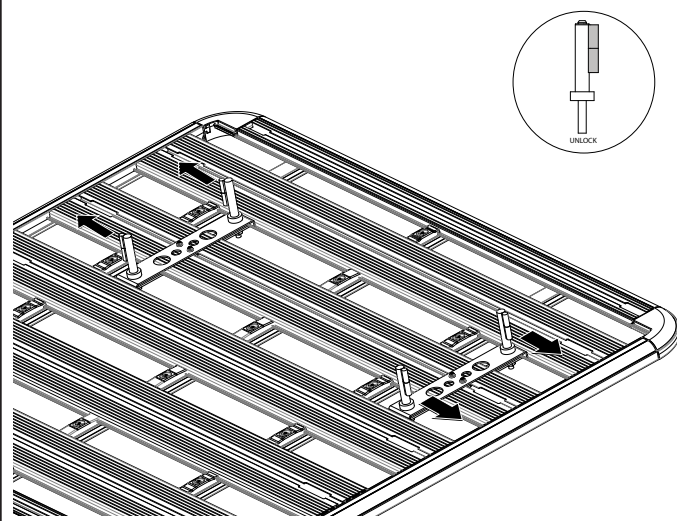
4 Attach the Bottom Bracket (CA1370) to the top Assembly and shown. Finger tighten.

Side View:



Note: Maxtrax hardware found in MTXMPS kit.

5 Make sure that the pins are unlocked and facing outwards.



6 Place the maxtrax through the mounting pins, onto the brackets. Make some adjustments if required. Tighten the nuts with a wrench and lock the mounting pins.

