

CONTROLLED



RHINO-RACK

Rhino-Rack Slumber Chair with Foot Rest (34001)



Maximum load capacity : 136kg/300lbs

Rhino-Rack

3 Pike Street, Rydalmere,
NSW 2116, Australia.
(Ph) (02) 9638 4744
(Fax) (02) 9638 4822

Issue No: R500
Prepared By: Kayle Everett
Authorised By: Chris Murty

Issue No: 02
Date: 26/02/2015

These instructions remain the property of Rhino-Rack Australia Pty Ltd and may not be used or changed for any other purpose than intended.

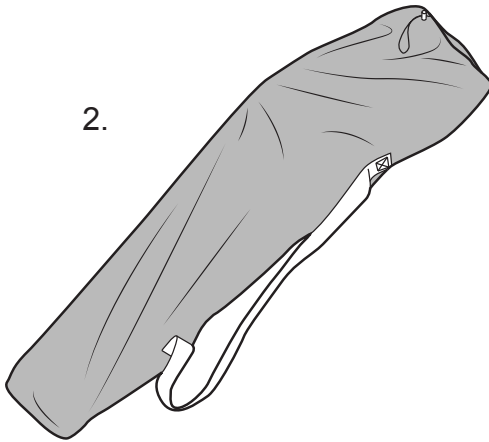


Rhino-Rack Slumber Chair with Foot Rest (34001)

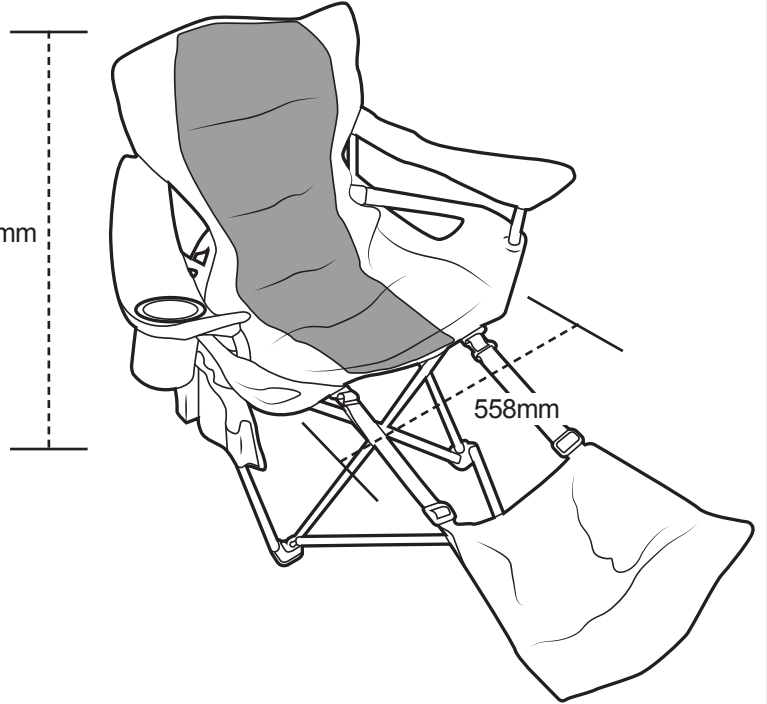
Parts List

Item	Component Name	Qty	Part No.
1	Slumber Chair	1	
2	Camping Chair Bag	1	
3	Fitting Instruction	1	R500

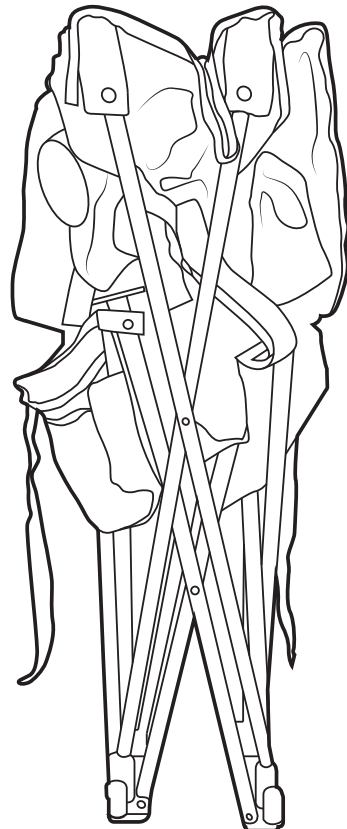
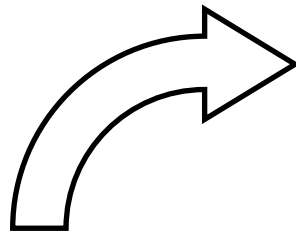
**MAX weight:
136kg/300lbs**



940mm



1



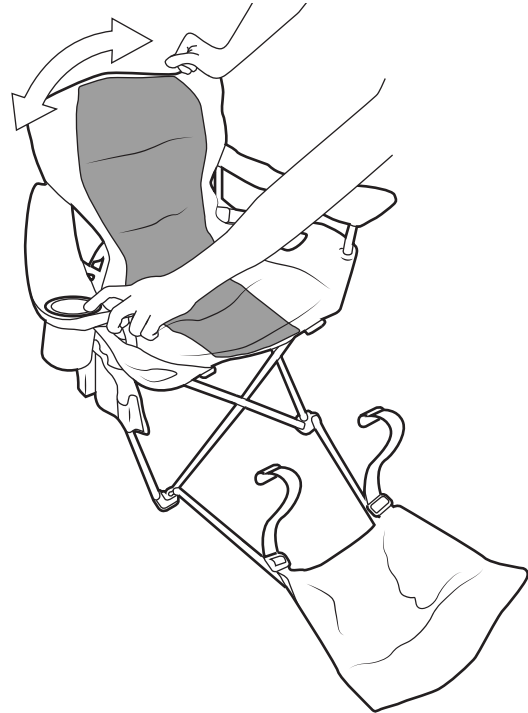


Rhino-Rack Slumber Chair with Foot Rest (34001)

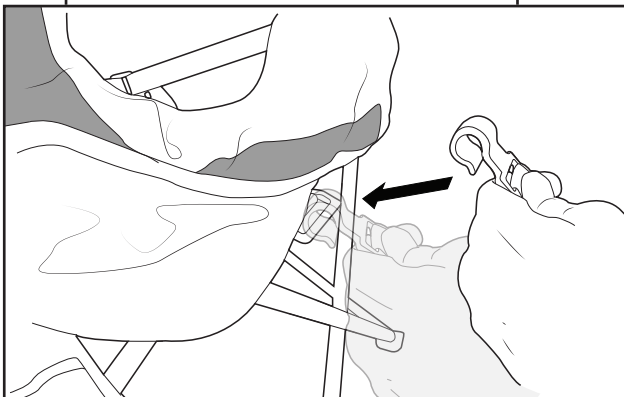
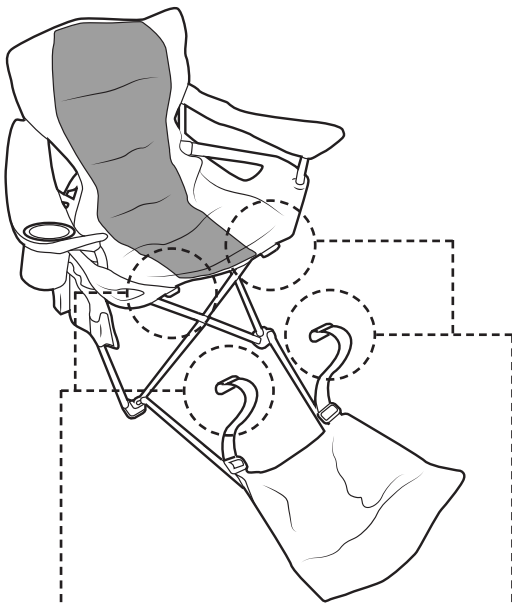
2 Hold two opposing legs on the front and back of the chair.



3 Push the opposing legs away from one another as shown.

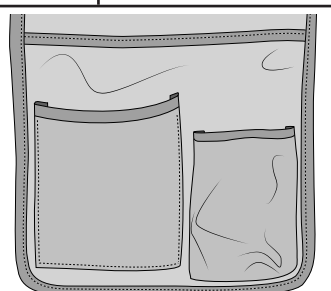
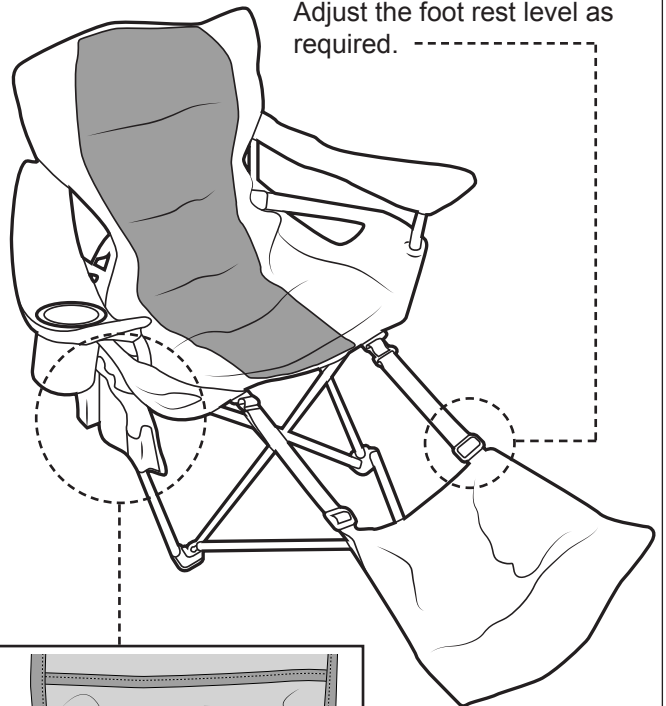


4 Attach the foot rest clips to the chair.



5

Adjust the foot rest level as required.



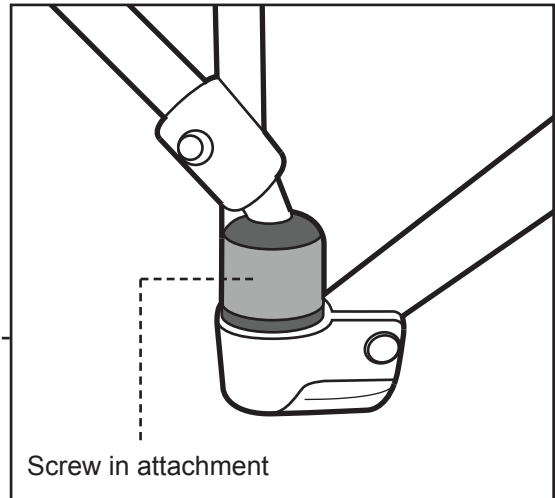
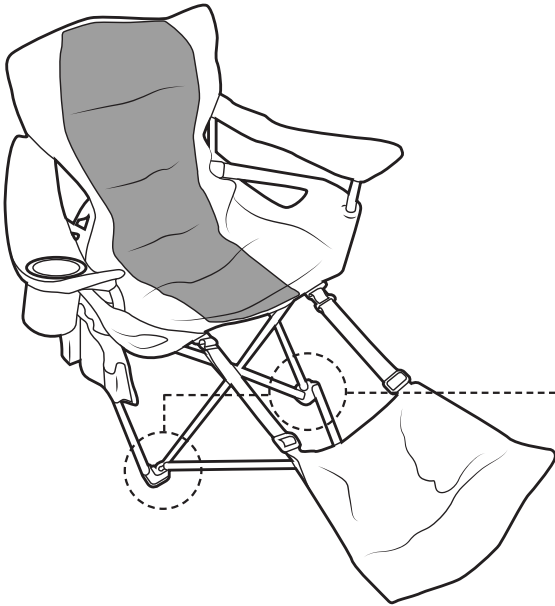
Storage pouches can be found on the right side of the chair.



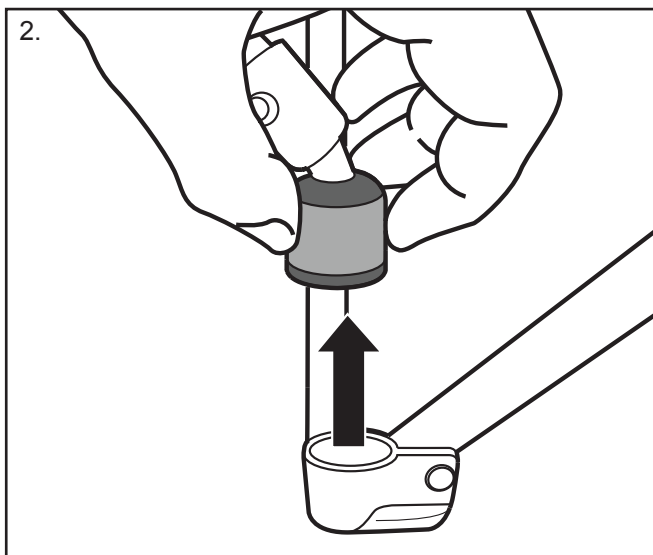
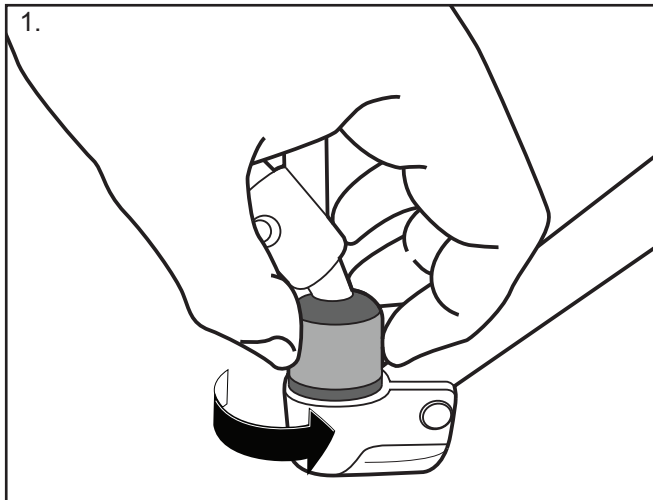
Rhino-Rack Slumber Chair with Foot Rest (34001)

Removing the Foot Rest

- 6** Move the front legs of the chair. Locate the screw in foot rest attachments.



- 7** Unscrew the foot rest attachment and remove from both front legs of the chair.



- 8** Detach the foot rest clips and remove the foot rest.

