



RHINO-RACK

RJTB1 – JEEP GLADIATOR JT 4DR 2 BASE BACKBONE





Introduction

The Rhino-Rack Backbone is a custom vehicle specific designed interior and exterior structure for the Jeep JT Gladiator Pickup Truck. The 2 mounting plates on each side of the fiberglass roof are connected to the interior frame and vehicles roll cage. Utilizing the interior structure, we have been able to allow for a maximum load rating of up to 220lb or 100kg on the roof.

Features

- On roof installation, no canopy removal required.
- Single person installation.
- No measuring required.
- Specifically designed to be used with the Jeep JT Gladiator Pick Up truck.
- Stylish and low profile design.
- Made from strong and durable materials allowing for maximum carrying capacity.
- Black powder coating for increased corrosion resistance.
- Suits Pioneer Platform 52121/42121BF along with Vortex and Heavy Duty Cross Bars.
- 2-hour installation time.
- 5 year warranty.



Platform & Crossbar Compatibility

MOUNTING SYSTEM	LEGS	CROSSBARS/ PLATFORM
RJTB1	RCL4	VA150B VA150S
	RLT600	VA150B VA150S
	RCL4	RB1500B RB1500S
	RLT600	RB1500B RB1500S
	RCL4	52121 42121BF
	RLT600	52121 42121BF


Packaging (Shipping) Specifications

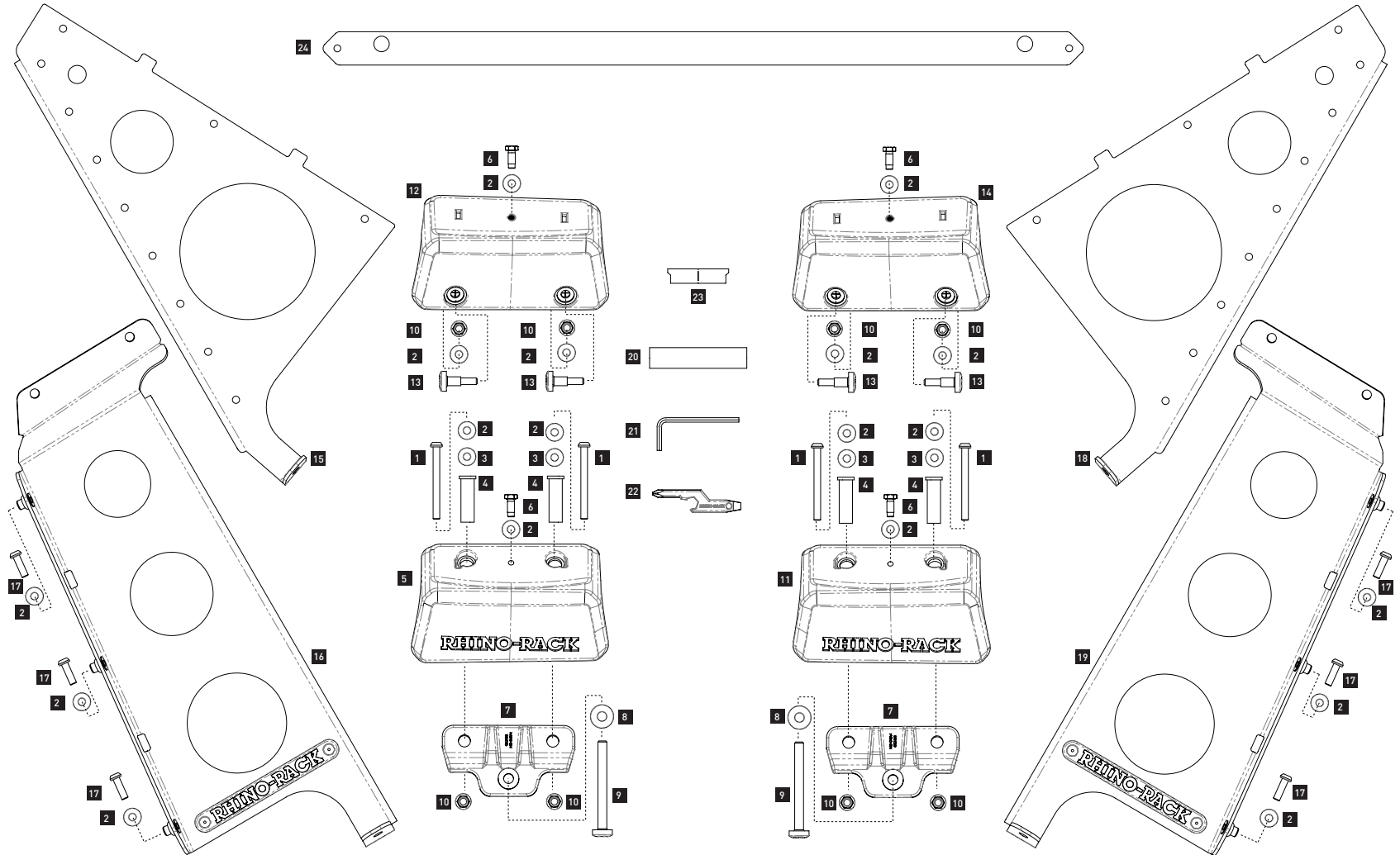
	EACH
L x W x H	870 x 365 x 125mm
	34.3" x 14.4" x 4.9"
Gross Weight - KG	8.22kg / 18.12lbs
Net Weight - KG	8.06kg / 17.77lbs
ADDITIONAL SPECIFICATIONS	
Part#	RJTB1
Barcode (EAN-13)	9321911293512
HS Code	87089999

RHINO-RACK
BACKBONE
 JEEP GLADIATOR JT



FITTING
 INSTRUCTIONS

Not available for individual sale.
 Individual items not available to order.



What's In The Box

To ensure all components are packaged prior to installation, we recommend fit checking all items on our provided shadowboard.

- | | | | |
|-------------------------------|--------------------------------------|------------------------------|-------------------------|
| 1 M6 x 65mm button head screw | 7 Rollbar casting | 13 M6 torx T50 shoulder bolt | 19 Front right upright |
| 2 M6 x 16mm flat washer | 8 M8 x 20mm flat washer | 14 Rear Right Casting | 20 12.5mm drill stop |
| 3 M6 rubber washer | 9 M8 x 80 torx T50 button head screw | 15 Rear left upright | 21 4mm allen key |
| 4 Spacer bushing | 10 M6 flanged nut | 16 Front left upright | 22 Spacer multi-tool |
| 5 Front left casting | 11 Front right casting | 17 M6 x 20mm dome head | 23 Rear casting spacer |
| 6 M6 x 16mm hex screw | 12 Rear left casting | 18 Rear right upright | 24 Front casting spacer |